

DSX Series

ULTRA COMPACT AND LIGHT WEIGHT POWER AMPLIFIER

56 BIT DSP ENGINE

DATA SHEET

pag.1/2 V.11.08

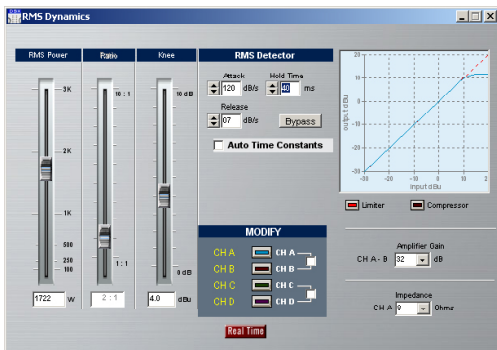
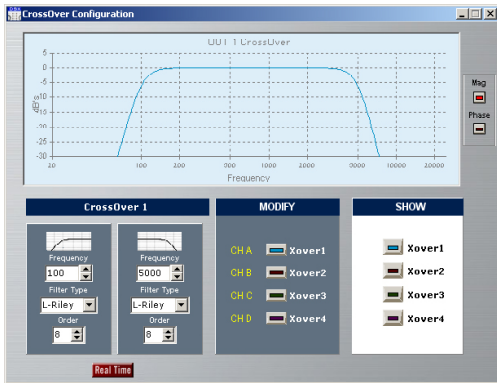
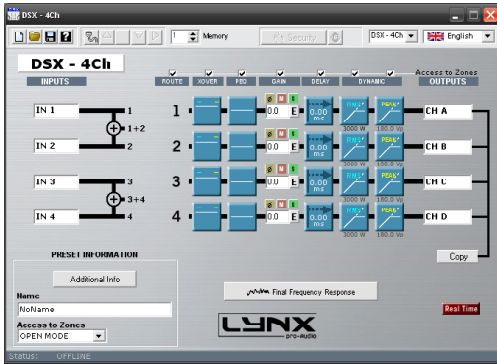


	DSX-1004	DSX-4002	DSX-2800	DSX-2200	DSX-1600	DSX-1200	DSX-6002	DSX-1504
<i>RMS power (8Ω):</i> _____	4 x 690 W	4 x 430 W	2 x 810 W	2 x 630 W	2 x 460 W	2 x 325 W	4 x 620 W	4 x 1015 W
<i>RMS power(4Ω):</i> _____	4 x 975 W	4 x 670 W	2 x 1380 W	2 x 1100 W	2 x 790 W	2 x 575 W	4 x 1000 W	4 x 1480 W
<i>RMS power (2Ω):</i> _____	--	4 x 980 W	2 x 1950 W	2 x 1570 W	2 x 1190 W	2 x 880 W	4 x 1440 W	--
<i>Bridge (8Ω):</i> _____	2 x 1950 W	2 x 1340 W	2760 W	2200 W	1580 W	1150 W	2 x 2000 W	2 x 2960 W
<i>Bridge (4Ω):</i> _____	--	2 x 1960 W	3900 W	3140 W	2380 W	1760 W	2 x 2880 W	--
<i>Pink noise Crest factor</i>								
<i>@ 4 ohm</i> _____	4 x 1230 W	4 x 820 W	2 x 1600 W	2 x 1240 W	2 x 880 W	2 x 610 W	4 x 1280 W	4 x 2110 W
<i>@ 2 ohm</i> _____	--	4 x 1170 W	2 x 2460 W	2 x 2060 W	2 x 1360 W	2 x 975 W	4 x 2080 W	--
<i>THD:</i> _____	0'05 %	0'05 %	0'05 %	0'05 %	0'05 %	0'05 %	0'05 %	0'05 %
<i>Sensitivity (8 Ω)</i> _____	3.7/1.9/0.9 V	3.0/1.5/0.8 V	4.0/2.0/1.0 V	3.6/1.8/0.9 V	3.0/1.5/0.8 V	2.6/1.3/0.6 V	3.5/1.8/0.9 V	5.0/2.5/1.3 V
<i>Signal-to-noise-ratio:</i> _____	116 dB	113 dB	116 dB	115 dB	113 dB	112 dB	116 dB	118 dB
<i>Gain:</i> _____	26-32-38 dB	26-32-38 dB	26-32-38 dB	26-32-38 dB	26-32-38 dB	26-32-38 dB	26-32-38 dB	26-32-38 dB
<i>Frequency response (-0'5dB):</i>	20/20K Hz	20/20K Hz	20/20K Hz	20/20K Hz	20/20K Hz	20/20K Hz	20/20K Hz	20/20K Hz
<i>Phase Response @1w:</i> _____	± 15dB	± 15dB	± 15dB	± 15dB	± 15dB	± 15dB	± 15dB	± 15dB
<i>Damping factor:</i> _____	>500/20-500Hz	>500/20-500Hz	>500/20-500Hz	>500/20-500Hz	>500/20-500Hz	>500/20-500Hz	>500/20-500Hz	>500/20-500Hz
<i>Crosstalk:</i> _____	>75 dB	>75 dB	>75 dB	>75 dB	>75 dB	>75 dB	>75 dB	>75 dB
<i>Required mains :</i> _____	230V / 50Hz	230V / 50Hz	230V / 50Hz	230V / 50Hz	230V / 50Hz	230V / 50Hz	230V / 50Hz	230V / 50Hz
<i>Dimensions W x H x T (mm):</i>	483 x 89 x 310	483 x 89 x 310	483 x 89 x 310	483 x 89 x 310	483 x 89 x 310	483 x 89 x 310	483 x 89 x 310	483 x 89 x 310
<i>Weight :</i> _____	8.5 Kg	8.5 Kg	8.5 Kg	8.5 Kg	8 Kg	8 Kg	8.6 Kg	8.6 Kg

DSX Series

DATA SHEET

pag.1/2 V.11.08



- Powerful: up to 6000 W
- Maximum reliability
- DSP integrated
- Light weight: no more than 9 kg
- Superior sound quality
- Fully programmable

Input 2 or 4
 Impedance: 20 K Ohm Balanced (10 K Ohm unbalanced).
 Connector: Balanced XLR (pin 2 +).
 AD converter: 24 bit-192KHz, 512x Oversampling.
 Dynamic Range: 120 dB.
 Max. level: +19 dBu (balanced).

RMS Limiter-Compressor 1 per output.
 Threshold: 1W to 3000W
 Compression Ratio: 1:1 to 1:10 (1:infinite with limiter).
 Power indication Shows the maximum power applied to the speaker for the selected threshold.

Outputs 4, 6 or 8
 Impedance: 50 Ohm Balanced (25 Ohm unbalanced).
 Connector: Balanced XLR (pin 2 +).
 DA converter: 24 bit-192KHz, 512x Oversampling.
 Dynamic Range: 120 dB.
 Max. level: +18 dBu (balanced).

Level Control
 Gain +6dBu to -40 dBu per input / output.
 Mute per input / output.
 Phase inversion per input / output.
 Possibility to Link Controls.

Audio
 Frequency Range 10 Hz – 24 KHz.
 THD (%) <0,0018%.
 DSP Process Internal resolution with 56 bit double precision in floating point.
 Converts 24 bit resolution.
 Propagation Delay: 0.5 milliseconds.

Security Options
 Password global.
 Level 0: No restrictions.
 Level 1: Only allows preset to changes.
 Level 2: Only allows mute modification.
 Restricted Zones: For each Preset it is possible to disable the access to any processor function (EQ, crossover, Limiter, etc) writing a preset password.

Equalisation
 PEQ output 9 per way.
 PEQ Type filters Parametric, Shelving High, Shelving Low, Low-Pass, High-Pass, Low-Pass Q variable, High-Pass Q variable, BandPass, Reject Band, AllPass order 1, AllPass order 2.
 Possibility to Link filters between Input and Outputs.

Other functions
 Speaker data import from main audio measurement systems.
 Export & Import EQ files.
 Etc.

Crossover Linkwitz Riley with 12, 24, 48 dB/oct.
 Butterworth and Bessel with 6, 12, 18, 24, 30, 36, 42 and 48 dB/oct.

Front Panel
 Display: LCD with 24 x 2 characters.
 Encoders: 1 with push button.
 Led indicator: 1 led for Limit (per channel)

Delay
 Output 20.8 milise for Speaker alignment.

Communication
 USB