



PRODUCT CATALOGUE

Latest edition

Proudly designed, engineered and
manufactured in SPAIN





LYNX
pro-audio

CULTURE OF SOUND



TABLE OF CONTENTS

About Lynx Pro Audio	04	GXR-D18A		BS Series	66
Our technology	08	GXR-215		BS-8	
Professional Sound Systems	10	GXR-15		BS-10	
LX Series	12	GXR-12		BS-12	
LX-V12		GXR-18S		BS-15	
LX-318C		HR Series	46	BS-112	
CLS Series	16	Marine Grade Option	47	BS-118	
CLS-28		HR-6		DS Series	76
CLS-118S		HR-8		DS-12	
CLS-121S		HR-1564/7 & HR-1596/7		DS-18S	
CLS-212		HR-1264/7 & HR-1296/7		QB Series	80
CLS-218S		HR-1564/5 & HR-1596/5		QB-5	
CXA Series	22	HR-1264/5 & HR-1296/5		SUB-08	
CXA-12		HR-28		Juno Series	83
CXA-18S		HR-26		JN-6/JN-6T	
ADP Series	26	HR-218/36		JN-8/JN-8T	
ADP-215		HR-218/12		CS Series	85
ADP-15		HR-215		CS-6T	
ADP-12		HR-18/6		CS-8SUB	
ADP-26		IONIC Series	59	IXP Series	86
ADP-212M		Ionic 50		IXP-4	
ADP-12M		Ionic 100		IXP-6	
ADP-18S		Ionic 5CX		IXP-8SUB	
ADP-12S		Ionic 18S		Accessories	87
GXR Series	36	Ionic 12S		ARK processors	95
GXR-LA210A				Amplifiers	100
GXR-D15A				Software	106

The technical specifications described in this catalogue can vary without previous notification.

OUR VISION

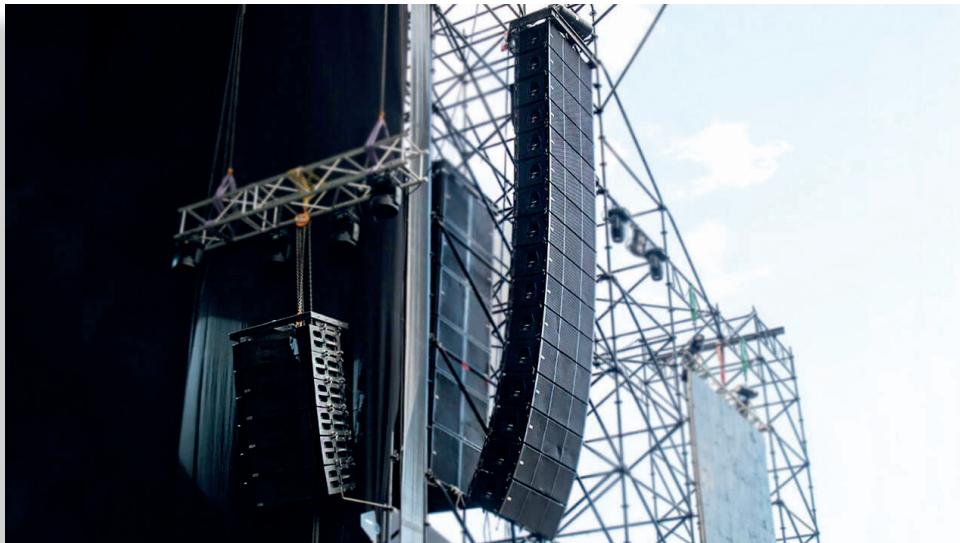
Our mission is to design some of the most advanced and innovative sound systems available on the market, only using the best tried and tested components so that our systems deliver cutting-edge sonic performance.

We are a relatively young company that has been able to quickly establish its product among the best options in the market. **We have distributors in more than 36 countries and we export about 80% of our total production.**

We fully trust in the ability of our R&D team, responsible for updating and renewing the software and technology of our products.

Our growth increases year over year, adding new product ranges and expanding our presence in the market.

We firmly believe that by using the best components and taking advantage of the latest technologies our systems will prove their excellence.



CULTURE OF SOUND

At Lynx Pro Audio we are passionate about our work and we want to demonstrate it by helping to promote the culture of sound. We believe that sound is fundamental in life. **Sound tells stories, changes our perception of the world and evokes memories.**

Nietzsche maintained that “without music, life would be a mistake”. We argue that “without sound, there would be no music”. That’s why we want to promote its importance through the #CultureOfSound

Manufacturing



Our production staff has over 30 years of experience manufacturing professional audio equipment, having a high level of specialization and the best tools to optimize their work to the maximum.

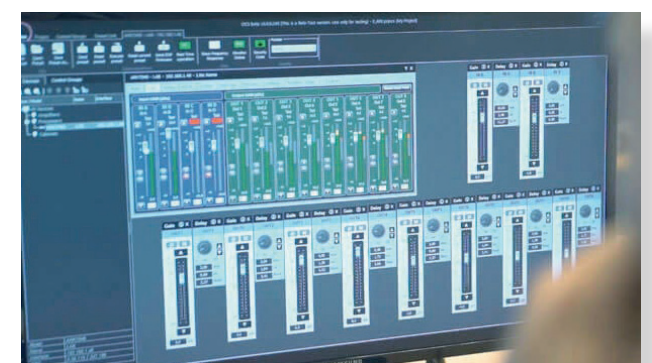
All our products are designed by our team of engineers and manufactured by highly qualified staff in our headquarters in Valencia (Spain), meeting the most demanding quality regulations.

Our enclosures are optimized in a specially conditioned anechoic room, taking 360° measurements in both horizontal and vertical planes.

In this way we ensure that the final result will be adequate when we add more elements to the system, as in the case of a line array device.

Each manufactured product is verified, measured and tested individually, ensuring optimal configuration.

At Lynx Pro Audio we are passionate about professional sound and dedicate all our resources to research and development. This allows us to offer superior systems for tours as well as installation projects.





RESEARCH & DEVELOPMENT

We like to innovate. That's the reason why every year we launch a new series of products and our engineers develop new **software** to facilitate and improve the use of existing systems.

Mastering technology is fundamental

At Lynx Pro audio we know that being at the forefront of technology and innovation is key in the professional audio industry.

For that reason we have an **R&D laboratory formed by a team of highly qualified engineers** who are in charge of developing the latest technology in sound reinforcement.

Digital Processing

We dominate DSP (Digital Signal Processor) technology to perfection, being one of the few companies in the market that develops its own digital processor.

We make our own DSP (Digital Signal Processing), using a next generation digital processor that optimizes system's components.

- DSP Analog Devices
- FIR Filters / Crossover (Linear Phase)
- Accelerometer
- Double dynamics (RMS & Peak)
- Operational ultra low noise amplifiers
- Automatic inclinometer
- 24Bit 192KHz (Cirrus Logic)
- USB / Ethernet connections
- AES / EBU digital inputs
- Gain, delay, polarity control

OUR TECHNOLOGY

These are the technological features of our cabinets that you will find on each product card:



DIGITAL PROCESSING

Latest generation 24bit/96Khz digital processor which optimizes the system components.

It includes 2 channel processing electronics with functions for phase correction, driver protection, gain control, equalization, classic crossover and linear phase filtering.



FIR POWERED

In-house engineered FIR filter algorithms allow Lynx systems to deliver outstanding sound quality and phase compatibility within all the DSP powered product range whilst maintaining very low latency.



AES / EBU

For self-powered Lynx Pro Audio cabinets that have this option, enabling digital audio input signal via AES / EBU protocol, accepting signals up to 24 bits and 192 kHz whilst with the software being able to choose if you want to use the input L, R or L + R.



POWER FACTOR CORRECTION

PFC is a measure of how efficiently the load current is being converted into a more useful output current. With PFC the power supply regulates itself when AC mains change, so the amp power output will not change with mains swinging.

This system is also very environmentally friendly with a reduction of approximately 40% of current draw. It transforms the power consumed in to "useful power" producing less hum and distortion.



NEODYMIUM

Lynx Pro Audio cabinets that use neodymium magnet group components benefit from special characteristics such as improved driver performance and of course the saving in overall system weight.



ATMOSPHERIC

Air absorption compensation is an algorithm that compensates for the loss of pressure caused by weather conditions and the distance to the listener's ear from the sound system.

By introducing three parameters (temperature, relative humidity and distance) the algorithm calculates the losses and compensates for this loss so they are not apparent in the listening zone.



DIGITAL INCLINOMETER

Automatic function to calculate cabinet splay angles. The inclinometer data can be viewed and controlled from the cabinet LCD display either manually or automatically.

The inclinometer automatically communicates with the DSP and modifies the equalization algorithms. According to the splay angle of the inclinometer the DSP compensates for atmospheric loss.

The result is a more efficient performance and a flat response, even at long distances.



IMPORT DATA

This feature of our control software allows us to add the electro-acoustic response of the system we want to adjust to our processing chain, enabling us to see the total system response and not just the electrical one.



FLOAT POINT OPERATIONS IN DOUBLE PRECISION

The DSP processing works with double precision, achieving an internal resolution of 56 bits or 64 bits, one of the largest resolutions available on the market today.



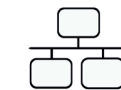
This enables the use of high precision filters with extremely low distortion delivering unbeatable sound clarity and quality.



AMPLIFICATION

The Class D amplifier is characterized by high efficiency (low loss of energy), which results in smaller heat sinks and much smaller total power consumed by reducing the weight and size of the amplifier.

Class D amplifiers achieve about 80% higher efficiency than other amplifiers, whose efficiency is approximately 45%. There are significant advantages, the lower dissipation produces less heat and saves circuit board space.



ETHERNET

This option enables you to connect various devices in a standard Ethernet network and control them remotely through our OCS 'Online Control Software'.



ONLINE CONTROL SYSTEM

OCS is a software to control each cabinet in real time (via Ethernet or pc). It obtains detailed information of the cabinet behaviour: RMS levels, Input clip, compression levels, power module temperature, air absorption compensation and cabinet angulation.



CABINET UPDATER

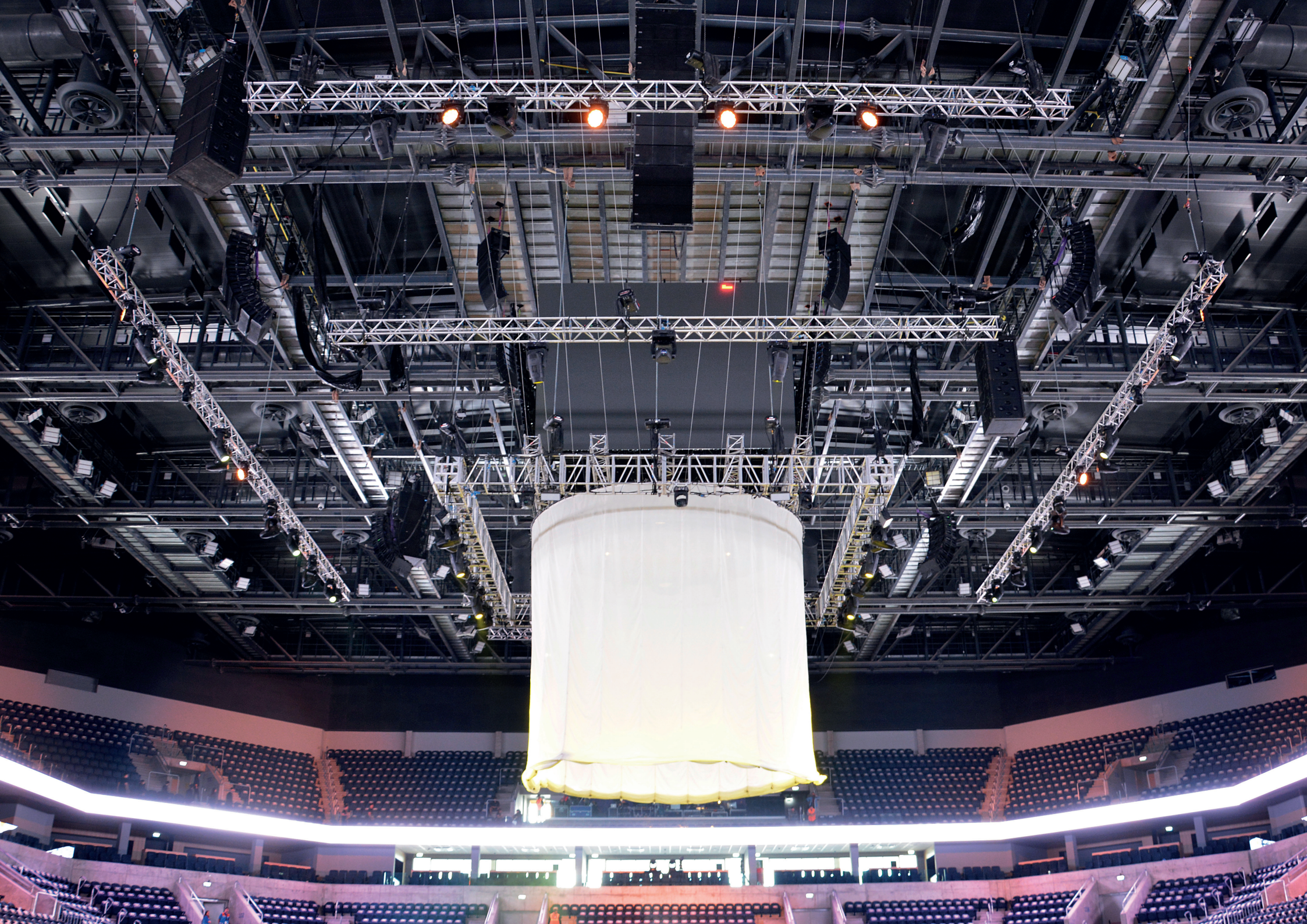
This software enables you to update your cabinets with the latest presets and firmware. Enclosures are connected via Internet to our servers and automatically detects any updates that might have been made for them. This ensures the end user always has all the improvements developed by our R & D department available for their system.



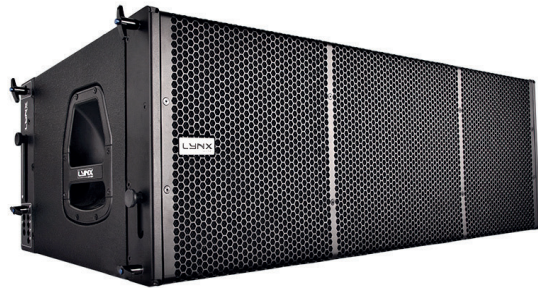
RAINBOW 3D

Based on polar response measurements, taken meticulously with a 360° sphere in a 3D environment.

The Rainbow 3D software calculates the response from multiple sound sources in a 3D space. In addition, the user can optimize the response using our FIR filtering technology.



Professional Sound Systems



LX Series

High-end Self-powered, DSP integrated Line Arrays. The LX Series have been designed as versatile line arrays to be used in a variety of applications, from small theatres to large concerts.



CLS Series

The CLS (Coaxial Line Source) Series is our newest scalable line array solution. Coaxial Mid/high drivers together with full electronic synergy through the coupling of the system amplification & integrated DSP technology.



CXA Series

The CXA constant curvature line source has been designed for both touring and permanent installations, where wide coverage is required from as few elements as possible.



ADP Series

The ADP cabinets have been designed for both portable and permanent installations. The series includes four full range cabinets, two stage monitors and two subwoofers.



GXR Series

Both compact and powerful, the GXR series is our latest solution for portable, light weight, powered speakers. The series incorporates three full range models, three subwoofers, as well as our best-selling line array GXR-LA210A.



HR Series

The HR Series consists of 10 different two-way, full-range and 4 subwoofer options, all delivering high output whilst retaining exceptional clarity, efficiency and guaranteeing lower distortion.



Ionic Series

Column speakers for portable or permanent applications where a low profile, discreet design is required. The Ionic comprises two modular columns, one coaxial full range and two subwoofers.



Juno Series

The Juno Series are weather-resistant, two-way full range loudspeakers. Ideal for indoor or outdoor applications. Certified IP 46 rating. With line transformer available. In black or white colour.



BS Series

The BS series has been designed to offer an affordable yet reliable series of cabinets with great performance and a sleek & attractive design and finish so that they not only sound great but also look impressive in any install.



CS Series

The CS series is the first in-ceiling series that Lynx Pro Audio offers, designed and intended for voice and background sound reinforcement. With one two-way speaker and one subwoofer.



DS Series

The DS series offer a full range horn loaded cabinet and a extremely high power subwoofer enclosure, both specifically designed for club and discotheque installs.



IXP Series

The IXP series offers a high power in-ceiling speakers range designed and intended for voice and background sound reinforcement. Consists of two coaxial two-way speakers and one subwoofer.



QB Series

The QB series is the smallest series Lynx Pro Audio offers and is designed and intended for background sound reinforcement where the power of the HR or BS series is not required.



Processors & amplifiers

ARK-70 and ARK-20 are the latest digital processors. Also, RS, HPX, SBA and XT series are our amplifiers. Designed for professionals researching quality, reliability and value.



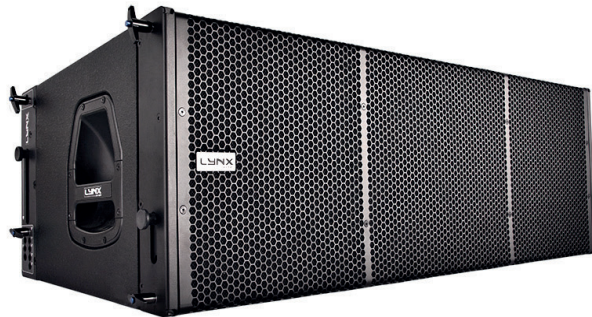
LX Series

LX Series Line Arrays are designed to offer high levels of SPL and sound clarity with an unbeatable set-up time. Our transducers are custom made and all components are carefully selected to ensure maximum sound quality.

All the cabinets include class D amplification, with switching power supply. The integrated amplification far exceeds the transducers' needs thus resulting in high output, high damping factor and extremely low levels of distortion. Furthermore a Digital Signal Processor is integrated in to each cabinet, optimizing all the system components and electronics. This DSP provides maximum system efficiency and total protection.

The old LX-V8 cabinet was the world's first line array to include a built-in inclinometer and this feature is now included on all LX series cabinets. The inclinometer is an automatic function to calculate cabinet splay angles. The inclinometer data can be viewed and controlled from the cabinet LCD display either manually or automatically. This system communicates with the DSP and modifies the equalization algorithms. According to the splay angle of the inclinometer the DSP compensates for atmospheric loss.

The result is a more efficient performance and a flat response, even at long distances. Ethernet capabilities are also available allowing the user to monitor and control the cabinets online.



- Class D Powered (tri-amplified)
- Integrated Digital Processing
- Internal temperature control
- Electronic protection
- Digital inclinometer system
- FIR linear phase filtering
- Online monitoring available
- Three way active system

Extremely high power, Self-powered Class D with PFC (Power Factor Correction), three-way Line Array.

Dual LF 12" (4" interleaved sandwich voice coil) neodymium woofers with double demodulating rings, Four MF 6.5" transducers with glass fiber cones & ultra-light voice coil and two HF 1.4" neodymium magnet drivers with titanium diaphragm and individual high precision wave guide.

DSP (FIR technology) controlled with 4000W amplification, 143dB SPL, built-in inclinometer.

Applications: theatres, concert halls and auditoriums, sport stadiums, large discos and outdoor events.



LX-V12

Components	LF: 2 x 12" neodymium Interleaved Sandwich Voice Coil.MF: 4 x 6.5" neodymium Glass fiber cones. HF: 2 x 1.4" neodymium drivers with titanium diaphragm and individual wave guides.
Frequency Range	45Hz – 20KHz (-10dB)
Frequency Response	55Hz – 18KHz (± 3dB)
Max. SPL	140dB / 143 dB peak
Coverage Angle	100° H x V according to configuration
Power	4000 W Class D with switching power supply & PFC
LF Amplifier	2 x 1200 W
MF Amplifier	1 x 1000 W
HF Amplifier	1 x 600 W
Processing	56 bit Lynx dspb-24 with FIR filters
Control	Cabinet angle detection – temperature sensor – Fan speed – Online Control
Control Connections	Ethernet (OCS) optional / USB (DSP programming)
AC Power	85 – 270V. 50/60 Hz with PFC
AC Connections	32A Neutrik powerCON NAC3FC-HC
Finish	Polyurea coating high resistant paint
Material	15mm Premium birch plywood
Dimensions	378 x 1175 x 479 mm (H x W x D) without pins
Weight	74 Kg (163 lbs)



- Class D Powered (Tri-amplified)
- Integrated Digital Processing
- Internal temperature control
- Electronic protection
- High quality components
- Online control available

Extremely high power, self-powered (Class D switch mode power supply) Cardioid sub-bass cabinet with three 18" (5" voice coil) low frequency neodymium transducers with Double Silicon Spider (DSS) technology and reinforced cones with carbon fiber.

DSP (FIR technology) controlled with 4200W amplification with PFC (Power Factor Correction), 141dB SPL.

Applications: theatres, concert halls and auditoriums, sport stadiums, large discos and outdoor events.

LX-318C

Components	Front: 2 x 18" (5" voice coil) neodymium. DDS technology. Reinforced cone with carbon fiber. Rear: 1 x 18" (5" voice coil) neodymium. DDS technology. Reinforced cone with carbon fiber.
Frequency Range	Cardiod: 30Hz – 100Hz (- 10dB) Omni: 30Hz – 160Hz (- 10dB)
Frequency Response	Cardiod: 32Hz – 95Hz (± 3dB) Omni: 32Hz – 140Hz (± 3dB)
Max. SPL	138dB / 141 dB peak
Format	Cardioid or omnidirectional
Coverage Angle	Depending on selected DSP configuration
Power	4200 W Class D with switching power supply and PFC (Power Factor Correction)
Processing	56 bit Lynx dspb-22
Control	Temperature sensor – Fan speed
Control Connections	Ethernet (OCS) optional / USB (DSP programming)
AC Power	85V – 270V. 50/60 Hz with PFC
AC Connections	32A Neutrik powerCON NAC3FC-HC
Finish	Polyurea coating high resistant paint
Material	18mm Premium birch plywood
Dimensions	620 x 1205 x 970 mm (H x W x D)
Weight	112 Kg (245 lbs)





Pablo Alborán in Montevideo, Uruguay
The famous Spanish singer performed at the Summer Theatre “Ramón Collazo” in Montevideo. Main stage contains 24 LX-V12 cabinets, with 12 on each side of the stage; 12 LX-318C making a physical bow and 3 LX-318C flown in the center.

New product!

CLS Series

The CLS (Coaxial Line Source) Series is our newest scalable line array solution.

There are two full range cabinets available, CLS-212 & CLS-28 and three sub-bass options; CLS-121S, CLS-218S and CLS-118S all designed to offer incredible output in the most compact format possible.

Extreme care has been taken to select and customize the most advanced components on the market, including coaxial Mid/high drivers together with full electronic synergy through the coupling of the system amplification & integrated DSP technology.

Total system control is also achieved through our 3D prediction software (Rainbow 3D) working together with our remote system management platform (OCS). These cutting edge softwares together with the CLS technology provides the most optimum and precise listening experience to every ear in the audience.

The enclosures are made from premium grade birch plywood and finished with a polyurea coating for longer durability & weather protection.





- Extraordinary power-to-size ratio
- Unique 8" dual diaphragm planar wave driver
- Perfect acoustical coupling of individual units to create virtually continuous line source & excellent phase coherence
- Extended bandwidth (65 Hz – 22 KHz)
- Integrated Digital processor (64 bit / 96 KHz) with FIR linear phase filtering
- Perfect Time Alignment avoiding Multi-Source Interference problems
- Ergonomic design in premium birch plywood & finished in polyurea
- 2.8" IPS display with multifunction joystick control

Extremely compact & powerful 3-way, self-powered, DSP integrated coaxial line array element.

It uses Dual high power 8" custom, neodymium transducers for the low frequencies and a unique 8" dual diaphragm coaxial planar wave driver for the mid/high frequencies.

Each cabinet is powered by a 2800W 2 channel class D amplifier with PFC and includes a 32 bit/96Khz integrated DSP

Manufactured from premium grade birch plywood and with a polyurea finish the system can be rigged & assembled in retracted position enabling a much easier set up without the need to lift each cabinet individually.

Applications: touring & fixed installations, sports stadiums, theatres, houses of worship, concert halls, auditoriums and club installations. Downfill for CLS-212.



CLS-28

Components	LF: 2 x 8" (2.5" DUO double layer in/out copper voice coil), waterproof cone treated on both sides, neodymium magnet, 1000W (AES). HF: 8" dual diaphragm coaxial planar wave driver. - Mid: 3.5" (90 mm) voice coil, 150 W (AES) - High: 1.5" (44.4 mm) voice coil, 80 W (AES)
Frequency Range	65 Hz - 22 KHz (- 6 dB)
Horizontal coverage	100°
Vertical coverage	Single element 10°
Max. SPL	135 dB / 141 dB
Power amplifier	2800W Class D with switching power supply & PFC LF amplifier: 1 x 1400W MF/HF amplifier: 1 x 1400W
DSP	Internal Lynx Processor DSPB-FL. 96 KHz / 64 bit double-precision, DSP with FIR filter linear phase. High performance 32 bit 96 KHz AD/DA converters 120dB
Crossover	Digital: FIR filter 550Hz / Passive: 6.3 KHz
Control	User control interface with 2.8" IPS display and multifunction joystick controller
Control connections	USB (DSP programming) Dual Ethernet port, Online Control System
Input	BAL/ UNBAL XLR connectors analog input AES/EBU digital input optional
Nominal voltage	100 - 240V AC @ 50-60 Hz
Operational voltage	85 - 264V AC
AC Connectors	16A Neutrik powerCON TRUE1 TOP with looping output
Finish	Polyurea coating high resistant paint
Material	15mm Premium birch plywood
Dimensions	254.5 x 600 x 480 mm (H x W x D) / with pins 613.5 mm (W)
Weight	27 Kg (59.5 lbs)
Intercabinet angle adjustment	0° to 10° in one degree increments



- Extraordinary high power output
- Integrated Digital processor (64 bit / 96 KHz)
- Front & rear audio and power connectors for cardioid applications
- Ergonomic design in premium birch plywood & finished in polyurea
- 2.8" IPS display with multifunction joystick control
- Stackable and flyable standard and/or cardioid configuration

High Output, extremely powerful sub-bass element designed to be used with the coaxial CLS-28 line array module.

It uses one high power, low distortion 18" custom speaker and can be used as a standard sub-bass or configurable as a cardioid.

Each cabinet is powered by a 3000W class D amplifier with PFC and includes a 32 bit/96Khz integrated DSP

Manufactured from premium grade birch plywood and with a polyurea finish the system can be flown in a single array or together with the CLS-28.

Applications: touring & fixed installations, sports stadiums, houses of worship, concert halls and auditoriums. Low frequency complement for CLS-28.

CLS-118S	
Components	LF: 18" Neodymium magnet transducer. 4.5" split winding copper voice coil, Waterproof cone with treatment for both sides. Aluminium demodulating ring for very low distortion. 1700 W (AES)
Frequency Range	30 Hz - 100 Hz (preset 100 Hz)
Coverage	Quasi omnidirectional
Max. SPL	131 dB / 137 dB
Power amplifier	3000W Class D with switching power supply & PFC
DSP	Internal Lynx Processor DSPB-FL. 96 KHz / 64 bit double-precision High performance 32 bit 96 KHz AD/DA converters 120dB
Configuration	Bass-reflex direct radiation enclosure
Control	User control interface with 2.8" IPS display and multifunction joystick controller
Control connections	USB (DSP programming) Dual Ethernet port, Online Control System
Input	BAL/ UNBAL XLR connectors analog input AES/EBU digital input optional
Nominal voltage	100 - 240V AC @ 50-60 Hz
Operational voltage	85 - 264V AC
AC Connectors	16A Neutrik powerCON TRUE1 TOP with looping output
Finish	Polyurea coating high resistant paint
Material	15 mm / 18 mm Premium birch plywood
Dimensions	600 x 613 x 770 mm (H x W x D) / with pins 609 x 613 mm (H x W)
Weight	58 Kg (127.8 lbs)





- Extraordinary high power output
- Integrated Digital processor (64 bit / 96 KHz)
- Front & rear audio and power connectors for cardioid applications
- Ergonomic design in premium birch plywood & finished in polyurea
- 2.8" IPS display with multifunction joystick control
- Stackable and flyable standard and/or cardioid configuration

High Output, extremely powerful sub-bass element designed to be used with the coaxial CLS-212 line array module.

It uses one high power, low distortion 21" custom speaker and can be used as a standard sub-bass or configurable as a cardioid.

Each cabinet is powered by a 3000W class D amplifier with PFC and includes a 32 bit/96Khz integrated DSP.

Manufactured from premium grade birch plywood and with a polyurea finish the system can be flown in a single array or together with the CLS-212.

CLS-121S

Components	LF: 21" Neodymium magnet transducer. 4" quattro in/out copper voice coil, Waterproof cone treated on both sides. Malt Cross Technology cooling system. Aluminium demodulating ring for very low distortion. 1600 W (AES)
Frequency Range	30 Hz - 90 Hz (preset 90 Hz)
Coverage	Quasi omnidirectional
Max. SPL	131 dB / 137 dB
Power amplifier	3000W Class D with switching power supply & PFC
DSP	Internal Lynx Processor DSPB-FL. 96 KHz / 64 bit double-precision High performance 32 bit 96 KHz AD/DA converters 120dB
Configuration	Bass-reflex direct radiation enclosure
Control	User control interface with 2.8" IPS display and multifunction joystick controller
Control connections	USB (DSP programming) Dual Ethernet port, Online Control System
Input	BAL/ UNBAL XLR connectors analog input AES/EBU digital input optional
Nominal voltage	100 - 240V AC @ 50-60 Hz
Operational voltage	85 - 264V AC
AC Connectors	16A Neutrik powerCON TRUE1 TOP with looping output
Finish	Polyurea coating high resistant paint
Material	15 mm / 18 mm Premium birch plywood
Dimensions	608 x 800 x 778 mm (H x W x D) / with pins 814.5 mm (W)
Weight	64 Kg (141 lbs)





- Extraordinary power-to-size ratio
- Unique 6.5" dual diaphragm planar wave driver
- Perfect acoustical coupling of individual units to create virtually continuous line source & excellent phase coherence
- Extended bandwidth (60 Hz - 22 KHz)
- Integrated Digital Processor (64 bit / 96 KHz) with FIR linear phase filtering
- Perfect Time Alignment avoiding Multi-Source Interference problems
- Ergonomic design in premium birch plywood & finished in polyurea
- 2.8" IPS display with multifunction joystick control

Extremely compact & extremely powerful 3-way, self-powered, DSP integrated coaxial line array element.

It uses Dual high power 12" custom, neodymium transducers for the low frequencies and two unique 6.5" dual diaphragm coaxial planar wave drivers for the mid/high frequencies.

Each cabinet is powered by a 6000W 2 channel class D amplifier with PFC and includes a 32 bit/96Khz integrated DSP

Manufactured from premium grade birch plywood and with a polyurea finish the system can be rigged & assembled in retracted position enabling a much easier set up without the need to lift each cabinet individually.

Applications: touring & fixed installations, sports stadiums, theatres, houses of worship, concert halls, auditoriums and club installations.



CLS-212

Components	LF: 2 x 12". 4" DUO double layer in/out copper voice coil, Waterproof cone treated on both sides, Neodymium magnet. 1400 W (AES) HF: 2 x 6.5" dual diaphragm coaxial planar wave driver. - Mid: 3.5" (90 mm) voice coil, 150 W (AES) - High: 1.5" (44.4 mm) voice coil, 80 W (AES)
Frequency Range	60 Hz - 22 KHz
Horizontal coverage	100°
Vertical coverage	Single element 10°
Max. SPL	142 dB / 148 dB
Power amplifier	6000 W Class-D with switching power supply & PFC LF amplifier: 1 x 3000W MF/ HF amplifier: 1 x 3000W
DSP	Internal Lynx Processor DSPB-FL. 96 KHz / 64 bit double-precision, DSP with FIR filter linear phase. High performance 32 bit 96 KHz AD/DA converters 120dB
Crossover	Digital: FIR filter 500 Hz / Passive: 6.3 KHz
Control	User control interface with 2.8" IPS display and multifunction joystick controller
Control connections	USB (DSP programming) Dual Ethernet port, Online Control System
Input	BAL/ UNBAL XLR connectors analog input AES/EBU digital input optional
Nominal voltage	100 - 240V AC @ 50-60 Hz
Operational voltage	85 - 264V AC
AC Connectors	16A Neutrik powerCON TRUE1 TOP with looping output
Finish	Polyurea coating high resistant paint
Material	15 mm / 18 mm Premium birch plywood
Dimensions	384 x 800 x 480 mm (H x W x D) / with pins 815.5 mm (W)
Weight	47 Kg (103.6 lbs)
Intercabinet angle adjustment	0° to 10° in one degree increments



- Extraordinary high power output
- Integrated Digital processor (64 bit / 96 KHz)
- Front & rear audio and power connectors for cardioid applications
- Ergonomic design in premium birch plywood & finished in polyurea
- 2.8" IPS display with multifunction joystick control
- Stackable and flyable standard and/or cardioid configuration

Compact and extremely powerful sub-bass element designed to be used with the coaxial CLS-212 or CLS-28 line array modules.

It uses two high power, low distortion 18" custom speaker and can be used as a standard sub-bass or configurable as a cardioid.

Each cabinet is powered by a 6000W class D amplifier with PFC and includes a 32 bit/96Khz integrated DSP

Manufactured from premium grade birch plywood and with a polyurea finish the system also has a number of dedicated accessories available.

Applications: touring & fixed installations, sports stadiums, theatres, houses of worship, concert halls, auditoriums and club installations. Low frequency complement for CLS-28 and CLS-212.



CLS-218S

Components	LF: Dual 18" Neodymium magnet transducer. 4.5" split winding copper voice coil. Waterproof cone treated on both sides. Aluminium demodulating ring for very low distortion. 1700 W (AES)
Frequency Range	30 Hz - 100 Hz (Preset 100 Hz)
Coverage	Quasi omnidirectional
Max. SPL	136 dB / 142 dB
Power amplifier	3000W Class D with switching power supply & PFC
DSP	Internal Lynx Processor DSPB-FL. 96 KHz / 64 bit double-precision High performance 32 bit 96 KHz AD/DA converters 120dB
Configuration	Bass-reflex direct radiation enclosure
Control	User control interface with 2.8" IPS display and multifunction joystick controller
Control connections	USB (DSP programming) Dual Ethernet port, Online Control System
Input	BAL/ UNBAL XLR connectors analog input AES/EBU digital input optional
Nominal voltage	100 - 240V AC @ 50-60 Hz
Operational voltage	85 - 264V AC
AC Connectors	16A Neutrik powerCON TRUE1 TOP with looping output
Finish	Polyurea coating high resistant paint
Material	18 mm Premium birch plywood
Dimensions	600 x 1200 x 770 mm (H x W x D)
Weight	81 Kg (178.5 lbs)



CXA Series

The CXA is intended as a flexible solution for both fixed installations and touring where wide coverage is required from as few line array elements as possible.

This line source system can be used as a single element or a combination of a maximum of 4 cabinets in array configuration delivering a 72° coverage in the vertical plane. Our HF Multidriver Waveguide system delivers 100H x 18V precise coverage for a multitude of installations. Thanks to its careful construction it can also be installed for symmetrical HF dispersion.

The CXA Array models are self-powered (Class D) with switching power supply and 1400W of amplification each. They are also controlled by the latest generation of Digital Signal Processing with a DSP integrated in to each cabinet, optimizing all the system components and electronics, providing maximum system efficiency and total protection.



- Class D Powered
- Integrated Digital Processing
- Internal temperature control
- Electronic protections
- FIR linear phase filtering
- Online monitoring available
- Two way active system

High Output, self powered (class D switch mode power supply with PFC), constant curvature line array element.

Consists of a 12" (2.5" voice coil) transducer with special HF Multidriver Waveguide system delivering 100°H x 18°V precise coverage. DSP (FIR technology) controlled with 1400W amplification, 128dB SPL

Made from premium birch plywood and finished with a polyurea coating.

Applications: live events, clubs, houses of worship, theatres, fixed installations and touring.

CXA-12

Components	LF: 12", 2.5" voice coil, Malt Cross Cooling System HF: Multidriver system with wave guide, 1.4" aluminium voice coil with titanium diaphragm
Frequency Range	60 Hz - 20 KHz (-10dB)
Frequency Response	70 Hz - 18 KHz (± 3dB)
Max. SPL	128 dB
Coverage	100° H x 18° V
Power	1400 W Class D with switching power supply & PFC
LF Amplifier	1 x 800 W
HF Amplifier	1 x 600 W
Processing	48 KHz / 56 bit double precision DSP with FIR filters
Control	User control interface with LCD
Control Connections	USB (DSP programming)
AC Power	90 – 264V. 50/60 Hz with PFC
AC Connections	16A Neutrik powerCON TRUE1 with looping output
Finish	Polyurea coating high grade resistant paint
Material	15mm Premium birch plywood
Dimensions	357 x 632 x 484 mm (H x W x D)
Weight	31 Kg (68 lbs)





- Class D Powered
- Integrated Digital Processing
- Internal temperature control
- Electronic protections
- FIR linear phase filtering
- Online monitoring available
- Two way active system

High output, self powered (class D switch mode power supply with PFC), omni-directional subwoofer cabinet.

Consists of a 18" (4" ventilated voice coil) neodymium transducer. DSP controlled with 1400W amplification, 132dB SPL.

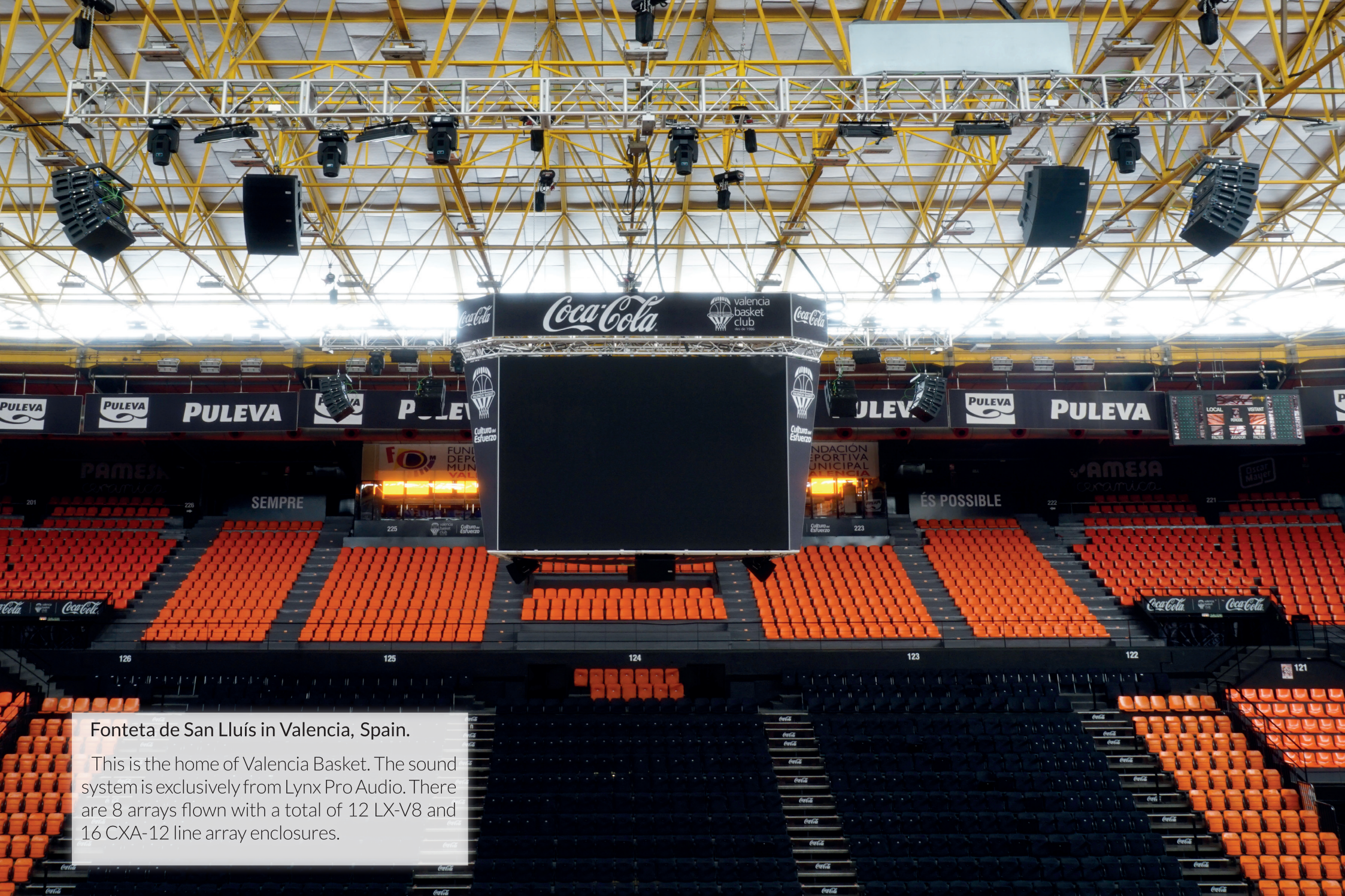
Made from premium birch plywood and finished with a polyurea coating.

Applications: theatres, concert halls and auditoriums, sport stadiums, large discos and outdoor events.

CXA-18S

Components	LF: 18", 4" voice coil, Neodymium magnet assembly
Frequency Range	30 Hz - 140 Hz (-10dB)
Frequency Response	35 Hz - 125 Hz (± 3 dB)
Max. SPL	132 dB
Coverage	Omnidirectional
Power	1400 W Class D with switching power supply & PFC
LF Amplifier	1 x 1400 W
Processing	48 KHz / 56 bit double precision DSP
Control	User control interface with LCD
Control Connections	USB (DSP programming)
AC Power	90 – 264V, 50/60 Hz with PFC
AC Connections	16A Neutrik powerCON TRUE1 with looping output
Finish	Polyurea coating high grade resistant paint
Material	18mm Premium birch plywood
Dimensions	556 x 632 x 696 mm (H x W x D)
Weight	45 Kg (99 lbs)





Fonteta de San Lluís in Valencia, Spain.

This is the home of Valencia Basket. The sound system is exclusively from Lynx Pro Audio. There are 8 arrays flown with a total of 12 LX-V8 and 16 CXA-12 line array enclosures.

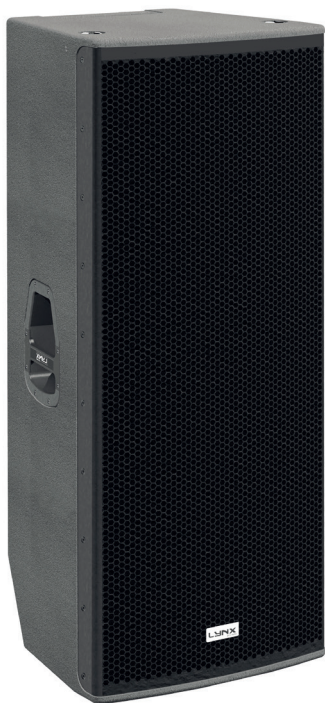


ADP Series

The ADP range of cabinets is designed for both portable and permanent installations. They offer one of the most technologically advanced sound products available on the market, with a tour-friendly range of powered cabinets designed for quick and easy set-ups and with no need for heavy external amplification racks. The ADP Series offer high levels of SPL and sound clarity whilst maintaining a compact and portable design, with an unbeatable power to size ratio.

All the transducers are custom made with neodymium magnets, being much lighter than a conventional speaker. The ADP units use Class D amplification with switching power supply. The integrated amplification far exceeds the transducers' needs thus resulting in high output, high damping factor and extremely low levels of distortion. Furthermore a Digital Signal Processor is integrated in to each cabinet, providing maximum system efficiency and total protection.

Every box comes with 20 presets which include full-range, various crossovers and a flat preset so that the user can adjust the parameters manually. Ethernet capabilities are also available allowing the user to monitor and control de cabinet online. The ADP cabinets offer the utmost sound reinforcement reliability, incorporating the latest acoustical and electronical technology and delivering incredible, dynamic sound.



- Class D Powered (tri-amplified)
- Integrated Digital Processing
- Internal temperature control
- Electronic protection
- FIR linear phase filtering
- Online monitoring available
- Two way active system

High Output, self powered (Class D switch mode power supply), two-way cabinet.

Consists of two 15" neodymium magnet transducers with nomex cones & suspension and a 1.4" exit compression driver with titanium diaphragm, mounted on a 60°H x 50°V constant directivity horn.

DSP (FIR technology) controlled with 2000W amplification, 143dB SPL.

Applications: front fill/ side fill/ reinforcement, smaller clubs or discord, smaller live stages or events, compact voice reinforcement and portable installation.

ADP-215

Components	LF/MF: 2 x 15" neodymium HF: 1.4" titanium diaphragm 3" voice coil compression driver
Frequency Range	40 Hz – 20 KHz (-10 dB)
Frequency Response	45 Hz – 18 KHz (± 3 dB)
Max. SPL	140 dB / 143dB peak
Coverage Angle	60°H x 50°V constant directivity horn
Power Amplifier	2000 W Class D
LF/MF Amplifier	2 x 750 W
HF Amplifier	1 x 500 W
Processing	56 bit Lynx DSPB-22 with FIR filters
Cabinet Adjustment	Back panel LCD
Internal Controls	Temperature sensor, Online Control system, Fan Speed
Control Connections	Ethernet (OCS) optional, USB (DSP programming)
AC Power	230V / 115V selectable. 50/60 Hz 5A
AC Connections	16A Neutrik powerCON with link output
Finish	Polyurea coating high grade resistant paint
Material	15mm Premium birch plywood
Dimensions	1147 x 489 x 415 mm (H x W x D)
Weight	52 kg (114 lbs)





- Class D Powered (tri-amplified)
- Integrated Digital Processing
- Internal temperature control
- Electronic protection
- FIR linear phase filtering
- Online monitoring available
- Two way active system

High Output, self powered (Class D switch mode power supply), two-way cabinet.

Consists of a 15" neodymium magnet transducer with nomex cones and a 1.4" compression driver with a 2.5" voice coil titanium diaphragm mounted on a 80°H x 50°V constant directivity, rotatable horn.

DSP (FIR technology) controlled with 1500W amplification, 136dB SPL.

Applications: front fill/ side fill/ reinforcement, smaller clubs or discord, smaller lives stages or eventes, compact voice reinforcement and portable installation.



ADP-15

Components	LF/MF: 1 x 15" neodymium HF: 1.4" titanium diaphragm 2.5" voice coil
Frequency Range	60 Hz – 20 KHz (-10 dB)
Frequency Response	70 Hz – 18 KHz (± 3 dB)
Max. SPL	133 dB / 136 peak
Coverage Angle	80° H x 50° V rotatable horn
Power Amplifier	1500 W Class D
LF/MF Amplifier	1 x 750 W
HF Amplifier	1 x 750 W
Processing	56 bit Lynx DSPB-22 with FIR filters
Cabinet Adjustment	Back panel LCD
Internal Controls	Temperature sensor, Online Control system, Fan Speed
Control Connections	Ethernet (OCS) optional, USB (DSP programming)
AC Power	230V / 115V selectable. 50/60 Hz 5A
AC Connections	16A Neutrik powerCON with link output
Finish	Polyurea coating high grade resistant paint
Material	15mm Premium birch plywood
Dimensions	677 x 460 x 431 mm (H x W x D)
Weight	39 Kg (86 lbs)



- Class D Powered (bi-amplified)
- Integrated Digital Processing
- Internal temperature control
- Electronic protection
- FIR linear phase filtering
- Online monitoring available
- Two way active system

High Output, self-powered (Class D switch mode power supply), two-way cabinet.

Consists of a 12" (3" voice coil) neodymium magnet transducer with nomex cones and a 1.4" compression driver with a 2.5" voice coil titanium diaphragm mounted on a 80°H x 50°V constant directivity rotatable horn.

DSP (FIR technology) controlled with 1500W amplification, 136dB SPL.

Applications: front fill/ side fill/ reinforcement, smaller clubs or discord, smaller live stages or eventes, compact voice reinforcement and portable installation.



ADP-12

Components	LF/MF: 1 x 12" neodymium (3" Interleaved Sandwich voice coil) HF: 1.4" titanium diaphragm 2.5 voice coil
Frequency Range	60 Hz - 20 KHz (-10 dB)
Frequency Response	65 Hz - 18 KHz (± 3 dB)
Max. SPL	133 dB / 136dB peak
Coverage Angle	80° H x 50° V Rotatable horn
Power Amplifier	1500 W Class D
LF/MF Amplifier	1 x 750 W
HF Amplifier	1 x 750 W
Processing	56 bit Lynx DSPB-22 with FIR filters
Cabinet Adjustment	Back panel LCD
Internal Controls	Temperature sensor, Online Control system, Fan Speed
Control Connections	Ethernet (OCS) optional, USB (DSP programming)
AC Power	230V / 115V selectable. 50/60 Hz 5A
AC Connections	16A Neutrik powerCON with link output
Finish	Polyurea coating high grade resistant paint
Material	15mm Premium birch plywood
Dimensions	637 x 376 x 411 mm (H x W x D)
Weight	28 kg (62 lbs)



- Class D Powered (bi-amplified)
- Integrated Digital Processing
- Internal temperature control
- Electronic protection
- FIR linear phase filtering
- Online monitoring available
- Two way active system

High Output, self-powered (Class D switch mode power supply), two-way cabinet.

Consists of two 6" (1.5" voice coil) neodymium magnet transducers with aluminium demodulating rings and a 1" compression driver with titanium diaphragm, mounted on a 90°H x 60°V rotatable, exponential horn.

DSP (FIR technology) controlled with 1000W amplification, 127dB SPL.

Applications: front fill/ side fill/ reinforcement, smaller clubs or discord, smaller live stages or events, compact voice reinforcement and portable installation.



ADP-26

Components	LF/MF: 2 x 6" neodymium (aluminium demodulating rings) HF: 1" titanium diaphragm compression driver
Frequency Range	65 Hz - 20 KHz (-10 dB)
Frequency Response	75 Hz - 18 KHz (± 3 dB)
Max. SPL	124 dB / 127 peak
Coverage Angle	90° H x 60° V rotatable horn
Power Amplifier	1000 W Class D
LF/MF Amplifier	1 x 500 W
HF Amplifier	1 x 500 W
Processing	56 bit Lynx DSPB-22 with FIR filters
Cabinet Adjustment	Back panel LCD
Internal Controls	Temperature sensor, Online Control system, Fan Speed
Control Connections	Ethernet (OCS) optional, USB (DSP programming)
AC Power	230V / 115V selectable. 50/60 Hz 5A
AC Connections	16A Neutrik powerCON with link output
Finish	Polyurea coating high grade resistant paint
Material	15mm Premium birch plywood
Dimensions	530 x 222 x 269 mm (H x W x D)
Weight	13kg (28 lbs)



- Class D Powered (bi-amplified)
- Integrated Digital Processing
- Internal temperature control
- Electronic protection
- FIR linear phase filtering
- Online control available

High output, self powered (class D switch mode power supply) with PFC (Power Factor Correction), two-way stage monitor.

Consists of two 12" transducers with aluminium voice coil and a compression driver with 1.4" titanium diaphragm with 55° conic dispersion.

DSP (FIR technology) controlled with 2250W amplification, 139dB SPL.

Applications: reinforcement, stage monitor, portable installation and voice reinforcement.



ADP-212M

Components	LF/MF: 2x12" HF: 1.4" titanium diaphragm driver
Frequency Range	55 Hz – 20 KHz (-10 dB)
Frequency Response	60 Hz – 18 KHz (± 3 dB)
Max. SPL	136 dB / 139 dB peak
Coverage Angle	55° H x 55° V
Power Amplifier	2250 W Class D
LF/MF Amplifier	1 x 1500 W
HF Amplifier	1 x 750 W
Processing	56 bit Lynx DSPB-22 with FIR filters
Cabinet Adjustment	Side panel LCD
Internal Controls	Temperature sensor, Online Control system, Fan Speed
Control Connections	Ethernet (OCS) optional, USB (DSP programming)
AC Power	85V – 270V. 50/60 Hz with PFC 3A
AC Connections	16A Neutrik powerCON with link output
Finish	Polyurea coating high grade resistant paint
Material	15mm Premium birch plywood
Dimensions	445 x 688 x 655 mm (H x W x D)
Weight	42 kg (92 lbs)



- Class D Powered (bi-amplified)
- Integrated Digital Processing
- Internal temperature control
- Electronic protection
- FIR linear phase filtering
- Online monitoring available

High output, self powered (Class D switch mode power supply), two-way stage monitor.

Consists of a 12" (3" voice coil) coaxial transducer with demodulating rings and a 3" VC compression driver with a titanium diaphragm and a 40°H x 60°V dispersion horn.

DSP (FIR technology) controlled with 1500W amplification, 132dB SPL.

Applications: reinforcement, stage monitor, portable installation and compact voice reinforcement.



ADP-12M

Components	LF/MF: 1 x 12" coaxial neodymium HF: 3" VC compression driver
Frequency Range	60 Hz – 20 KHz (-10 dB)
Frequency Response	75 Hz – 18 KHz (± 3 dB)
Max. SPL	129 dB / 132 dB peak
Coverage Angle	40° H x 60° V
Power Amplifier	1500 W Class D
LF/MF Amplifier	1 x 750 W
HF Amplifier	1 x 750 W
Processing	56 bit Lynx DSPB-22 with FIR filters
Cabinet Adjustment	Side panel LCD
Internal Controls	Temperature sensor, Online Control system, Fan Speed
Control Connections	Ethernet (OCS) optional, USB (DSP programming)
AC Power	230V / 115V selectable. 50/60 Hz 5A
AC Connections	16A Neutrik powerCON with link output
Finish	Polyurea coating high grade resistant paint
Material	15mm Premium birch plywood
Dimensions	370 x 470 x 554 mm (H x W x D)
Weight	20 kg (44 lbs)



- Class D Powered
- Integrated Digital Processing
- Internal temperature control
- Electronic protection
- High quality components
- Online monitoring available
- Bass reflex sub unit

High output, self powered (Class D switch mode power supply) direct radiation subwoofercabinet.

Consists of an 18" (4" DUO voice coil) neodymium magnet transducer with DCS (Double Conex Spider) technology.

DSP controlled with 1400W amplification with PFC, 136dB SPL.

Applications: front fill / side fill / reinforcement, smaller clubs or discos, smaller live stages and events, portable installation.



ADP-18S

Components	1 x 18" Woofer with Nomex cone
Frequency Range	30 Hz – 250 Hz (-10 dB)
Frequency Response	35 Hz – 150 Hz (± 3 dB)
Max. SPL	133 dB/ 136 dB peak
Coverage Angle	Omnidirectional
Power Amplifier	1000 W Class D switching power supply & PFC
Configuration	Bass-reflex, Direct radiation
Processing	56 bit Lynx DSPB-22
Cabinet Adjustment	Back panel LCD
Internal Controls	Temperature sensor, Online Control system
Control Connections	Ethernet (OCS) optional, USB (DSP programming)
AC Power	90 – 264V. 50/60 Hz with PFC
AC Connections	16A Neutrik powerCON with link output
Finish	Polyurea coating high grade resistant paint
Material	18mm Premium birch plywood
Dimensions	707 x 525 x 717 mm (H x W x D)
Weight	51 kg (112 lbs)



- Class D Powered
- Integrated Digital Processing
- Internal temperature control
- Electronic protection
- High quality components
- Online monitoring available
- Bass reflex sub unit

High output, self powered (Class D switch mode power supply) direct radiation subwoofer cabinet.

Consists of an 12" (4" ISV voice coil) neodymium magnet transducer with double spider for improved linearity.

DSP controlled with 1400W amplification with PFC, 134dB SPL.

Applications: front fill / side fill / reinforcement, smaller clubs or discos, smaller live stages and events, portable installation.



ADP-12S

Components	1 x 12" Neodymium Woofer with Nomex cone
Frequency Range	40 Hz – 180 Hz (-10 dB)
Frequency Response	45 Hz – 150 Hz (± 3 dB)
Max. SPL	131 dB/ 134 dB peak
Coverage Angle	Omnidirectional
Power Amplifier	1000 W Class D with switching power supply
Configuration	Bass reflex, Direct radiation
Processing	56 bit Lynx DSPB-22
Cabinet Adjustment	Back panel LCD
Internal Controls	Temperature sensor, Online Controlsystem
Control Connections	Ethernet (OCS) optional, USB (DSP programming)
AC Power	90 – 264V. 50/60 Hz with PFC
AC Connections	16A Neutrik powerCON with link output
Finish	Polyurea coating high grade resistant paint
Material	15mm Premium birch plywood
Dimensions	495 x 380 x 644 mm (H x W x D)
Weight	29 kg (64 lbs)



National Maritime Museum in South Korea
This is the third largest museum in South Korea. It is located in Busan and its main auditorium is equipped with ADP-15, QB-8, ADP-15M and ADP-18S.



GXR Series

Both compact and powerful, the GXR Series is our solution for portable, light weight, powered speakers. This series has been designed to offer first class portable systems as economically as possible without compromising at all on quality. The series incorporates one line array module (dual 10") three full range, two-way models (12", 15", dual 15") and three subwoofers (18", dual 15" & dual 18").

All models are self-powered (Class D) with switching power supply. The integrated amplification far

exceeds the transducers' needs thus resulting in high output, high damping factor and extremely low levels of distortion. The high efficiency modules also include PFC, guaranteeing reliability and consistency in all operating conditions and low power consumption (less than 0.55W in standby).

All GXR Series cabinets are also controlled by the latest generation of Digital Signal Processing with a DSP integrated in to each cabinet. This DSP, with 56bit internal processing and double dynamics optimizes all the system components and

electronics, providing maximum system efficiency and total protection whilst significantly and noticeably lowering distortion. They also utilize linear phase FIR filters.

All the cabinets are finished in rugged, premium birch plywood, coated with polyurea and protected by front steel grilles all backed with a special dark grey triple layer, acoustical textile which allows greater air flow and reduces heat and humidity.



GXR-LA10A

The GXR-LA10A is the ideal solution for both install projects and live events where a compact but powerful line array is required.

Bi-amplified, two-way, class D enclosure that delivers high power levels from a very compact format. It incorporates two 10" (2" coil) Low/Mid speakers whilst the high frequencies have a 1.4" output compression driver coupled to a waveguide offering 100° H x 10° V coverage.

This cabinet offers very easy to use rigging hardware which is both quick and reliable. The system is very easy to use and control without the need for any external amps. To extend the low frequency response there are 2 options. The GXR-D15A is designed to be flown or stacked in perfect combination with the GXR-LA10A units and when extreme low frequencies are required the GXR-D18A is recommended.



- Class D Powered (bi-amplified)
- Integrated Digital Processing
- Internal temperature control
- Electronic protection
- Digital inclinometer system
- FIR linear phase filtering
- Online monitoring available
- Two way active system

The GXR-LA210A is a self-powered (Class D), two-way enclosure that delivers high power levels from a very compact format. It uses two 10" (2"coil) speakers for the Low/Mid frequencies. For the high frequencies it uses a 1.4" output compression driver coupled to a waveguide offering 100° H x 10° V coverage.

DSP (FIR filters) controlled with 1400W amplification, 135 dB SPL.

Applications: live events, clubs, houses of worship, theatres, fixed installations and touring.



GXR-LA210A

Components	LF: 2 x 10", 2" voice coil, Malt Cross Cooling System HF: 1.4" Exit throat, 3" voice coil with titanium diaphragm
Frequency Range	60 Hz - 20 KHz (-10dB)
Frequency Response	68 Hz - 18 KHz (± 3 dB)
Max. SPL	135 dB
Coverage Angle	100° H x 10° V
Power	1400 W Class D with switching power supply & PFC
LF Amplifier	1 x 800 W RMS, 1600 W peak
HF Amplifier	1 x 600 W RMS, 1200 W peak
Processing	96 KHz / 64 bit double-precision, DSP with FIR filter linear phase
Control	User control interface with 2.8" IPS screen
Control Connections	Ethernet (OCS) / USB (DSP updating)
AC Power	90 - 264V, 50/60 Hz with PFC
AC Connections	16A Neutrik powerCon TRUE1 with looping
Finish	Polyurea coating high grade resistant paint
Material	15mm Premium birch plywood
Dimensions	298 x 790 x 436 mm (H x W x D)
Weight	31 Kg (68.2 lbs)



- Class D Powered
- Integrated Digital Processing
- Internal temperature control
- Electronic protection
- Online monitoring available

High output subwoofer, self powered (class D switch mode power supply with PFC) Bi-amp.

The GXR-D15A can be flown together with the GXR-LA10A.

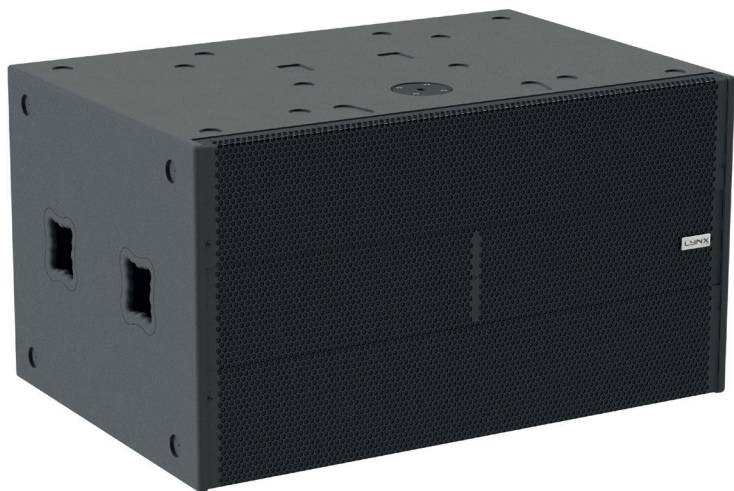
Consists of dual 15" neodymium low frequencies transducers (4" voice coil), direct radiation configuration. DSP controlled with 2400W amplification, 134 dB SPL.

Applications: live events, clubs, houses of worship, theatres, fixed installations and touring.



GXR-D15A

Components	LF: 2 x 15" (4" voice coil), neodymium magnetic assembly
Frequency Range	30Hz - 140Hz (-10dB) processed
Frequency Response	35 Hz - 125 Hz (± 3dB) processed
Max. SPL	134 dB/140 dB peak
Coverage Angle	Omnidirectional
Power	3000W Class D with switching power supply & PFC
LF Amplifier	1 x 3000 W
Processing	96 KHz / 64 bit double-precision, DSP with FIR filter linear phase
Control	User control interface with 2.8" IPS screen
Control Connections	USB (DSP updating) / Ethernet (OCS)
Input	Analog / AES3 optional
AC Power	90 - 264V. 50/60 Hz with PFC
AC Connections	16A Neutrik powerCon TRUE1 with looping output
Finish	Polyurea coating high grade resistant paint
Material	18mm Premium birch plywood
Dimensions	505 x 790 x 690 mm (H x W x D)
Weight	63 Kg (139 lbs)



- Class D Powered
- Integrated Digital Processing
- Internal temperature control
- Electronic protection
- Online monitoring available

High output subwoofer, self powered (class D switch mode power supply with PFC) Bi-amp.

Consists of dual 18" neodymium low frequencies transducers (4" voice coil), direct radiation configuration. DSP controlled with 2400W amplification, 134 dB SPL.

Applications: live events, clubs, houses of worship, theatres, fixed installations and touring.

GXR-D15A

Components	LF: 2 x 18", 4" voice coil, neodymium magnetic assembly
Frequency Range	30 Hz – 120 Hz (-10dB)
Frequency Response	35 Hz - 100 Hz (± 3dB)
Max. SPL	135 dB / 141 dB peak
Coverage Angle	Omnidirectional
Power	3000W Class D with switching power supply & PFC
LF Amplifier	1 x 3000 W
Processing	96 KHz / 64 bit double-precision, DSP with FIR filter linear phase
Control	User control interface with 2.8" IPS screen
Control Connections	USB (DSP updating) / Ethernet (OCS)
Input	Analog / AES3 optional
AC Power	90 – 264V, 50/60 Hz with PFC
AC Connections	16A Neutrik powerCon TRUE1 with looping output
Finish	Polyurea coating high grade resistant paint
Material	18mm Premium birch plywood
Dimensions	605 x 1100 x 750 mm (H x W x D)
Weight	92 kg (202 lbs)





- Class D Powered
- Integrated Digital Processing
- Internal temperature control
- Electronic protection
- FIR linear phase filtering
- Online monitoring available
- Two way active system

High Output, self powered (class D switch mode power supply with PFC), two-way cabinet.

Consists of dual 15" (2.5" voice coil) transducers with a 1.4" compression driver with a PM4 polymer diaphragm mounted on a 60°H x 50°V constant directivity horn. DSP (FIR Filters) controlled with 1400W amplification, 131dB SPL.

Applications: theatres & auditoriums, houses of worship, small/middle sized clubs & disco, smaller live stages / events, front fill / side fill reinforcement and portable sound reinforcement..



GXR-215

Components	LF: 2 x 15" 2,5" voice coil, Malt Cross Cooling System HF: 1'4" Exit compression Driver , 1,75" aluminium voice coil
Frequency Range	55Hz - 20 KHz (-10dB)
Frequency Response	60Hz - 18 KHz (± 3dB)
Max. SPL	131 dB
Coverage Angle	60° H x 50° V constant directivity horn.
Power	1400 W Class D with switching power supply & PFC
LF Amplifier	1 x 800 W
HF Amplifier	1 x 600 W
Processing	48 KHz / 56 bit double precision DSP with FIR filters
Control	User control interface with LCD
Control Connections	USB (DSP programming)
AC Power	85 – 270V. 50/60 Hz with PFC
AC Connections	16 A Neutrik powerCON TRUE1 with looping output
Finish	Polyurea coating high grade resistant paint
Material	15mm Premium birch plywood
Dimensions	1140 x 444 x 486 mm (H x W x D)
Weight	45 Kg (99 lbs)



- Class D Powered
- Integrated Digital Processing
- Internal temperature control
- Electronic protection
- FIR linear phase filtering
- Online monitoring available
- Two way active system

High Output, self powered (class D switch mode power supply with PFC), two-way cabinet.

Consists of a 15" (2.5" voice coil) transducer with a 1" compression driver with a polyimide diaphragm mounted on a 90°H x 40°V precise directivity horn. DSP (FIR Filters) controlled with 1400W amplification, 128dB SPL.

Applications: theatres & auditoriums, houses of worship, small/ middle sized clubs & disco, smaller live stages / events, front fill / side fill reinforcement and portable sound reinforcement..



GXR-15

Components	LF: 15" 2,5" voice coil, Malt Cross Cooling System HF: 1" Exit compression Driver , 1,7" aluminium voice coil
Frequency Range	60Hz - 20KHz (-10dB)
Frequency Response	66Hz - 18KHz (± 3dB)
Max. SPL	128 dB
Coverage Angle	90° x 40° constant directivity horn. Rotatable.
Power	1400 W Class D with switching power supply & PFC
LF Amplifier	1 x 800 W
HF Amplifier	1 x 600 W
Processing	48 KHz / 56 bit double precision DSP with FIR filters
Control	User control interface with LCD
Control Connections	USB (DSP programming)
AC Power	90 – 264V. 50/60 Hz with PFC
AC Connections	16 A Neutrik powerCON TRUE1 with looping output
Finish	Polyurea coating high grade resistant paint
Material	15mm Premium birch plywood
Dimensions	730 x 444 x 433 mm (H x W x D)
Weight	28.5 Kg (62.8 lbs)



- Class D Powered
- Integrated Digital Processing
- Internal temperature control
- Electronic protection
- FIR linear phase filtering
- Online monitoring available
- Two way active system

High Output, self powered (class D switch mode power supply with PFC), two-way cabinet.

Consists of a 15" (2.5" voice coil) transducer with a 1" compression driver with a polyimide diaphragm mounted on a 90°H x 40°V precise directivity horn. DSP (FIR Filters) controlled with 1400W amplification, 128dB SPL.

Applications: theatres & auditoriums, houses of worship, small/ middle sized clubs & disco, smaller live stages / events, front fill / side fill reinforcement and portable sound reinforcement..



GXR-12

Components	LF: 12": 2,5" voice coil, Malt Cross Cooling System HF: 1" Exit compression Driver , 1,75" aluminium voice coil
Frequency Range	60Hz - 20KHz (-10dB)
Frequency Response	66Hz - 18KHz (± 3dB)
Max. SPL	127 dB
Coverage Angle	90° x 40° constant directivity horn. Rotatable.
Power	1400 W Class D with switching power supply & PFC
LF Amplifier	1 x 800 W
HF Amplifier	1 x 600 W
Processing	48 KHz / 56 bit double precision DSP with FIR filters
Control	User control interface with LCD
Control Connections	USB (DSP programming)
AC Power	90 – 264V. 50/60 Hz with PFC
AC Connections	16 A Neutrik powerCON TRUE1 with looping output
Finish	Polyurea coating high grade resistant paint
Material	15mm Premium birch plywood
Dimensions	639 x 370 x 386 mm (H x W x D)
Weight	23.5 Kg (51.7 lbs)



- Class D Powered
- Integrated Digital Processing
- Internal temperature control
- Electronic protection
- Online monitoring available
- Three way active system

High output, self powered (class D switch mode power supply with PFC), direct radiation subwoofer cabinet.

Consists of a 18" (3" voice coil) transducer with triple roll surround. DSP controlled with 1400W amplification, 132dB SPL.

Applications: theatres & auditoriums, houses of worship, small/ middle sized clubs & disco, smaller live stages / events, front fill / side fill reinforcement and portable sound reinforcement.



GXR-18S

Components	LF: 1 x 18", 3" voice coil
Frequency Range	38Hz - 140 Hz (-10dB)
Frequency Response	44Hz - 125 Hz (± 3dB)
Max. SPL	132 dB
Coverage Angle	Omnidirectional
Power	1400 W Class D with switching power supply & PFC
LF Amplifier	1 x 1400 W
Processing	48 KHz / 56 bit double precision DSP
Control	User control interface with LCD
Control Connections	USB (DSP programming)
AC Power	85 – 270V, 50/60 Hz with PFC
AC Connections	16 A Neutrik powerCON TRUE1 with looping output
Finish	Polyurea coating high grade resistant paint
Material	18 mm Premium birch plywood
Dimensions	505 x 505 x 700 mm (H x W x D)
Weight	41 Kg (90 lbs)



Super Penguin Celebrity Game in Shanghai, China

This event brings together entertainment celebrities and professional basketball players and is one of the most watched. 32 LX-V12 and 16 GXR-LA10A were flown at the stadium.



HR Series

The HR Series has been designed to offer the utmost sound quality for installations. The range consists of 10 different two-way, full-range and 4 sub-bass options, all delivering high output whilst retaining exceptional clarity, efficiency and guaranteeing lower distortion whilst delivering superior reliability and sonic performance.

All full range models are either bi-amp or passive selectable. For greater flexibility the 12" and 15" full range cabinets are available in 4 different

options depending on the coverage pattern and power required for the installation and for sub-bass reinforcement two different dual 18" are also available.

After considerable testing only the best components have been selected for the HR series. Materials such as hexacone, neodymium, nomex are all employed in our LF/MF drivers to ensure superior performance. The high frequency drivers all use either mylar, titanium

or polyimide each with their own unique benefits and qualities whilst our aluminium horns offer improved compression driver cooling and very low distortion at high pressure levels.

All HR Series cabinets are finished in rugged, premium birch plywood, coated with water-based black paint and protected by front steel grilles all backed with a special dark grey triple layer, acoustical textile which allows greater air flow and reduces heat and humidity.

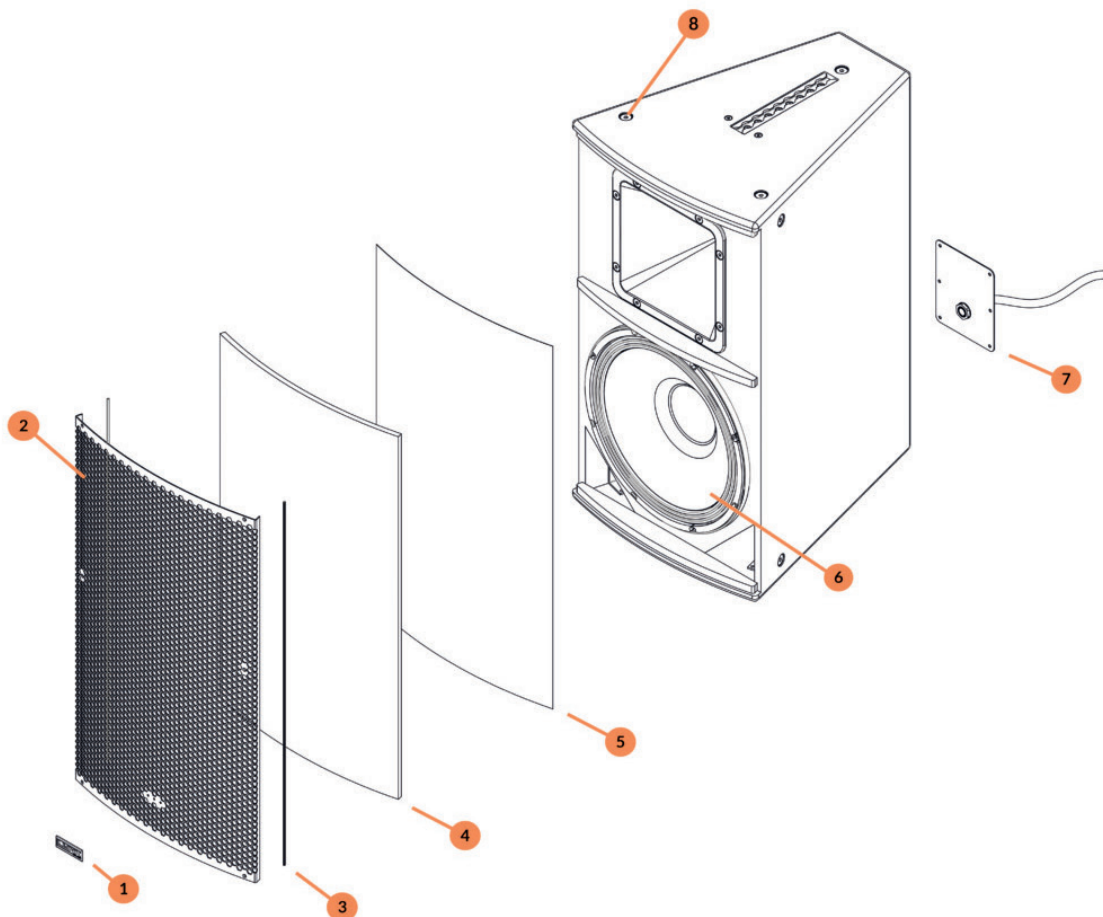
Marine Grade Option

Weather resistant

Our Marine Grade option speakers are designed to withstand harder weather conditions, where the cabinets are exposed to the elements.

The following cabinets are also available for Marine environments, such as cruise ships for example:

- HR-8
- HR-1564/7 & HR-1596/7
- HR-1264/7 & HR-1296/7
- HR-1564/5 & HR-1596/5
- HR-1564/5 & HR-1596/5
- HR-26
- HR-28
- HR-218/36
- HR-218/12
- HR-18/6



Features:

1. Anodized aluminium logo for durability outdoors.
2. Stainless steel 1 mm 316 L grill. Also available in aluminum with protective layer and micro textured paint.
3. Weatherstrip edging for extreme protection.
4. Acoustex filter: hydrophobic polyester sheet to prevent the penetration of water and external elements produced by extreme weather conditions.
5. 35 ppi Acoustic foam to protect against dust particles
6. Waterproof protected cone on both sides
7. Aluminum back plate with pressure gland for an extra tight connection and easy installation.
8. M10 stainless steel 316 L screws (A4).



- Ultra-compact
- Versatile sound reinforcement
- High performance
- 90° x 90° wide dispersion
- ARK processor optimised preset
- Multiple rigging / mounting options

Outdoor version available

Ultra compact, light and very versatile passive enclosure specially designed for all types of installation projects. Consists of a 6.5" transducer (impedance 16 ohm) and a 1" high frequency Mylar tweeter. It offers 119 dB SPL (400 W program).

It is an excellent solution for large installation projects or basic installations. It has a complete range of accessories to provide an easier installation. It is recommended to apply the high performance preset included in the ARK-20 processor.

This series also has the possibility to be manufactured in our **Marine Grade**, ideal for outdoor situations where the cabinets are exposed to the elements.

Applications: club & bar installations, sound reinforcement, theatres, houses of worship, multi media spaces, public address.

HR-6

Components	LF: 1 x 6.5" - 2" voice coil HF: 1 x Tweeter 1" - 1.25" aluminium voice coil, Mylar diaphragm
Frequency Range	62 Hz - 20 KHz (-10dB)
Frequency Response	88 Hz - 18 KHz (± 3dB)
Sensitivity	93 dB (1W@1m)
Max. SPL	116 dB - 122 dB Peak
Coverage	90° H x 90° V
Rated Power (AES)	200 W (400 W program, 800 W peak)
Crossover	Passive
Nominal Impedance	16 Ω
Connectors	2 x Neutrik Speakon NL4MP / 4 x Terminal Block 7.62 mm between pins
Finish	Polyurea coating
Material	15mm Premium birch plywood
Dimensions	300 x 236 x 220 mm (H x W x D)
Weight	7.5 Kg (17 lbs)





- Ultra-compact
- Versatile sound reinforcement
- High performance
- Dispersion 90° x 60° rotatable
- ARK processor optimised preset
- Multiple rigging / mounting options

Marine Grade option available

Passive ultra compact, lightweight and very versatile enclosure especially designed for all types of installation projects. It consists of a 8" transducer with Neodimium magnet and a 1" high frequency compression driver. It offers 125 dB SPL (600 W program).

It is an excellent solution for all types of fixed installations and has a complete range of accessories to provide an easier installation. It is recommended to apply the high performance preset included in the ARK-20 processor.

This series also has the possibility to be manufactured in our **Marine Grade**, ideal for outdoor situations where the cabinets are exposed to the elements.

Applications: club & bar installations, sound reinforcement, theatres, houses of worship, multi media spaces, public address.



HR-8

Components	LF: 1 x 8" Neodimium – 2" alu voice coil kapton cone HF: 1" Exit compression Driver , 1.75" aluminium voice coil, Polyester diaphragm
Frequency Range	60 Hz – 20 KHz (-10dB)
Frequency Response	78 Hz – 18 KHz (± 3dB)
Sensitivity	97 dB (1W@1m)
Max. SPL	122 dB – 128 dB Peak
Coverage	90° H x 60° rotatable
Rated Power (AES)	300 W (600 W program, 1200 W peak)
Crossover	Passive
Nominal Impedance	8 Ω
Connectors	2 x Neutrik Speakon NL4MP / 4 x Terminal Block 7.62 mm between pins
Finish	Polyurea coating
Material	15mm Premium birch plywood
Dimensions	400 x 274 x 298 mm (H x W x D)
Weight	10 Kg (22 lbs)



- Versatile Sound Reinforcement
- High performance
- Coverage 60° x 40° or 90° x 60°, rotatable horns
- Precise band pass directivity control
- ARK processor optimised preset
- Multiple rigging and mounting options

Marine Grade option available

High performance, ultra-compact, full range, two way bi-amp/passive cabinet.

It consists of a 15" transducer and a 1.4" high frequency compression driver. They offer 2 dispersion options. The model HR-1564/7 provides a narrow dispersion of 60° x 40° (rotatable) and the model HR-1596/7 offers a wide dispersion of 90° x 60° (rotatable). 129dB SPL (1400W program).

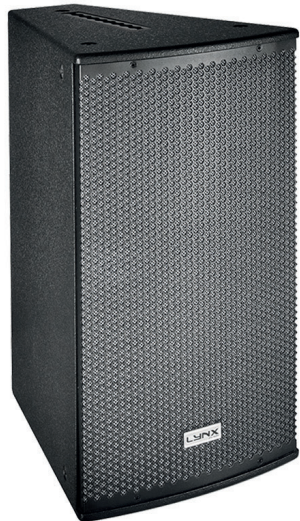
This series also has the possibility to be manufactured in our **Marine Grade**, ideal for outdoor situations where the cabinets are exposed to the elements.

Applications: club & bar installations, sound reinforcement, theatres, houses of worship, conferences, public address.



HR-1564/7 & HR-1596/7

Components	LF: 15". 3.5" aluminium voice coil, waterproof front side cone treatment, neodymium magnet HF: 1.4" Exit compression Driver, 2.5" aluminium voice coil, Titanium diaphragm
Frequency Range	58 Hz - 20 KHz (-10dB)
Frequency Response	64 Hz - 18 KHz (± 3dB)
Sensitivity	Passive Mode: 94 dB (1W@1m)
Max. SPL	Passive Mode: 123dB - 129dB Peak Bi-Amp LF: 126dB - 132dB Peak Bi-Amp HF: 127dB - 133dB Peak
Coverage	Constant directivity horn (Rotatable) 90° x 60° (HR-1596/7) 60° x 40° (HR-1564/7)
Rated Power (AES)	Passive: 700 W (1400 W prog, 2800 W peak) Bi- Amp LF: 700 W (1400 W prog, 2800 W peak) Bi-Amp HF: 80 W (160 W program, 320W peak)
Crossover	Bi-Amp / Passive (Selectable)
Nominal Impedance	8 Ω Passive / Biamp LF 8 Ω, HF 8 Ω
Connectors	2 x Neutrik Speakon NL4MP
Finish	Polyurea coating high grade resistant paint
Material	15mm Premium birch plywood
Dimensions	790 x 444 x 541 mm (H x W x D)
Weight	32 Kg (70.5 lbs)



- Versatile Sound Reinforcement
- High performance
- Coverage 60° x 40° or 90° x 60°, rotatable horns
- Precise band pass directivity control
- ARK processor optimised preset
- Multiple rigging and mounting options

Marine Grade option available

High performance, ultra-compact, full range, two way bi-amp/passive cabinet.

It consists of a 12" transducer and a 1.4" high frequency compression driver. They offer 2 dispersion options. The model HR-1264/7 provides a narrow dispersion of 60° x 40° (rotatable) and the model HR-1296/7 offers a wide dispersion of 90° x 60° (rotatable). 129dB SPL (1400W program).

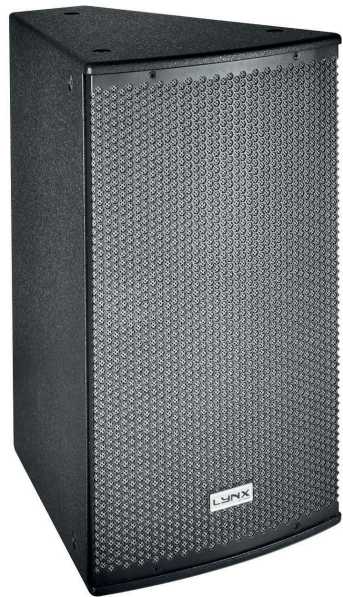
This series also has the possibility to be manufactured in our **Marine Grade**, ideal for outdoor situations where the cabinets are exposed to the elements.

Applications: club & bar installations, sound reinforcement, theatres, houses of worship, conferences, public address.



HR-1264/7 & HR-1296/7

Components	LF: 12", 3.5" Aluminium voice coil, waterproof front side cone treatment, neodymium magnet HF: 1.4" Exit compression Driver, 2.5" aluminium voice coil, Titanium diaphragm
Frequency Range	59 Hz - 20 KHz (-10dB)
Frequency Response	65 Hz - 18 KHz (± 3dB)
Sensitivity	Passive Mode: 94 dB (1W@1m)
Max. SPL	Passive Mode: 123dB - 129dB Peak Bi-Amp LF: 125dB - 131dB Peak Bi-Amp HF: 127dB - 133dB Peak
Coverage	Constant directivity horn (Rotatable) 90° x 60° (HR-1296/7) 60° x 40° (HR-1264/7)
Rated Power (AES)	Passive mode: 700 W (1400 W program, 2800 W peak) Bi- Amp LF: 700 W (1400 W program, 2800 W peak) Bi-Amp HF: 80 W (160 W program, 320W peak)
Crossover	Bi-Amp / Passive (Selectable)
Nominal Impedance	8 Ω passive / Biamp. LF 8 Ω HF 8 Ω
Connectors	2 x Neutrik Speakon NL4MP
Finish	Polyurea coating high grade resistant paint
Material	15mm Premium birch plywood
Dimensions	705 x 377 x 495 mm (H x W x D)
Weight	26 Kg (57 lbs)



- Versatile Sound Reinforcement
- High performance
- Coverage 60° x 40° or 90° x 60°, rotatable horns
- Precise band pass directivity control
- ARK processor optimised preset
- Multiple rigging and mounting options

Marine Grade option available

High performance, ultra-compact, full range, two way bi-amp/passive cabinet.

It consists of a 15" transducer and a 1" high frequency compression driver. They offer 2 dispersion options. The model HR-1564/5 provides a narrow dispersion of 60° x 40° (rotatable) and the model HR-1596/5 offers a wide dispersion of 90° x 60° (rotatable). 129dB SPL (1000W program).

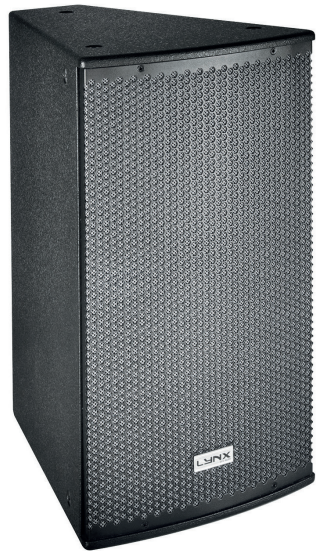
This series also has the possibility to be manufactured in our **Marine Grade**, ideal for outdoor situations where the cabinets are exposed to the elements.

Applications: club & bar installations, sound reinforcement, theatres, houses of worship, conferences, public address.



HR-1564/5 & HR-1596/5

Components	LF: 15", 2.5" voice coil, Malt Cross Cooling System HF: 1" Exit compression Driver, 1.75" aluminium voice coil
Frequency Range	58 Hz - 20 KHz (-10dB)
Frequency Response	63 Hz - 18 KHz (± 3dB)
Sensitivity	Passive Mode: 96 dB (1W@1m)
Max. SPL	Passive Mode: 123dB - 129dB Peak Bi-Amp LF: 125dB - 131dB Peak Bi-Amp HF: 126dB - 132dB Peak
Coverage	Constant directivity horn (Rotatable) 90° x 60° (HR-1596/5) 60° x 40° (HR-1564/5)
Rated Power (AES)	Passive: 500 W (1000 W prog, 2000 W peak) Bi- Amp LF: 500 W (1000 W prog, 2000 W peak) Bi-Amp HF: 60 W (120 W program, 240W peak)
Crossover	Bi-Amp / Passive (Selectable)
Nominal Impedance	8 Ω Passive / Biamp LF 8 Ω, HF 8 Ω
Connectors	2 x Neutrik Speakon NL4MP
Finish	Polyurea coating high grade resistant paint
Material	15mm Premium birch plywood
Dimensions	790 x 444 x 541 mm (H x W x D)
Weight	30 Kg (66 lbs)



- Versatile Sound Reinforcement
- High performance
- Coverage 60° x 40° or 90° x 60°, rotatable horns
- Precise band pass directivity control
- ARK processor optimised preset
- Multiple rigging and mounting options

Marine Grade option available

High performance, ultra-compact, full range, two way bi-amp/passive cabinet.

It consists of a 12" transducer and a 1" high frequency compression driver. They offer 2 dispersion options. The model HR-1264/5 provides a narrow dispersion of 60° x 40° (rotatable) and the model HR-1296/5 offers a wide dispersion of 90° x 60° (rotatable). 127dB SPL (1000W program).

This series also has the possibility to be manufactured in our **Marine Grade**, ideal for outdoor situations where the cabinets are exposed to the elements.

Applications: club & bar installations, sound reinforcement, theatres, houses of worship, conferences, public address..



HR-1264/5 & HR-1296/5

Components	LF: 12", 2.5" voice coil, Malt Cross Cooling System HF: 1" Exit compression Driver, 1.75" aluminium voice coil
Frequency Range	60 Hz - 20 KHz (-10dB)
Frequency Response	65 Hz - 18 KHz (± 3dB)
Sensitivity	Passive Mode: 94 dB (1W@1m)
Max. SPL	Passive Mode: 121dB - 127dB Peak Bi-Amp LF: 124dB - 130dB Peak Bi-Amp HF: 126dB - 132dB Peak
Coverage	Constant directivity horn (Rotatable) 90° x 60° (HR-1296/5) 60° x 40° (HR-1264/5)
Rated Power (AES)	Passive mode: 500 W (1000 W program, 2000 W peak) Bi- Amp LF: 500 W (1000 W program, 2000 W peak) Bi-Amp HF: 60 W (120 W program, 240W peak)
Crossover	Bi-Amp / Passive (Selectable)
Nominal Impedance	8 Ω passive / Biamp. LF 8 Ω HF 8 Ω
Connectors	2 x Neutrik Speakon NL4MP
Finish	Polyurea coating high grade resistant paint
Material	15mm Premium birch plywood
Dimensions	705 x 377 x 495 mm (H x W x D)
Weight	25 Kg (55 lbs)



- Ultra-compact light weight
- Versatile sound reinforcement
- High performance
- 90° x 60° wide dispersion (rotatable)
- ARK processor optimised preset
- Multiple rigging / mounting options

Marine Grade option available

High performance, ultra-compact, full range, two way bi-amp/passive cabinet.

It consists of two 8" hexacone transducers and a 1" high frequency compression driver. It offers a wide dispersion of 90° x 60° and 126dB SPL (1000W program).

Made with premium birch plywood and finished in polyurea coating.

This series also has the possibility to be manufactured in our **Marine Grade**, ideal for outdoor situations where the cabinets are exposed to the elements.

Applications: club & bar installations, sound reinforcement, theatres, houses of worship, conferences, public address.



HR-28	
Components	LF: 2 x 8", 2" aluminium voice coil, hexacone cone HF: 1" Exit compression Driver, 1.75" aluminium voice coil, Polyester diaphragm
Frequency Range	54 Hz - 20 KHz (-10dB)
Frequency Response	60 Hz - 18 KHz (± 3dB)
Sensitivity	Passive Mode: 93 dB (1W@1m)
Max. SPL	Passive Mode: 120dB - 126dB Peak Bi-Amp LF: 120dB - 126dB Peak Bi-Amp HF: 125dB - 131dB Peak
Coverage	90° x 60° (Rotatable)
Rated Power (AES)	Passive: 500 W (1000 W prog, 2000 W peak) Bi- Amp LF: 500 W (1000 W prog, 2000 W peak) Bi-Amp HF: 70 W (140 W program, 280W peak)
Crossover	Bi-Amp / Passive (Selectable)
Nominal Impedance	4 Ω passive / Biamp. LF 4 Ω HF 4 Ω
Connectors	2 x Neutrik Speakon NL4MP
Finish	Polyurea coating high grade resistant paint
Material	15mm Premium birch plywood
Dimensions	665 x 279 x 298 mm (H x W x D)
Weight	17 Kg (37 lbs)



- Ultra-compact light weight
- Versatile sound reinforcement
- High performance
- 90° x 60° wide dispersion (rotatable)
- ARK processor optimised preset
- Multiple rigging / mounting options

Marine Grade option available

High performance, ultra-compact, full range, two way bi-amp/passive cabinet.

.It consists of two 6.5" transducers (at 8ohm impedance) and a 1" high frequency compression driver. It offers a wide dispersion of 90° x 60° and 122dB SPL (800W program).

Made with premium birch plywood and finished in polyurea coating.

This series also has the possibility to be manufactured in our **Marine Grade**, ideal for outdoor situations where the cabinets are exposed to the elements.

Applications: club & bar installations, sound reinforcement, theatres, houses of worship, conferences, public address.



HR-26

Components	LF: 2 x 6.5", 2" voice coil HF: 1" Exit compression Driver , 1.75" aluminium voice coil, PM-4 polymer diaphragm
Frequency Range	72 Hz - 20 KHz (-10dB)
Frequency Response	78 Hz - 18KHz (± 3dB)
Sensitivity	Passive mode: 90 dB (1W@1m)
Max. SPL	Passive mode: 117 dB - 122 dB peak Bi-Amp LF: 119 dB - 125 dB peak Bi-Amp HF: 125 dB - 131 dB peak
Coverage	80° H x 60° V Constant directivity horn
Rated Power (AES)	Passive mode: 400 W (800 W program, 1600 W peak) Bi-Amp LF: 400 W (800 W program, 1600 W peak) B-Amp HF: 70 W (140 W program, 280 W peak)
Crossover	Bi-Amp / Passive (Selectable)
Nominal Impedance	8 Ω - also available in 4 Ω
Connectors	2 x Neutrik Speakon NL4MP
Finish	Polyurea coating high grade resistant paint
Material	15mm Premium birch plywood
Dimensions	249 x 568 x 252 mm (H x W x D)
Weight	15 Kg (33 lbs)

HR-218/36



- Incredible size to power ratio
- Versatile Sound reinforcement
- High performance 3600 W
- ARK processor optimised preset

Marine Grade option available



HR-218/36

Components	2 x 18", 4" tetracoil dual voice coil
Frequency Range	29 Hz - 200 Hz (-10dB)
Frequency Response	34 Hz - 200 Hz (± 3dB)
Sensitivity	103 dB (1W@1m) π
Max. SPL	139 dB / 145 dB Peak
Coverage	Omnidirectional
Rated Power (AES)	3600 W (7200 W program, 1400 W peak)
Crossover	Active
Nominal Impedance	4 Ω
Connectors	2 x Neutrik Speakon NL4MP
Finish	Polyurea coating high grade resistant paint
Material	18mm Premium birch plywood
Dimensions	585 x 1080 x 781 mm (H x W x D)
Weight	82 Kg (180 lbs)

HR-218/12



Marine Grade option available



- Incredible size to power ratio
- Versatile Sound reinforcement
- High performance 1200 W
- ARK processor optimised preset

HR-218/12

Components	2 x 18", 3" copper voice coil
Frequency Range	40 Hz - 200 Hz (-10dB)
Frequency Response	46 Hz - 200 Hz (± 3dB)
Sensitivity	105 dB (1W@1m) π
Max. SPL	136 dB - 142 dB Peak
Coverage	Omnidirectional
Rated Power (AES)	1200 W (2400 W program, 4800 W peak)
Crossover	Active
Nominal Impedance	4 Ω
Connectors	2 x Neutrik Speakon NL4MP
Finish	Polyurea coating high grade resistant paint
Material	18mm Premium birch plywood
Dimensions	585 x 1080 x 624 mm (H x W x D)
Weight	68 Kg (150 lbs)

HR-215S



- Ultra compact triple band-pass
- Very high performance 2000 W
- Versatile sound reinforcement
- ARK processor optimised preset



HR-215S	
Components	LF 2 x 15" transducers
Frequency Range	30 Hz – 160 Hz (-10dB)
Frequency Response	35 Hz - 150 Hz (± 3dB)
Sensitivity	100 dB (1W@1m) π
Max. SPL	133 dB / 139 dB Peak
Coverage	Quasi Omnidirectional
Rated Power (AES)	2000 W (4000 W program, 8000 W peak)
Crossover	Active
Nominal Impedance	4 Ω
Connectors	2 x Neutrik Speakon NL4MP
Finish	Polyurea coating high grade resistant paint
Material	18mm Premium birch plywood
Dimensions	644 x 463 x 600 mm (H x W x D)
Weight	59 kg (130 lbs)

HR-18/6



- Incredible size to power ratio
- Versatile Sound reinforcement
- High performance 1200 W program
- ARK processor optimised preset

Marine Grade option available



HR-18/6	
Components	1 x 18", 3" copper voice coil
Frequency Range	40 Hz - 200 Hz (-10dB)
Frequency Response	46 Hz - 200 Hz (± 3dB)
Sensitivity	101 dB (1W@1m) π
Max. SPL	129 dB - 135 dB Peak
Coverage	Omnidirectional
Rated Power (AES)	600 W (1200 W program, 2400 W peak)
Crossover	Active
Nominal Impedance	8 Ω
Connectors	2 x Neutrik Speakon NL4MP
Finish	Polyurea coating high grade resistant paint
Material	18mm Premium birch plywood
Dimensions	511 x 505 x 681 mm (H x W x D)
Weight	32 kg (70.5 lbs)



Oh My Club in Madrid, Spain

Situated in the financial district of Madrid with a 1.500m² room that evolves from a restaurant to a nightclub during the night. It's the new trendy spot among celebrities. Installed with HR-28, HR-1264/7 and HR-218/36 cabinets.





Ionic Series

The Ionic series is Lynx Pro Audio's answer to light, portable or permanent installation column speakers. The Ionic series comprises two full-range modular columns (IONIC-100 and IONIC-50), one coaxial speaker (IONIC-5CX) and two subwoofers (IONIC-18S and IONIC-12S).

These columns are very low profile, versatile, aesthetically pleasing and are designed for reverberant installations where intelligible, clear voice reproduction is paramount and where a low profile, discreet column is required.

The full-range columns can be powered from the active subwoofers and also offer various preset configurations from the integrated DSP.

Available in a variety of colours, with the full-range cabinets finished in anti-rust steel and the subs finished in rugged, premium birch plywood, coated with polyurea. All protected by front steel grilles and backed with a special triple layer, acoustical textile which allows greater air flow and reduces heat and humidity.

Ionic 100



- Compact & versatile
- Powered from the sub bass unit
- DSP presets for various applications
- Weather proof components
- Easy to use, easy to install
- Portable
- Available in RAL colours by request and water-vinyl customization

Outdoor version available

The Ionic-100 is a passive column speaker part of the ionic series. The Ionic cabinets are compact, modular and powerful and the complete series includes two sub bass units, one coaxial speakers and two column models.

The Ionic-100 uses 12 x 3" (0.75" voice coil) neodymium transducers offering a coverage of 15° +/-5° V x 100° H and 121dB SPL. Weight has been left as low as possible providing easy set ups in fixed installation as well as easy transport for portable applications.

The Ionic-100 is powered from the subwoofer units which include a Digital Signal Processor offering different presets to cover a wide range of sound applications.

Available in RAL colours by request and water-vinyl customization.



Technical Data

Ionic 100	
Components	12 x 3" speaker with 0.75" voice coil
Frequency Range	150 Hz - 20 KHz (-10dB)
Frequency Response	180 Hz - 20 KHz (± 3dB)
Sensitivity	96 dB (1W@1m)
Max. SPL	121 dB / 127 dB Peak
Coverage	15° ±5° V x 100° H
Rated Power (AES)	300 W, 600 W program, 1200 W peak
Nominal Impedance	8 Ω
Connectors	2 x Neutrik Speakon NL4MP
Finish	Epoxy paint / bespoke pattern
Material	1.5 mm stainless steel
Dimensions	1000 x 89 x 117 mm (H x W x D)
Weight	13 kg (29 lbs)

Applications: PA system, clubs & theatres, houses of worship, public buildings, commercial complex; solo artists, band & DJ.

Outdoor version: Ionic-100ov

The Ionic-100ov is also available as an outdoor version. The cabinets receive the following treatment so that they can be installed in outside locations:

- Micro perforated aluminium grill with special polyester protection against water.
- Tropicalized speaker treatment with special latex covering.
- Double cabinet sealing

100V Line transformer:

The Ionic-LT is the ideal accessory to transform Ionics series to 100 V line. Using the same enclosure shape, finished in stainless steel, it's a discreet and easy-to-use accessory.

Ionic 50



- Compact & versatile
- Powered from the sub bass unit
- DSP presets for various applications
- Weather proof components
- Easy to use, easy to install
- Portable
- Available in RAL colours by request and water-vinyl customization

Outdoor version available

The Ionic-50 is a passive column speaker part of the Ionic series. The Ionic cabinets are compact, modular and powerful and the complete series includes two sub bass units, one coaxial speaker and two column models.

The Ionic-50 uses 6 x 3" (0.75" voice coil) neodymium transducers offering a coverage of 15° +/-5° V x 100° H and 119dB SPL.

Weight has been left as low as possible providing easy set ups infixed installation as well as easy transport for portable applications.

The Ionic-50 is powered from the subwoofer units which include a Digital Signal Processor offering different presets to cover a wide range of sound applications.

Available in RAL colours by request and water-vinyl customization.



Technical Data

Ionic 50	
Components	6 x 3" speaker with 0.75" voice coil
Frequency Range	150 Hz – 20 KHz (-10dB)
Frequency Response	180 Hz - 20 KHz (± 3dB)
Sensitivity	97 dB (1W@1m)
Max. SPL	119 dB / 125 dB Peak
Coverage	15° ±5° V x 100° H
Rated Power (AES)	150 W, 300 W program, 600 W peak
Nominal Impedance	32 Ω
Connectors	2 x Neutrik Speakon NL4MP
Finish	Epoxy paint / bespoke pattern
Material	1.5 mm stainless steel
Dimensions	502 x 89 x 117 mm (H x W x D)
Weight	7 kg (15 lbs)

Applications: PA system, clubs & theatres, houses of worship, public buildings, commercial complex; solo artists, band & DJ.

Outdoor version: Ionic-50ov

The Ionic-50ov is also available as an outdoor version. The cabinets receive the following treatment so that they can be installed in outside locations:

- Micro perforated aluminium grill with special polyester protection against water.
- Tropicalized speaker treatment with special latex covering.
- Double cabinet sealing

100V Line transformer:

The Ionic-LT is the ideal accessory to transform Ionics series to 100 V line. Using the same enclosure shape, finished in stainless steel, it's a discreet and easy-to-use accessory.



- Compact & versatile
- Powered from the sub bass unit or external amp
- ARK optimised preset
- Easy to use, easy to install
- Portable
- Available in black or white

The Ionic-5CX is a passive coaxial speaker part of the Ionic series. The Ionic cabinets are compact, modular and powerful and the complete serie also include two sub bass units and two column models.

The Ionic-5CX uses a 5" coaxial speaker (1.5" LF voice coil and 1" HF voice coil) offering a coverage of 70° conical dispersion and 117dB SPL (300 W program). Weight has been left as low as possible providing easy set ups in fixed installation as well as easy transport for portable applications.

The Ionic-5CX is powered from the subwoofer unit Ionic-12S which includes a Digital Signal Processor offering different presets to cover a wide range of sound applications. It can also be powered from an external amplifier using the ARK optimised preset.



Ionic 5CX	
Components	1 x 5" coaxial speaker with LF 1.5" and HF 1" voice coil
Frequency Range	64 Hz - 20 KHz (-10dB)
Frequency Response	90 Hz - 20 KHz (± 3dB)
Max. SPL	114 dB - 120 dB peak
Sensitivity	93 dB (1W@1m)
Coverage	70° conical dispersion
Rated Power (AES)	150 W, 300 W program, 600 W peak
Nominal Impedance	16 Ω
Connectors	2 x Neutrik Speakon NL4MP / 4 x Terminal Block 7.62 mm between pins
Finish	Polyurea coating high grade resistant paint
Material	10 mm premium birch plywood
Dimensions	140 x 140 x 220 mm (H x W x D)
Weight	3 Kg (6.6 lbs)

Applications: PA system, clubs & theatres, houses of worship, public buildings, commercial complex; solo artists, band & DJ.

Line transformer version: Ionic 5CXv

The Ionic 5CXv is a weather-resistant loudspeaker. Compact & versatile, easy to use, easy to install. 5" coaxial speaker offering a coverage of 70° conical dispersion and 117dB SPL. 100 W autoformer / selectable 8 Ω or 100 V.



- Compact & versatile
- Self Powered (Class D)
- DSP presets for various applications
- Weather proof components
- Easy to use, easy to install
- Portable
- Available in black or white

The Ionic-18S is a powered subwoofer enclosure part of the Ionic series. The Ionic cabinets are compact, modular and powerful and the complete series includes two sub units, one coaxial speaker and two column models.

The Ionic-18S uses 1 x 18" (3" voice coil) neodymium transducer offering an ultra compact subwoofer enclosure with 132dB SPL.

The power module (Class D with switching power supply) includes a Digital Signal Processor which offers different presets to cover a wide range of sound applications complementing the column speakers.

Ionic-18S provides quick and easy set ups for both fixed installations and portable applications.

Applications: PA system, clubs & theatres, houses of worship, public buildings, commercial complex; solo artists, band & DJ.



Ionic 18S

Components	18". 3" voice coil
Frequency Range	38 Hz - 250 Hz (-10dB)
Frequency Response	42 Hz - 250 Hz (± 3dB)
Max. SPL	132 dB
Coverage Angle	Omnidirectional
Power	2400 W Class D with switching power supply & PFC
LF Amplifier	1 x 1400 W
Speaker Output Amplifier	2 x 600 W @ 4 Ω
Processing	48 KHz / 56 bit double precision DSP
Control	User control interface with LCD
Control Connections	Ethernet (OCS) optional / USB (DSP programming)
AC Power	85 – 270V. 50/60 Hz with PFC
AC Connections	16A Neutrik powerCON TRUE1 with looping output
Finish	Polyurea coating high grade resistant paint
Material	18mm Premium birch plywood
Dimensions	513 x 505 x 704 mm (H x W x D)
Weight	37 Kg (81.5 lbs)



- Compact & versatile
- Self Powered (Class D)
- DSP presets for various applications
- Weather proof components
- Easy to use, easy to install
- Portable
- Available in black or white

The Ionic-12S is a powered sub enclosure part of the Ionic series. The ionic cabinets are compact, modular and powerful and the complete series includes two subwoofer units, one coaxial speaker and two column models.

The Ionic-12S uses 1 x 12" (3" voice coil) neodymium transducers offering an ultra compact sub enclosure with 127dB SPL.

The power module (Class D with switching power supply) includes a Digital Signal Processor which offers different presets to cover a wide range of sound applications complementing the column speakers.

Ionic-12S provides quick and easy set ups for both fixed installations and portable applications.

Applications: PA system, clubs & theatres, houses of worship, public buildings, commercial complex; solo artists, band & DJ.



Ionic 12S

Components	12". 3" voice coil
Frequency Range	40 Hz - 250 Hz (-10dB)
Frequency Response	46 Hz - 250 Hz (± 3dB)
Max. SPL	127 dB
Coverage Angle	Omnidirectional
Power	1400 W Class D with switching supply & PFC
LF Amplifier	1 x 700 W
Speaker Output Amplifier	1 x 700 W @ 8 Ω
Processing	48 KHz / 56 bit double precision DSP
Control	User control interface with LCD
Control Connections	Ethernet (OCS) optional / USB (DSP programming)
AC Power	85 – 270V. 50/60 Hz with PFC
AC Connections	16A Neutrik powerCON TRUE1 with looping output
Finish	Polyurea coating high grade resistant paint
Material	15mm Premium birch plywood
Dimensions	407 x 440 x 520 mm (H x W x D)
Weight	23 Kg (50.6 lbs)



Oceanogràfic in Valencia, Spain

One of the most important marine complexes in the world, integrated in the City of Arts and Science. This park has 10 ionic-100 column speakers in the dolphinarium, including the roof of the amphitheater and the borders of the dolphin pool.

BS series





- Compact two-way passive cabinet
- Multi-angle enclosure
- 90° x 60° rotatable horn
- Screwless grille with protective acoustic textile
- Integrated ergonomic handle
- Hidden speakon connection
- Top hat for pole mounting
- Multiple installation options, including stage monitor
- Polyurea coating

The BS-8 is a compact, two-way passive cabinet. Consists of a 8" (2" voice coil) LF transducer and a 1" HF driver mounted on a 90° x 60° rotatable horn offering a wide range of applications from fixed installations, frontfill and as a stage monitor.

The 8" driver offers high power handling and high sensitivity with low harmonic distortion and linear response. The cone is waterproof and has been treated on both sides. The 1" HF driver delivers high sensitivity with a PETP diaphragm. The cabinet can be complemented by the BS-112 or BS-118 subwoofers and offers tremendous sound and clarity over short/mid distances.

Constructed from premium birch plywood and coated in high resistant polyurea paint. The enclosure also offers a screw free grille together with a number of dedicated accessories. Although the BS-8 can be used without a processor we recommend that the cabinet presets are applied for a maximum optimization and performance.

Applications: club & bar installations, sound reinforcement, theatres, houses of worship, multi media spaces and public address.



BS-8

Components	LF: 8" speaker, 2" (50 mm) copper wire voice coil, waterproof cone with treatment for both sides HF: 1" exit throat, (25 mm) voice coil, PETP dome compression driver
Frequency Range	70 Hz - 18 KHz (± 3 dB)
Sensitivity	93 dB
Max. SPL/ Peak*	118 dB / 124 dB
Rated Power (AES)	300 W AES, 600 W program, 1200 W peak
Dispersion	90° x 60° rotatable
Nominal Impedance	8 Ω
Connectors	2 x NEUTRIK Speakon NL4
Finish	Polyurea coating high grade resistant paint
Material	15 mm premium birch plywood
Dimensions	456 x 255 x 259 mm (H x W x D)
Weight	12 Kg (26.4 lbs)
Fittings	5 x M8, single pole-mount, ergonomic handle on the back position
Shape Enclosure	Multi angle enclosure



- Compact two-way passive cabinet
- Multi-angle enclosure
- 90° x 60° rotatable horn
- Screwless grille with protective acoustic textile
- Integrated ergonomic handle
- Hidden speakon connection
- Top hat for pole mounting
- Multiple installation options, including stage monitor

The BS-8 is a compact, two-way passive cabinet. Consists of a 8" (1.5" voice coil) LF transducer and a 1" HF driver mounted on a 90° x 60° rotatable horn offering a wide range of applications from fixed installations, frontfill and as a stage monitor.

The 8" driver offers high power handling and high sensitivity with low harmonic distortion and linear response. The cone is waterproof and has been treated on both sides. The 1" HF driver delivers high sensitivity with a PETP diaphragm. The cabinet can be complemented by the BS-112 or BS-118 subwoofers and offers tremendous sound and clarity over short/mid distances.

The enclosure also offers a screw free grille together with a number of dedicated accessories. Although the BS-8C can be used without a processor we recommend that the cabinet presets are applied for a maximum optimization and performance.

Applications: club & bar installations, sound reinforcement, theatres, houses of worship, multi media spaces and public address.



BS-8C

Components	LF: 8" speaker, 1.5" (38.1 mm) copper wire voice coil, waterproof cone with treatment for both sides HF: 1" exit throat, (25 mm) voice coil, PETP dome compression driver
Frequency Range	80 Hz - 18 KHz (± 3 dB)
Sensitivity	94 dB
Max. SPL/ Peak*	116 dB / 122 dB
Rated Power (AES)	150 W AES, 300 W program, 600 W peak
Dispersion	90° x 60° rotatable
Nominal Impedance	8 Ω
Connectors	2 x NEUTRIK Speakon NL4
Finish	Water base paint
Material	15 mm MDF
Dimensions	456 x 255 x 259 mm (H x W x D)
Weight	12 Kg (26.4 lbs)
Fittings	5 x M8, single pole-mount, ergonomic handle on the back position
Shape Enclosure	Multi angle enclosure



- Compact two-way passive cabinet
- Multi-angle enclosure
- 90° x 60° rotatable horn
- Screwless grille with protective acoustic textile
- Integrated ergonomic handle
- Hidden speakon connection
- Top hat for pole mounting
- Multiple installation options, including stage monitor
- Polyurea coating

The BS-10 is a compact, two-way passive cabinet. Consists of a 10" (2" voice coil) LF transducer and a 1" HF driver mounted on a 90° x 60° rotatable horn offering a wide range of applications from fixed installations, frontfill and as a stage monitor.

The 10" driver offers high power handling and high sensitivity with low harmonic distortion and linear response. The cone is waterproof and has been treated on both sides. The 1" HF driver delivers high sensitivity, with a PETP diaphragm.

The cabinet can be complemented by the BS-112 or BS-118 subwoofers and offers tremendous sound and clarity over short/mid distances. Constructed from premium birch plywood and coated in high resistant polyurea paint. The enclosure also offers a screw free grille together with a number of dedicated accessories. Although the BS-10 can be used without a processor we recommend that the cabinet presets are applied for maximum optimization and performance.

Applications: club & bar installations, sound reinforcement, theatres, houses of worship, multi media spaces and public address.



BS-10

Components	LF: 10" speaker, 2" (50 mm) copper wire voice coil, waterproof cone with treatment for both sides HF: 1" exit throat, (25 mm) voice coil, PETP dome compression driver
Frequency Range	65 Hz - 18 KHz (± 3 dB)
Sensitivity	94 dB
Max. SPL/ Peak*	119 dB / 125 dB
Rated Power (AES)	300 W AES, 600 W program, 1200 W peak
Dispersion	90° x 60° rotatable
Nominal Impedance	8 Ω
Connectors	2 x NEUTRIK Speakon NL4
Finish	Polyurea coating high grade resistant paint
Material	15 mm premium birch plywood
Dimensions	505 x 300 x 301 mm (H x W x D)
Weight	14 Kg (30.8 lbs)
Fittings	5 x M8, single pole-mount, ergonomic handle on the back position
Shape Enclosure	Multi angle enclosure



- Compact two-way passive cabinet
- Multi-angle enclosure
- 90° x 60° rotatable horn
- Screwless grille with protective acoustic textile
- Integrated ergonomic handle
- Hidden speakon connection
- Top hat for pole mounting
- Multiple installation options, including stage monitor

The BS-10 is a compact, two-way passive cabinet. Consists of a 10" (1.5" voice coil) LF transducer and a 1" HF driver mounted on a 90° x 60° rotatable horn offering a wide range of applications from fixed installations, frontfill and as a stage monitor.

The 10" driver offers high power handling and high sensitivity with low harmonic distortion and linear response. The cone is waterproof and has been treated on both sides. The 1" HF driver delivers high sensitivity, with a PETP diaphragm.

The cabinet can be complemented by the BS-112 or BS-118 subwoofers and offers tremendous sound and clarity over short/mid distances.

The enclosure also offers a screw free grille together with a number of dedicated accessories. Although the BS-10C can be used without a processor we recommend that the cabinet presets are applied for maximum optimization and performance.

Applications: club & bar installations, sound reinforcement, theatres, houses of worship, multi media spaces and public address.



BS-10

Components	LF: 10" speaker, 1.5" (38.1 mm) copper wire voice coil, waterproof cone with treatment for both sides HF: 1" exit throat, (25 mm) voice coil, PETP dome compression driver
Frequency Range	65 Hz - 18 KHz (± 3 dB)
Sensitivity	94 dB
Max. SPL/ Peak*	117 dB / 123 dB
Rated Power (AES)	200 W AES, 400 W program, 800 W peak
Dispersion	90° x 60° rotatable
Nominal Impedance	8 Ω
Connectors	2 x NEUTRIK Speakon NL4
Finish	Water base paint
Material	15 mm premium birch plywood
Dimensions	505 x 300 x 301 mm (H x W x D)
Weight	14 Kg (30.8 lbs)
Fittings	5 x M8, single pole-mount, ergonomic handle on the back position
Shape Enclosure	Multi angle enclosure



- Compact two-way passive cabinet
- Multi-angle enclosure
- 90° x 60° rotatable horn
- Screwless grille with protective acoustic textile
- Integrated ergonomic handle
- Hidden speakon connection
- Double top hat for pole mounting
- Multiple installation options, including stage monitor
- Polyurea coating

The BS-12 is a compact, two-way passive cabinet. Consists of a 12" (3" voice coil) LF transducer and a 1" HF driver mounted on a 90° x 60° rotatable horn offering a wide range of applications from fixed installations, frontfill and as a stage monitor.

The 12" driver offers high power handling and high sensitivity with low harmonic distortion and linear response. The cone is waterproof and has been treated on both sides. The ultra compact 1" HF driver achieves high sensitivity, with exceptional dynamic range creating remarkable depth and definition.

The cabinet can be complemented by the BS-112 or BS-118 subwoofers and offers tremendous sound and clarity over medium distances. Constructed from premium birch plywood and coated in high resistant polyurea paint. The enclosure also offers a screw free grille together with a number of dedicated accessories. Although the BS-12 can be used without a processor we recommend that the cabinet presets are applied for maximum optimization and performance.

Applications: club & bar installations, sound reinforcement, theatres, houses of worship, multi media spaces and public address.



BS-12

Components	LF: 12" speaker, 3" (75 mm) copper wire voice coil, waterproof cone with treatment for both sides HF: 1" exit throat, (25.4 mm) voice coil, polyester dome compression driver
Frequency Range	60 Hz - 20 KHz (± 3 dB)
Sensitivity	96 dB
Max. SPL/ Peak*	122 dB / 128 dB
Rated Power (AES)	400 W AES, 800 W program, 1600 W peak
Dispersion	90° x 60° rotatable
Nominal Impedance	8 Ω
Connectors	2 x NEUTRIK Speakon NL4
Finish	Polyurea coating high grade resistant paint
Material	15 mm premium birch plywood
Dimensions	589 x 350 x 348 mm (H x W x D)
Weight	19 Kg (41.8 lbs)
Fittings	9 x M6, single pole-mount, ergonomic handle on the back position
Shape Enclosure	Multi angle enclosure



- Compact two-way passive cabinet
- Multi-angle enclosure
- 90° x 60° rotatable horn
- Screwless grille with protective acoustic textile
- Integrated ergonomic handle
- Hidden speakon connection
- Double top hat for pole mounting
- Multiple installation options, including stage monitor
- Polyurea coating

The BS-15 is a compact, two-way passive cabinet. Consists of a 15" (3" voice coil) LF transducer and a 1" HF driver mounted on a 90° x 60° rotatable horn offering a wide range of applications from fixed installations, frontfill and as a stage monitor.

The 15" driver offers high power handling and high sensitivity with low harmonic distortion and linear response. The cone is waterproof and has been treated on both sides. The ultra compact 1" HF driver achieves high sensitivity, with exceptional dynamic range creating remarkable depth and definition.

The cabinet can be complemented by the BS-112 or BS-118 subwoofers and offers tremendous sound and clarity over medium distances. Although the BS-15 can be used without processor we recommend that the cabinet presets are applied for maximum optimization and performance.

Applications: club & bar installations, sound reinforcement, theatres, houses of worship, multi media spaces and public address.



BS-15

Components	LF: 15" speaker, 3" (75 mm) copper wire voice coil, waterproof cone with treatment for both sides HF: 1" exit throat, (25.4 mm) voice coil, polyester dome compression driver
Frequency Range	55 Hz - 20 KHz (± 3 dB)
Sensitivity	98 dB
Max. SPL/ Peak*	124 dB / 130 dB
Rated Power (AES)	400 W AES, 800 W program, 1600 W peak
Dispersion	90° x 60° rotatable
Nominal Impedance	8 Ω
Connectors	2 x NEUTRIK Speakon NL4
Finish	Polyurea coating high grade resistant paint
Material	15 mm premium birch plywood
Dimensions	664 x 425 x 420 mm (H x W x D)
Weight	24 Kg (52.9 lbs)
Fittings	5 x M8, double pole-mount with 10° angle, ergonomic handle on the back position
Shape Enclosure	Multi angle enclosure



- Compact band pass subwoofer cabinet
- Ultra low air noise
- Screwless grille with protective acoustic textile
- Integrated ergonomic handle
- Hidden speakon connection
- Pole mount fitting
- Polyurea coating

The BS-112 is a compact, passive subwoofer cabinet designed to extend low frequency support to the four BS Series full range cabinets.

The 12" (3" voice coil) driver offers high power handling and high sensitivity with low distortion and ultra low air noise. The cone is waterproof and rubber suspension has been treated on both sides and has been optimized for band pass subwoofer applications.

Constructed from premium birch plywood and coated in high resistant polyurea paint. The enclosure also offers a screw free grille together with pole mount fitting so that it can be used with any of the four full range cabinets. We recommend that the cabinet presets are applied for maximum optimization and performance.

Applications: club & bar installations, sound reinforcement, theatres, houses of worship, multi media spaces and public address.



BS-112

Components	LF: 12" speaker, 3" (75 mm) copper wire voice coil, waterproof cone with treatment for both sides
Frequency Range	40 Hz - 90 Hz with preset
Sensitivity	93 dB
Max. SPL/ Peak*	120 dB / 126 dB
Rated Power (AES)	500 W AES, 1000 W program, 2000 W peak
Dispersion	Quasiomnidirectional
Nominal Impedance	8 Ω
Connectors	2 x NEUTRIK Speakon NL4
Finish	Polyurea coating high grade resistant paint
Material	15 mm premium birch plywood
Dimensions	406 x 655 x 400 mm (H x W x D)
Weight	29 Kg (63.9 lbs)
Fittings	2 integrated ergonomic handles, 4 rubber feets right side for vertical install, M-10 fly point
Type Enclosure	Band pass subwoofer



- Compact, direct radiation subwoofer cabinet
- Ultra low air noise
- Screwless grille with protective acoustic textile
- Integrated ergonomic handle
- Hidden speakon connection
- Pole mount fitting
- Polyurea coating

The BS-118 is a compact, passive subwoofer cabinet designed to extend low frequency support to the four BS Series full range cabinets.

The 18" (3" voice coil) driver offers high power handling and high sensitivity with low distortion and ultra low air noise. The cone is waterproof, has been treated on both sides and has been optimized for direct radiation subwoofer applications.

Constructed from premium birch plywood and coated in high resistant polyurea paint. The enclosure also offers a screw free grille together with pole mount fitting so that it can be used with any of the four full range cabinets. We recommend that the cabinet presets are applied for maximum optimization and performance.

Applications: club & bar installations, sound reinforcement, theatres, houses of worship, multi media spaces and public address.

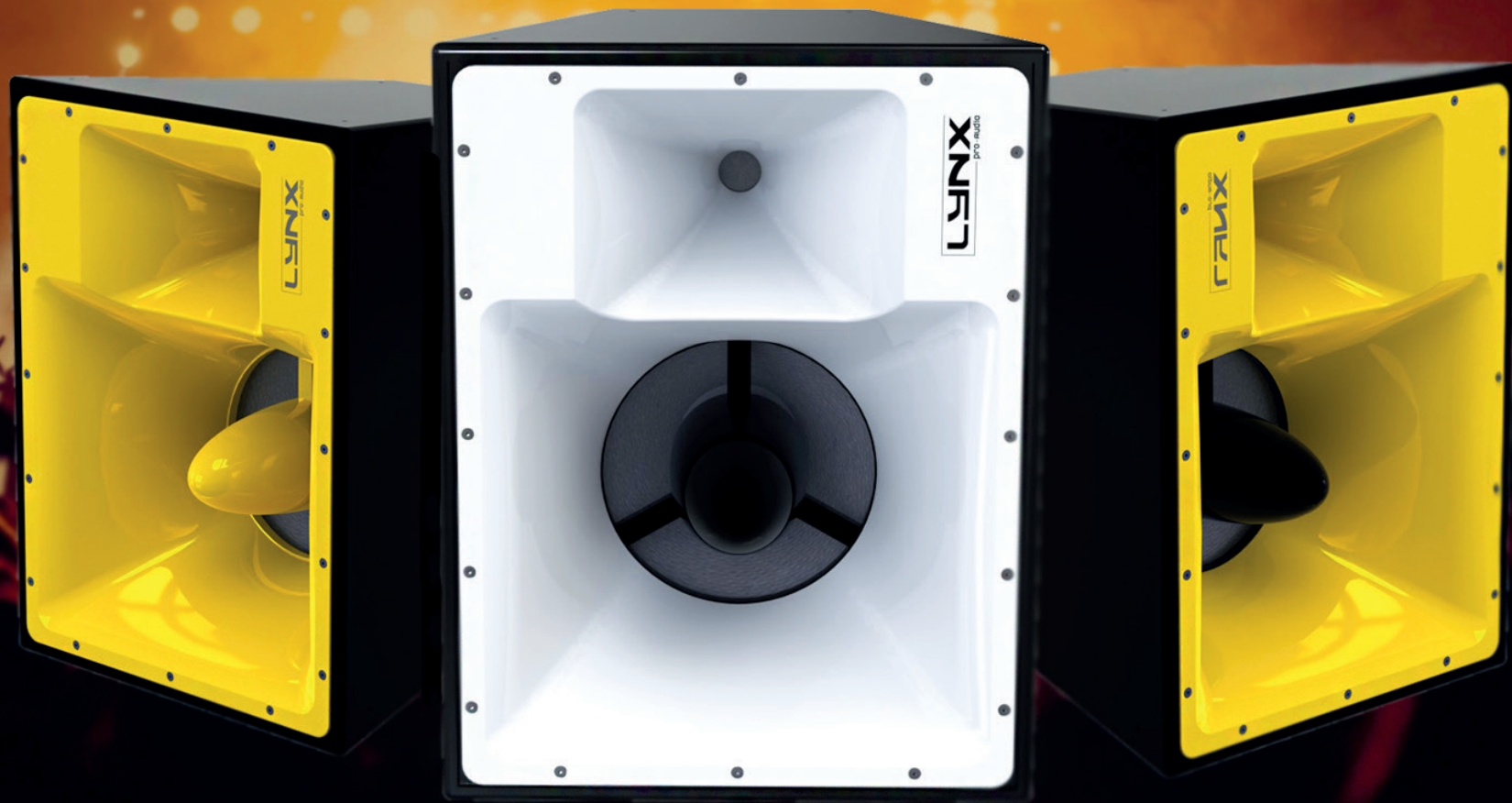


BS-118

Components	LF: 18" speaker, 3" (75 mm) copper wire voice coil, waterproof cone with treatment for both sides
Frequency Range	38 Hz - 100 Hz with preset
Sensitivity	98 dB
Max. SPL/ Peak*	126 dB / 132 dB
Rated Power (AES)	600 W AES, 1200 W program, 2400 W peak
Dispersion	Omnidirectional
Nominal Impedance	8 Ω
Connectors	2 x NEUTRIK Speakon NL4
Finish	Polyurea coating high grade resistant paint
Material	15 mm premium birch plywood
Dimensions	533 x 660 x 570 mm (H x W x D)
Weight	33 Kg (52.9 lbs)
Fittings	2 integrated ergonomic handles, 4 rubber feets right side for vertical install, M-10 fly point
Type Enclosure	Bass reflex direct radiation subwoofer



Urban Planet Jump in Spain
Urban Planet has more than 20 venues in several cities in Spain and are very popular amongst young people. Almost all these Urban Planet rely on the professional sound reinforcement of Lynx Pro Audio. In the facilities you will find over 16 BS-8 cabinets.



DS Series

The DS series offer a full range horn loaded cabinet and a extremely high power sub-bass enclosure, both specifically designed for club and discotheque installs.

Manufactured as standard with premium birch plywood and finished with high-resistant water based black paint it can also be manufactured in any colour or finish to compliment any install design.

The DS cabinets are designed to not only be pleasing to the eye but also to the ear.

They have the special feature that can be made in any colour that you need.

DS-12

Technical Data



- Colour and finishing options
- High performance
- Two way system
- Self powered version optional

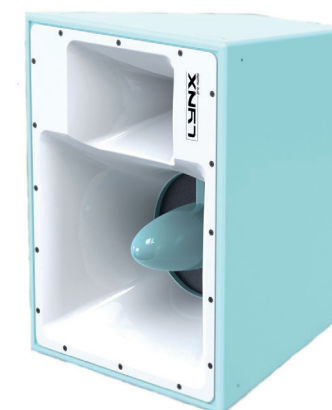
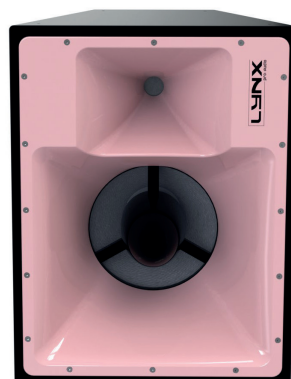
Available in any colour and finish you like, the DS-12 is designed to not only be pleasing to the eye but also to the ear.

The horn loaded, high power DS-12 is primarily designed for installations, especially clubs/discos, is bi-amplified and can also be manufactured as a self-powered version to deliver all the features such as FIR that Lynx Pro audio electronics deliver.



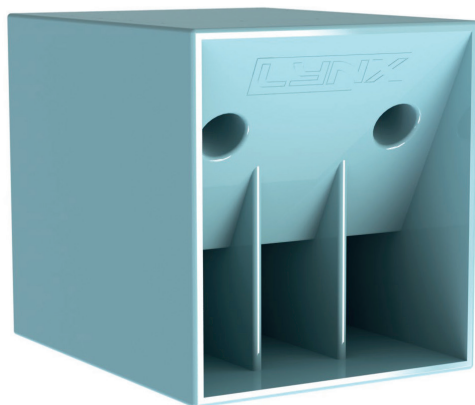
DS-12	
Components	LF/MF 1x12" + 1.4" titanium diaphragm HF driver
Frequency Range	130 Hz – 20 KHz
Frequency Response	150 Hz – 18 KHz (± 3 dB)
Max. SPL	130 dB / 133 dB peak
Coverage Angle	60° H x 40° V
Rated Power	Low/Mid: 500W - High: 60W
Program Power	Low/Mid: 1000W - High: 120W
Crossover	1450 Hz
Nominal Impedance	Low/Mid: 8 Ω - High: 8 Ω
Shape	Trapezoidal
Connectors	2 x Neutrik speakon NL4MP
Construction	15mm Premium birch plywood
Finish	Different colours and finishing options
Dimensions	649 x 499 x 482 mm (H x W x D)
Weight	32 Kg (70 lbs)

Available in any colour and finish you like



DS-18S

Technical Data



- Incredible power to size ratio
- Colour and finishing options
- High performance 1400 W

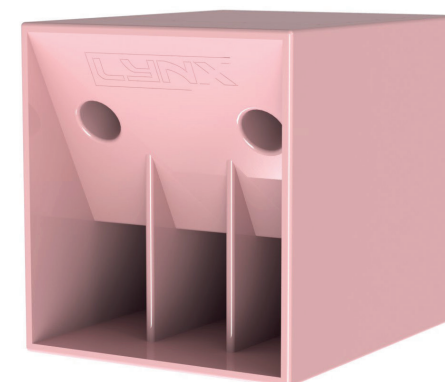
The DS-18S is an extremely high power subwoofer cabinet providing exceptional low frequency reinforcement for the DS-12. It uses one 18" (4" DUO voice coil) transducer with aluminium demodulating ring in direct radiation bass reflex configuration.

It can also be manufactured in any colour or finish to compliment any install design.



DS-18S	
Components	LF 1 x 18"
Frequency Range	30 Hz - 250 Hz
Frequency Response	35 Hz - 200 Hz (± 3 dB)
Max. SPL	133 dB / 136 dB peak
Coverage	360° single unit
Rated Power	1400 W
Program Power	2800 W
Nominal Impedance	8 Ω
Construction	18 mm Premium Birch plywood
Finish	Different colours and finishing options
Dimensions	639 x 585 x 733 mm (H x W x D)
Weight	42 Kg (92 lbs)

Available in any colour and finish you like





MYA Club in Valencia, Spain

MYA is a nightclub with an elegant concept located in El Umbracle, in a privileged area of the city. Lynx Pro Audio placed eight DS-12 speakers and twelve DS-18S in the BEATS room.



QB Series

The QB series comprises one two-way, passive full range cabinet and one subwoofer and is the smallest series that Lynx Pro Audio offers, designed and intended for background sound reinforcement where the power of the HR or BS series is not required.

The components have been carefully selected to offer a lightweight, versatile series, delivering a linear phase response with excellent sound distribution and fidelity for background installations in bars, restaurants, conferences etc.

The Full Range cabinet is supplied with high frequency OCPP protection (over current passive protection) whilst the subwoofer model comes with SWR (stationary wave reduction) to reduce internal stationary waves.

Both cabinets are finished in rugged, premium birch plywood with a polyurea coating. The QB-5 is protected by front steel grills and backed with a special dark grey triple layer, acoustical textile which allows greater air flow and reduces heat and humidity.

QB-5



- Ultra- compact Light weight
- Background sound reinforcement
- Line transformer optional
- ARK optimised preset
- White & black colour optional
- Rugged design

QB-5

Components	LF 1 x 5" transducer HF 1 x 1" tweeter
Frequency Range	65 Hz – 20 KHz (-10 dB)
Frequency Response	75 Hz – 18 KHz (±3 dB)
Sensitivity	88 dB (1W @ 1m)
Max. SPL	107 dB - 113 dB peak
Rated Power (AES)	80 W (160 W program, 320 W peak)
Coverage Angle	90°H x 90°V conic
Impedance	16 Ω
Input Connectors	2 x Neutrik Speakon NL4MP
Material	10 mm DM
Finish	Polyurea coating paint. Black steel grill with acoustic fabric protection
Dimensions	254 x 167 x 186 mm (H x W x D)
Weight	3 kg (6.6 lbs)

SUB-08



- Ultra- compact Light weight
- Background sound reinforcement
- ARK optimised preset
- White & black colour optional
- High quality component
- It can be used with the QB-5 to extend the low frequency support

SUB-08

Components	LF 1 x 8" transducer (2 x 50mm voice coil)
Frequency Range	43 Hz – 160 Hz (-10 dB)
Frequency Response	47 Hz – 154 Hz (±3 dB)
Sensitivity	93 dB (1W @ 1m)
Max. SPL	116 dB - 122 dB peak
Rated Power (AES)	200 W (400 W program, 800 W peak)
Coverage Angle	360° single unit
Impedance	2 x 8 Ω
Input Connectors	2 x Neutrik Speakon NL4MP
Material	15mm Premium birch plywood
Finish	Polyurea coating paint
Dimensions	268 x 641 x 304 mm (H x W x D)
Weight	9 kg (20 lbs)





Àtic Alameda in Valencia, Spain

A gastronomic spot that offers two different experiences in the same space: casual and gourmet. The venue is equipped with QB series cabinets.

Weather-resistant, two-way full range loudspeakers for indoor/outdoor applications
Certified IP 46 rating
Line transformer available

Juno Series

The Juno Series are weather-resistant, two-way full range loudspeakers.

The Juno series comprises one 6" mid-woofer with one 1" HF driver (JN-6) and one 8" mid-woofer with one 1" HF driver (JN-8). Both are available with a line transformer (JN-6T and JN-8T).

High durability and superior performance with full sound over a large listening area.

These cabinets have a sturdy structure and IP rated system which can be used both indoors and outdoors, being able to withstand the elements. Also, their elegant and discreet design make them the ideal speaker for outdoor installations such as beach clubs, pools, cruise ships and terraces.

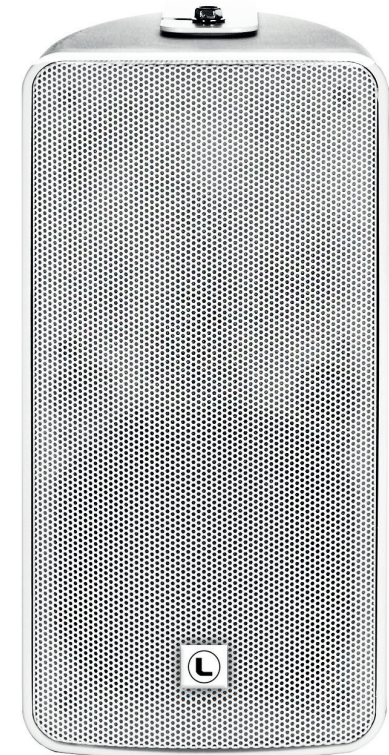
Juno series can be set up either vertically or horizontally. The body is made of engineered plastic injection moulding and polypropylene, guaranteeing complete protection against ultraviolet rays.

The grille is perforated aluminium, internally covered in waterproof fabric and open cell expanded polyurethane.

The system conforms to IP46 international standard. JN-6T and JN-8T cabinets are equipped with multi-tap transformer.



JN-6



JN-8



- Indoor or outdoor application
- Weather resistant IP46 rating
- Tested to withstand snow, rain and salt
- Engineering plastic injection molding
- UV rays protection
- Vertically and horizontally mounting
- Internal waterproof fabric
- Available in black or white colour

Includes accessories:

- Silicone washers
- U Bracket with stainless steel screws
- Safety cable
- Plastic cover with gland connector
- Euroblock input connector

Applications:

- Meeting rooms
- Commercial centers
- Outdoor background music
- Water parks & pools
- Beach clubs
- Cruise ships

	JN-6	JN-6T	JN-8	JN-8T
Frequency response(-3dB)	60Hz-18KHz	60Hz-18KHz	60Hz-18KHz	60Hz-18KHz
Frequency response(-10dB)	55Hz-20KHz	55Hz-20KHz	55Hz-20KHz	55Hz-20KHz
Drivers	1×6"(150mm) / 1.5"voice coil LF 1×1"(25mm) / 1"voice coil HF	1×6"(150mm) / 1.5"voice coil LF 1×1"(25mm) / 1"voice coil HF	1×8"(200mm) / 2"voice coil LF 1×1"(25mm) / 1"voice coil HF	1×8"(200mm) / 2"voice coil LF 1×1"(25mm) / 1"voice coil HF
Rated power	80W RMS, 320W peak	20W / 40W / 80W / OFF / 16Ω	150W RMS, 600W peak	37.5W / 75W / 150W / OFF / 16Ω
Sensitivity	89dB 1W/1 m	89dB 1w/1 m	94dB 1w/1 m	94dB 1w/1 m
Maximum SPL	110dB / 116 dB peak	110dB / 116 dB peak	116dB / 122 dB peak	116dB / 122 dB peak
Impedance	16 Ω nominal	16 Ω nominal	16 Ω nominal	16 Ω nominal
Dispersion(-6db)	90°×60°	90°×60°	90°×50°	90°×50°
Crossover frequencies	2.4kHz passive	2.4kHz passive	2.3kHz passive	2.3kHz passive
Input connectors	covered barrier strip terminals	covered barrier strip terminals	covered barrier strip terminals	covered barrier strip terminals
Package size	524×242×417mm (1 pair)	524×242×417mm (1 pair)	370×310×525mm	370×310×525mm
Net weight	5.5 kg/pc	6.5 kg/pc	9 kg/pc	10 kg/pc
Gross weight	14 kg/pair	15.5 kg/pair	11 kg/pc	12 kg/pc

CS Series

The CS series comprises one two-way in-ceiling mount loudspeakers and one in-ceiling subwoofer. This is the first in-ceiling series that Lynx Pro Audio offers, designed and intended for voice and background sound reinforcement.



CS-6T

Components	6" 165 mm polypropylene cone 0.5" polypropylene Tweeter coaxially mounted
Frequency Range	90 – 18.000 Hz
Rated power	40W (8 Ω) 160W Peak
Transformer taps	100V 30 / 15 / 7.5 / 3.75W 70V 30 / 15 / 7.5 / 3.75 / 1.9W Low Impedance 8Ω
Max. SPL	8Ω 105 dB 100V / 70V 104dB
Sensitivity	89dB 1W / 1m @ Zn
Nominal impedance	8 Ω
Nominal coverage	90° Conical Dispersion
Recommended signal processing	90 Hz, at 24 dB per octave high pass filter
Crossover frequency	2500 Hz
Enclosure material	ABS
Grille	Powder coated steel, white finish, paintable
Colour	White
Dimension	139 mm x 239 mm (5,5 in x 9,4 in)
Cut out size	205 mm (8.1 in)
Net weight	2 kg (4.4 lbs)

Technical Data



CS-8SUB

Components	8" 200 mm polypropylene cone
Frequency Range	60-150Hz (-10dB)
Rated power	80W (8 Ω) 220W Peak
Transformer taps	100V 50 / 25W 70V 50 / 25 / 12.5W Low Impedance 8Ω
Max. SPL	8Ω 109 dB 100V / 70V 107dB
Sensitivity	90dB 1W / 1m @ Zn
Nominal impedance	8 Ω
Nominal coverage	180°
Recommended signal processing	40 Hz, at 24 dB per octave high pass filter
Crossover frequency	150 Hz
Enclosure material	ABS
Grille	Powder coated steel, white finish, paintable
Colour	White
Dimension	177 mm x 280 mm (6,9 in x 11 in)
Cut out size	245 mm (9.6 in)
Net weight	4Kg (8.8 lbs)

IXP Series

Technical Data

The IXP series offers a high power in-ceiling speakers range designed and intended for voice and background sound reinforcement. Consists of two coaxial two-way speakers and one subwoofer.



IXP-4



IXP-6



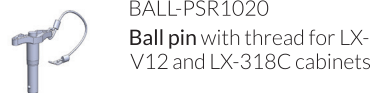
IXP-8SUB

	IXP-4	IXP-6	IXP-8SUB
Components	4" 100mm polypropylene cone	6.5" 165 mm polypropylene cone with rubber suspension / 0.75" milar Tweeter coaxially mounted with conical horn	8" 200 mm polypropylene cone
Frequency Range	90 – 20.000 Hz	80 – 20.000 Hz	50 – 200 Hz
Rated power	30W (8 Ω) 120W Peak	50W (8 Ω) 200W Peak	80W (8 Ω) 320W Peak
Transformer taps	100V 30 / 15 / 7.5 / 3.75W 70V 30 / 15 / 7.5 / 3.75 / 1.9W Low Impedance 8Ω	100V 50 / 25 / 12.5 W 70V 50 / 25 / 12.5 / 6.25 W Low Impedance 8Ω	100V 50 / 25 / 12.5 W 70V 50 / 25 / 12.5 / 6.25 W Low Impedance 8Ω
Max. SPL	8Ω 102 dB 100V / 70V 102dB	8Ω 107 dB / 113 dB 100V / 70V 107 dB / 113 dB	8Ω 110 dB / 116 dB 100V / 70V 107 dB / 113 dB
Sensitivity	87 dB 1W / 1m @ Zn average 400 Hz to 8KHz	90 dB 1W / 1m @ Zn average 400 Hz to 8KHz	90 dB 1W / 1m @ Zn average 60 Hz to 110 Hz
Nominal impedance	8 Ω		
Nominal coverage	100° Conical Dispersion	100° Conical Dispersion	180°
Recommended signal processing	100 Hz, at 24 dB per octave high pass filter	80 Hz, at 24 dB per octave high pass filter	40 Hz, at 24 dB per octave high pass filter
Crossover frequency	5500 Hz 12dB/octave HP/LP filter	5500 Hz 12dB/octave HP/LP filter	180 Hz 12dB/octave HP/LP filter
Input connection	4 poles Euroblock connector with loop-through		
Enclosure material	Baffle ABS, backcan steel black finish		
Grille	Powder coated steel, white finish, paintable		
Controls	Front-face wattage / low impedance selector switch		
Mounting / rigging provisions	4 Rotating Mounting tabs (dog ears)		
Dimensions H x Diameter	188 mm x 204.5 mm (7.4 in x 8 in)	239 mm x 264 mm (9.4 in x 10.3 in)	248 mm x 320 mm (9.7 in x 12.5 in)
Cut out size	168 mm (6.6 in)	221 mm (8.7 in)	285 mm (11.2 in)
Net weight	2.6 Kg (5.7 lbs)	3.8 Kg (8.3 lbs)	5.62 Kg (12.3 lbs)

Accessories by product series

Accessories LX Series

LX-V12



BALL-PSR1020
Ball pin with thread for LX-V12 and LX-318C cabinets



CA-LXV12
Transport dolly for up to 4 LX-V12



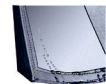
ST-LX318CV
Connection system to link LX-V12 with sub LX-318C



SV-LXV12
Aluminium flying frame for the LX-V12. You can use this frame for ground stack or rigging of up to 24 cabinets.



FD-4LXV12
Nylon protection cover for either 4 LX-V12 cabinets



FD-1LXV12NL
Rain cover for the back panel of the LX-V12

LX-318C



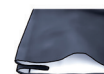
BALL-PSR1020
Ball pin with thread for LX-V12 and LX-318C cabinets



ST-LX318CV
Connection system to link LX-318C with line array cabinets LX-V12 or LX-V8



SV-LXV318C
Flying frame for the LX-318C



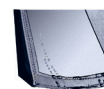
FD-2LX318C
Nylon protection cover for 2 LX-318C cabinets



CA-LX318C
Transport dolly for up to 3 LX-318C



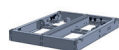
KV-318C
4 piece adaptor kit for flying LX-318C



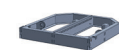
FD-1LX318CNL
Rain cover for the back panel of the LX-318C

Accessories CLS Series

CLS-28



SV-CLS10
Flying frame for 16 CLS-28 or CLS-118S. Max. 600 Kg



SV-CLS10 Lite
Flying frame for 16 CLS-28. Max. 600 Kg



FD-CLS28
Rain cover for CLS-28



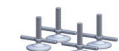
SC-CLS212/28
Connection system for CLS-212 together with CLS-28



SC-CLS28/118S
Connection system for CLS-28 together with CLS-118S



ST-SVCLS/M20
Kit to connect SV-CLS10 or SV-CLS20 flying frame and M20 plate



ST-CLSKIT
4x ground stack stabilisers for SV-CLS10



FC-4CLS28
Flight case to transport 4 CLS-28

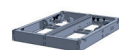


FC-SVCLS10
Flight case to transport 2 SV-CLS10, cables and accessories



BALL-PSR0820
Ball pin with thread for CLS-28 cabinet and CLS-118S

CLS-118S



SV-CLS10
Flying frame for 16 CLS-28 or CLS-118S. Max. 600 Kg



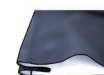
SC-CLS28/118S
Connection system for CLS-28 together with CLS-118S



ST-SVCLS/M20
Kit to connect SV-CLS10 or SV-CLS20 flying frame and M20 plate

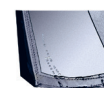


CA-CLS118S
Removable front transport dolly



FD-CLS118S
Nylon cover for CLS-118S with a CA-CLS118S

FD-2CLS118S
Nylon cover for 2 CLS-118S with a CA-CLS118S/2



FD-CLSSUBNL
Rain cover for CLS-118S / CLS-121S / CLS-218S



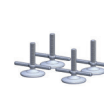
BALL-PSR0820
Ball pin with thread for CLS-28 cabinet and CLS-118S



FC-SVCLS10
Flight case to transport 2 SV-CLS10, cables and accessories

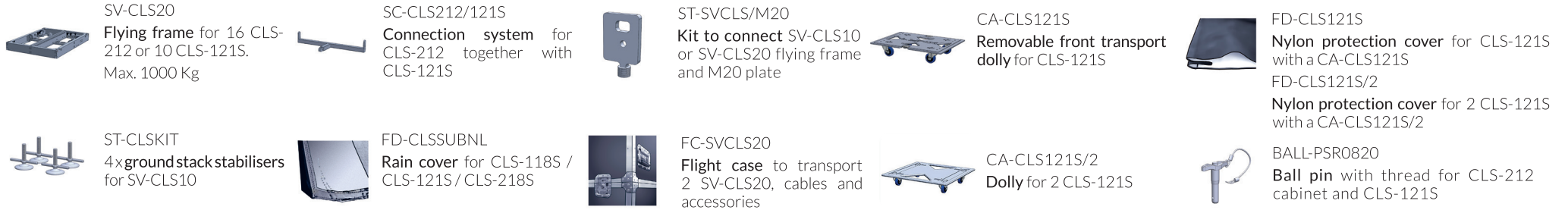


CA-CLS118S/2
Dolly for 2 CLS-118S



ST-CLSKIT
4x ground stack stabilisers for SV-CLS10

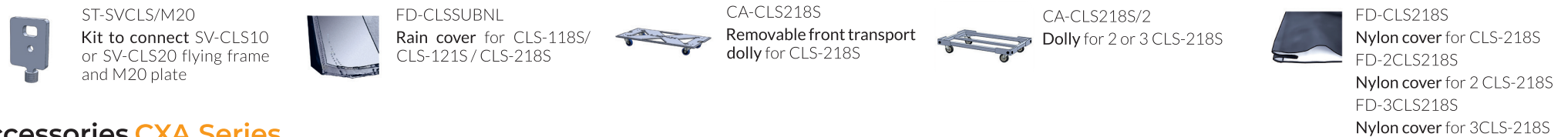
CLS-121S



CLS-212



CLS-218S

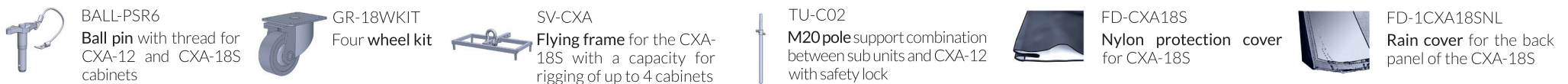


Accessories CXA Series

CXA-12



CXA-18S



Accessories ADP Series

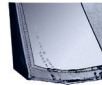
ADP-215



SF-CF2
Heavyweight install stud
for the ADP-215



SP-LXADP
Connection plate for
ADP-215 to vertical LX-
218S



FD-ADP215NL
Rain cover for the ADP-
215



FD-ADP215
Nylon protection cover for
the ADP-215 cabinets

ADP-15



CS-1215
Cluster support for ADP-
15



TU-C01
35mm **connecting pole**
for satellite combination
between sub units and
ADP-15



TU-C02
M20 pole support
combination between sub
units and ADP-15. With
safety lock



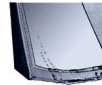
VSM-V1
35mm speaker mounting
top hat for ADP-15 with the
ADP-18S or ADP-12S



SB-02
35mm **lightweight
aluminium stand** for the
ADP-15



SC-FC1
Lightweight install stud
for the ADP-15



FD-ADP15NL
Rain cover for ADP-15



WB-03
Wall bracket for the ADP-
15 for top hat insertion

ADP-12



CS-1215
Cluster support for ADP-
12



TU-C01
35mm **connecting pole**
for satellite combination
between sub units and
ADP-12



TU-C02
M20 pole support
combination between sub
units and ADP-12. With
safety lock



VSM-V1
35mm speaker mounting
top hat for ADP-12 with the
ADP-18S or ADP-12S



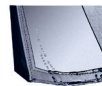
SB-02
35mm **lightweight
aluminium stand** for the
ADP-12



SC-FC1
Lightweight install stud
for the ADP-12



WB-03
Wall bracket for the ADP-
12 for top hat insertion



FD-ADP15NL
Rain cover for ADP-12

ADP-26



AGR-6
M6 eye bolt for the ADP-
26



TU-C01
35mm **connecting pole**
for satellite combination
between sub units and
ADP-26



TU-C02
M20 pole support
combination between sub
units and ADP-26. With
safety lock



WB-03
Wall bracket for the ADP-26
for top hat insertion



SB-02
35mm **lightweight
aluminium stand** for the
ADP-26



SC-FC1
Lightweight install stud
for the ADP-26



VSM-V1
35mm speaker mounting
top hat for ADP-26 with the
ADP-18S or ADP-12S

ADP-212M



FC-212M
Flight case to transport one
stage monitor ADP-212M

ADP-12M



FC-212M

Flight case to transport one stage monitor ADP-212M

ADP-12S



TU-C01

35mm connecting pole for satellite combination between ADP-12S and ADP full range cabinets



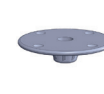
TU-C02

M20 pole support combination between ADP-12S and ADP-15/ ADP-12/ ADP-26. With safety lock



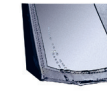
VSM-V1

35mm speaker mounting top hat for satellite combination between ADP-12S and ADP full range cabinets



VSM-V2

M20 connector plate for the ADP-12S



FD-ADP12SNL

Rain cover for ADP-12S

ADP-18S



TU-C01

35mm connecting pole for satellite combination between ADP-18S and ADP full range cabinets



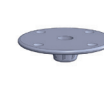
TU-C02

M20 pole support combination between ADP-18S and ADP-15/ ADP-12/ ADP-26. With safety lock



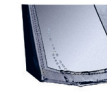
VSM-V1

35mm speaker mounting top hat for satellite combination between ADP-18S and ADP full range cabinets



VSM-V2

M20 connector plate for the ADP-18S



FD-ADP18SNL

Rain cover for ADP-18S

Accessories GXR Series

GXR-LA10A



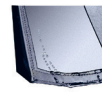
CA-GXRLA10

Transport dolly for GXR-LA10A



GXR-GSKIT

Ground stack kit to stack GXR-LA10A directly or together with the GXR-D18S



FD-GXRLA10NL

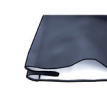
Rain cover for the back panel of the GXR-LA10A



SV-GXR

Flying frame and stacking system for GXR-LA10A/ GXR-D15A

You can use this frame for ground stack or rigging



FD-GXRLA10

Nylon protection cover for either 4 GXR-LA10A cabinets



BALL-PSR0820

Ball pin with thread for GXR-LA10A cabinet and GXR-D15A

GXR-D15A



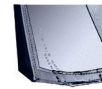
CA-GXRD15

Transport dolly for GXR-D15A



FD-GXRD15/2 & FD-GXRD15/3

Nylon protection cover for 2 or 3 GXR-D15A subwoofers



FD-GXRD15NL

Rain cover for the back panel of the GXR-D15A



SV-GXR

Flying frame and stacking system for GXR-LA10A/ GXR-D15A

You can use this frame for ground stack or rigging



GR-18WKIT

Wheel kit for subwoofer GXR-D15A and GXR-D18A



BALL-PSR0820

Ball pin with thread for GXR-LA10A cabinet and GXR-D15A

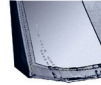
GXR-D18A



CA-GXRD18
Transport dolly for GXR-D18A



FD-GXRD18/2 & FG-GXRD18/3
Nylon protection cover for 2 or 3 GXR-D18A subwoofers



FD-GXRD18NL
Rain cover for the back panel of the GXR-D18A



GR-18WKIT
Wheel kit for subwoofer GXR-D15A and GXR-D18A

GXR-215



AGR-10
M10 eye bolt for the GXR-215



FD-GXR215
Nylon protection cover for the GXR-215

GXR-15



AGR-10
M10 eye bolt for the GXR-15



TU-C01
35mm **connecting pole** for satellite combination between sub units and GXR-15



TU-C02
M20 pole support combination between sub units and GXR-15. With safety lock



FC-GXR15
Flight case for the GXR-15



SB-02
35mm **lightweight aluminium stand** for the GXR-15



WB-03
Wall bracket for the GXR-15 for top hat insertion



FD-GXR15
Nylon protection cover for the GXR-15

GXR-12



AGR-10
M10 eye bolt for the GXR-12



TU-C01
35mm **connecting pole** for satellite combination between sub units and GXR-12



TU-C02
M20 pole support combination between sub units and GXR-12. With safety lock



FC-GXR12
Flight case for 2 GXR-12



SB-02
35mm **lightweight aluminium stand** for the GXR-12



WB-03
Wall bracket for the GXR-12 for top hat insertion



FD-GXR12
Nylon protection cover for the GXR-12

GXR-18S



GR-18WKIT
Wheel kit for GXR-18S



FD-GXR18S
Nylon protection cover for GXR-18S



TU-C01
35mm **connecting pole** for satellite combination between sub units and GXR-12



TU-C02
M20 pole support combination between sub units and GXR-12. With safety lock

Accessories HR Series

HR-6



AGR-6
M6 eye bolt for HR-6



WB-10
Wall bracket for HR-6



UBR-HR6
U bracket for HR-6

HR-8



AGR-10
M10 eye bolt for HR-8



WB-20
Wall bracket for HR-8



UBR-HR8
U bracket for HR-8

HR-1564/7 & HR-1596/7



AGR-10
M10 eye bolt for HR-1564/7 & HR-1596/7 cabinets



SC-FC1
Lightweight install stud for HR-1564/7 & HR-1596/7



SC-FC2
Heavyweight install stud for HR-1564/7 & HR-1596/7

HR-1264/7 & HR-1296/7



AGR-10
M10 eye bolt for HR-1264/7 & HR-1296/7 cabinets



SC-FC1
Lightweight install stud for HR-1264/7 & HR-1296/7



SC-FC2
Heavyweight install stud for HR-1264/7 & HR-1296/7

HR-1564/5 & HR-1596/5



AGR-10
M10 eye bolt for HR-1564/5 & HR-1596/5 cabinets



AGR-10
M10 eye bolt for HR-1264/5 & HR-1296/5 cabinets

HR-28



AGR-10
M10 eye bolt for HR-1564/5 & HR-1596/5 cabinets



UBR-28
Bracket for the HR-28



AGR-10
M10 eye bolt for HR-1264/5 & HR-1296/5 cabinets



UBR-26
Bracket for the HR-26

HR-215S



TU-C01
35mm connecting pole for satellite combination between HR-215S and HR full range cabinets



TU-C02
M20 pole support combination between HR-215S and HR full range cabinets. With safety lock



VSM-V1
35mm speaker mounting top hat for satellite combination between HR-215S and HR full range cabinets



VSM-V2
M20 connector plate for the HR-215S

Accessories Ionic Series

Ionic 100



SV-12S
Sub adaptor for satellite



SV-23
Piece to connect 2 columns together – straight



SV-21
Column cabinets connection



SV-POLE
35mm inclinable pole adaptor



WB-20
Wall bracket for column installation – inclinable



SV-22
Piece to connect columns to wall or truss



SV-IONIC
Flying frame for column array



FC-IONIC
Flight case for 2 Ionic-100 plus accessories

Ionic 50



SV-12S
Sub adaptor for satellite



SV-23
Piece to connect 2 columns together – straight



SV-21
Column cabinets connection



SV-POLE
35mm inclinable Pole adaptor



WB-20
Wall bracket for column installation – inclinable



SV-22
Piece to connect columns to wall or truss



SV-IONIC
Flying frame for column array



FC-IONIC
Flight case for 4 Ionic-50 plus accessories

Ionic 5CX



SP-5CX
35mm speaker pole to 3/8" male thread



UBR-5CX
Wall bracket for the Ionic-5CX

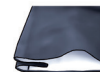


MS-5CX
Quick Coupler for 3/8" to 5/8" stand

Ionic 12S



TU-C02
M20 pole support for combination between sub and satellite cabinet



FD-IONIC12S
Nylon protection cover for Ionic 12S



VSM-V2
M20 connector plate for M20 pole support TU-C02

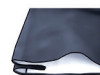
Ionic 18S



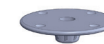
SV-12S
Sub adaptor for satellite



TU-C02
M20 pole support for combination between sub and satellite cabinet



FD-IONIC18S
Nylon protection cover for Ionic 18S



VSM-V2
M20 connector plate for M20 pole support TU-C02



GR-18WKIT
Wheel kit for IONIC-18S

Accessories **BS Series**

BS-8 / BS-8C



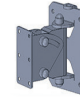
AGR-8
M8 eye bolt for the BS-8



SB-02
Lightweight aluminium stand for the BS-8



TU-C02
M20 pole support for combination between sub and satellite cabinet



WB-20
Wall bracket for BS-8



UBR-BS8
U bracket for BS-8

BS-10 / BS-10C



AGR-8
M8 eye bolt for the BS-10



SB-02
Lightweight aluminium stand for the BS-10



TU-C02
M20 pole support for combination between sub and satellite cabinet



WB-20
Wall bracket for BS-10



UBR-BS10
U bracket for BS-10

BS-12



AGR-8
M8 eye bolt for the BS-12



SB-02
Lightweight aluminium stand for the BS-12



TU-C02
M20 pole support for combination between sub and satellite cabinet



WB-20
Wall bracket for BS-12



UBR-BS12
U bracket for BS-12

BS-15



AGR-8
M8 eye bolt for the BS-15



SB-02
Lightweight aluminium stand for the BS-15



TU-C02
M20 pole support for combination between sub and satellite cabinet



WB-20
Wall bracket for BS-15



UBR-BS15
U bracket for BS-15

BS-112



AGR-10
M10 eye bolt for the BS-112



TU-C02
M20 pole support for combination between sub and satellite cabinet

BS-118



AGR-10
M10 eye bolt for the BS-118



TU-C02
M20 pole support for combination between sub and satellite cabinet

Accessories **QB Series**

QB-5



WB-10
Wall bracket for QB-5



UBR-QB5
U bracket for QB-5



ARK processors

Digital processors designed, assembled and manufactured by Lynx Pro Audio to be easily configured providing optimum sound and results in both fixed installation and touring.

Digital processors offering 7 different models with 2 or 4 inputs each and with up to 8 outputs (analogue or digital and Ethersound optional).



ARK-20 model



ARK-70 model



ARK7024



ARK7044



ARK7026



ARK7048

- Double Dynamics (RMS and Peak) are standard in all ARK-70 models. These double dynamics lower levels of distortion and provide protection for all the speaker components and internal electronics.

- All ARK units deliver a wide dynamic range of 120dB, high performance Cirrus Logic AD & DA 24-bit converters running at 96kHz. The internal DSP processing works with double precision in floating point, achieving an internal resolution of 56 bits, one of the largest resolutions available on the market today.

- Each input has up to 29 filters of Parametric EQ which can be switched to Graphic EQ. Each output also has Parametric EQ which can be chosen between adaptable or constant Q, All Pass, Band Pass, Notch, HP Q, LP Q or High and low Shelves providing flexibility.

Moreover, crossover filters with high and low cuts of Linkwitz Riley, Bessel, Butterworth upto 48 dB/oct slopes in 6 dB steps are available. A 6 dB/octave slope, for instance, corresponding to a first order filter, allows for frequency shading.

- With 0.6ms fixed latency the ARK-70 is one of the lowest latency processors available.

- ARK software has been designed for fast user access to make each processing zone simpler for the user. The Compare function option enables the user to listen to the difference between 2 complete set ups in real time with no fade-ins or fade-outs.

As well as being able to import measurement curves from the principal systems (SMAART LIVE, CLIO, SAT Live etc), they can also be seen directly in the final frequency response window showing the effects of the process applied. All ARK processors can be configured and monitored in real time by USB or Ethernet.

- The ARK-70 offer atmospheric compensation – essential when working outdoors where temperature and humidity varies considerably between night and day causing noticeable loss in high frequency, especially at long distances. Each output can be configured separately depending on the throw required from each cabinet.

- Other features include advanced security features, polarity, gain and delay on ins and outs, routing of any input to any output and a signal generator with sine and noise (pink or white).

Input	2 or 4 Impedance: 20 K Ohm Balanced (10 K Ohm unbalanced). Connector: Balanced XLR (pin 2 +). AD converter: 24 bit-192KHz, 512x Oversampling. Dynamic Range: 120 dB. Max. level: +19 dBu (balanced). Digital AES/EBU: Optional.	General	Power supply 85-240 V ~ 40-400 Hz. IEC connector. (Switching power supply, wide range). Consumption 30 W. Operating temperature: -5° to 60° C (23° to 140° F). Storage temperature: -60° to 75° C (-76° to 167° F). Humidity: Max. 90% non-condensing. Dimensions 482 x 45 x 226 mm. Weight 3 Kg Warranty 3 years
Outputs	4, 6 or 8 Impedance: 50 Ohm Balanced (25 Ohm unbalanced). Connector: Balanced XLR (pin 2 +). DA converter: 24 bit-192KHz, 512x Oversampling. Dynamic Range: 120 dB. Max. level: +18 dBu (balanced). Digital AES/EBU: Optional.	Front Panel	Display: LCD with 24 x 2 characters. Encoders: 3. Buttons: Navigator with 5 backlight buttons. 12 buttons for Edition and Mute with light indications. Level Meter: 7 leds per input/output, -40db, -6db, 0db, +6db, +12db, Limit, Over Limit.
Ethersound	Optional	Latency	0.6 ms
Audio	Frequency Range 10 Hz – 24 KHz. THD (%) <0,0018%. DSP Process Internal resolution with 56 bit double precision in floating point. Converters 24 bit resolution. Propagation Delay: 0.6 milliseconds.	Level control	Gain +6dBu to -40 dBu per input / output. Mute per input / output.Phase inversion per input / output. Possibility to Link Controls.
Equalisation	Input GEQ / PEQ: 29 GEQ Bands or 29 parametric filters per input. PEQ Output: PEQ Type filters Parametric, Shelving High, Shelving Low, Low-Pass, High-Pass, Low-Pass Q variable, High-Pass Q variable, BandPass, Reject Band, AllPass order 1, AllPass order 2. Possibility to Link filters between Input and Outputs.	Security options	Password global. Level 0: No restrictions. Level 1: Only allows preset to changes. Level 2: Only allows mute modification. Level 3: Only allows preset to changes and mute modification. Level 4: Blocks all the front panel controls. Restricted Zones: For each Preset it is possible to disable the access to any processor function (EQ, crossover, Limiter, etc) writing a reset password.
Crossover	Linkwitz Riley with 12, 24, 48 dB/oct. Butterworth and Bessel with 6, 12, 18, 24, 30, 36, 42 and 48 dB/oct.	Communication	USB. Ethernet.
Delay	Input: 190 milisec. (channels A & B) / 54 milisec. (C & D) Output: 20.8 milisec for Speaker alignment. Possibility to Link Delays.	Noise Gate	1 per Output. Noise Threshold: -79dBu to -37dBu.
RMS Limiter-Compressor	1 per output. Threshold: +18dBu to -50dBu. Compression Ratio: 1:1 to 1:10 (1:infinite with limiter). Power indication: Shows the maximum power applied to the speaker for the selected threshold.	Peak Limiter	1 per output. Threshold: +18dBu to -50dBu. Peak Indication: Shows the maximum peak Voltage applied to the speaker for the selected threshold.
Signal Generator	Level 0dBu to -40dBu. Type: sine tone from 10Hz to 22KHz, Pink noise, White noise.	Other functions	Atmospheric compensation by Air absorption. Process Integration with RAINBOW – The acoustical prediction software. Speaker data import from main audio measurement systems. Export & Import EQ files. Etc.



ARK2048



ARK2024



ARK2026

- Double Dynamics (RMS and Peak) are standard in all ARK-70 models. These double dynamics lower levels of distortion and provide protection for all the speaker components and internal electronics.

- All ARK units deliver a wide dynamic range of 120dB, high performance Cirrus Logic AD & DA 24bit converters running at 96kHz. The internal DSP processing works with double precision in floating point, achieving an internal resolution of 56 bits, one of the largest resolutions available on the market today.

- Each input has up to 29 filters of Parametric EQ which can be switched to Graphic EQ. Each output also has Parametric EQ which can be chosen between adaptable or constant Q, All Pass, Band Pass, Notch, HP Q, LP Q or High and low Shelves providing flexibility.

Moreover, crossover filters with high and low cuts of Linkwitz Riley, Bessel, Butterworth upto 48 dB/oct slopes in 6 dB steps are available. A 6 dB/octave slope, for instance, corresponding to a first order filter, allows for frequency shading.

- With 0.6ms fixed latency the ARK-70 is one of the lowest latency processors available.

- ARK software has been designed for fast user access to make each processing zone simpler for the user. The Compare function option enables the user to listen to the difference between 2 complete set ups in real time with no fade-ins or fade-outs.

As well as being able to import measurement curves from the principal systems (SMAART LIVE, CLIO, SAT Live etc), they can also be seen directly in the final frequency response window showing the effects of the process applied. All ARK processors can be configured and monitored in real time by USB or Ethernet.

- The ARK-70 offer atmospheric compensation – essential when working outdoors where temperature and humidity varies considerably between night and day causing noticeable loss in high frequency, especially at long distances. Each output can be configured separately depending on the throw required from each cabinet.

- Other features include advanced security features, polarity, gain and delay on ins and outs, routing of any input to any output and a signal generator with sine and noise (pink or white).

Input	2 or 4 Impedance: 20 K Ohm Balanced (10 K Ohm unbalanced). Connector: Balanced XLR (pin 2 +). AD converter: 24 bit-192KHz, 512x Oversampling. Dynamic Range: 120 dB. Max. level: +19 dBu (balanced).	General	Power supply 85-240 V ~ 40-400 Hz. IEC connector. (Switching power supply, wide range). Consumption 25 W. Operating temperature: -5° to 60° C (23° to 140° F). Storage temperature: -60° to 75° C (-76° to 167° F). Humidity: Max. 90% non-condensing. Dimensions 482 x 45 x 226 mm. Weight 3 Kg Warranty 3 years
Outputs	4, 6 or 8 Impedance: 50 Ohm Balanced (25 Ohm unbalanced). Connector: Balanced XLR (pin 2 +). DA converter: 24 bit-192KHz, 512x Oversampling. Dynamic Range: 120 dB. Max. level: +18 dBu (balanced).	Front Panel	Display: LCD with 24 x 2 characters. Encoders: 1 with push button. Level Meter: Signal and Clip leds per input Signal and Limiting leds per output
Audio	Frequency Range 10 Hz – 24 KHz. THD (%) <0,0018%. DSP Process Internal resolution with 56 bit double precision in floating point. Converters 24 bit resolution. Propagation Delay: 0.6 milliseconds	Level control	Gain +6dBu to -40 dBu per input / output. Mute per input / output. Phase inversion per input / output. Possibility to Link Controls.
Equalisation	Input GEQ, 29Bands 1/3 oct. PEQ output 9 per way. PEQ Type filters Parametric, Shelving High, Shelving Low, Low-Pass, High-Pass, Low-Pass Q variable, High-Pass Q variable, BandPass, Reject Band, AllPass order 1, AllPass order 2. Possibility to Link filters between Input and Outputs.	Security options	Password global. Level 0: No restrictions. Level 1: Only allows preset to changes. Level 2: Only allows mute modification. Level 3: Only allows preset to changes and mute modification. Level 4: Blocks all the front panel controls. Restricted Zones: For each Preset it is possible to disable the access to any processor function (EQ, crossover, Limiter, etc) writing a preset password.
Crossover	Linkwitz Riley with 12, 24, 48 dB/oct. Butterworth and Bessel with 6, 12, 18, 24, 30, 36, 42 and 48 dB/oct.	Communication	USB. Ethernet (optional)
Delay	Input 54 milisec. (channels A & B) Output 20.8 milisec for Speaker alignment. Possibility to Link Delays.	Noise Gate	1 per Output. Noise Threshold: -79dBu to -37dBu.
RMS Limiter-Compressor	1 per output. Threshold: +18dBu to -50dBu. Compression Ratio: 1:1 to 1:10 (1:infinite with limiter). Power indication: Shows the maximum power applied to the speaker for the selected threshold.	Signal Generator	Level 0dBu to -40dBu. Type: sine tone from 10Hz to 22KHz, Pink noise, White noise
Other functions	Process Integration with RAINBOW – The acoustical prediction software. Speaker data import from main audio measurement systems. Export & Import EQ files. Etc.		



Amplifiers



SBA amplifiers

The Subamp series (SBA) has been designed with the aim of offering the proper and more reliable amp to users of very big subwoofers with no concessions. Their output performances (270V/70A) are more than needed to push your subs as far as their maximum limits accept.

With Subamp series you make sure that you will get the maximum output performances of your subwoofers.



HPX amplifiers

The HPX series feature four channel models, ready for rough handling in the touring world.

They are at the forefront of audio design, offering a powerful, reliable and lightweight amplifier designed to deliver superior sound quality for your touring gigs.

HPX-12000 available with DSP.



RS amplifiers

The cost-effective RS Series amplifiers are designed for professionals who demand quality, reliability and value.

RS amplifiers represent the best compromise between economy and performances, taking advantage of latest improvements in electronic assembly.



XT amplifiers

The XT series is a new generation of amplifiers offering high voltage output for high headroom sound, with 64 bit double-precision 96kHz DSP processing, and an advanced power management to squeeze the last watts out of your speakers.

The XT series has digital control with an extra large IPS display and touch screen panel user interface, making it easier and faster to use.



New generation of professional touring amplifiers offering from 4600 to 12000 watts. The HPX series feature four channel models, ready for rough handling in the touring world.

They are at the forefront of audio design, offering a powerful, reliable and lightweight amplifier designed to deliver superior sound quality for your touring gigs.

	HPX-4600	HPX-8800	HPX-6400	HPX-12000 DSP available
Output Power				
@ 2 Ohms	4 x 2260 W	---	4 x 3025 W	---
@ 4 Ohms	4 x 1150 W	4 x 2200 W	4 x 1600 W	4 x 2950 W
@ 8 Ohms	4 x 600 W	4 x 1150 W	4 x 820 W	4 x 1550 W
Bridge @ 4 Ohms	2 x 4520 W	---	2 x 6050 W	---
Bridge @ 8 Ohms	2 x 2300 W	2 x 4400 W	2 x 3200 W	2 x 5900 W
Frequency Response				
Power Bandwidth ± 0.25 dB	20 Hz - 20 KHz	20 Hz - 20 KHz	20 Hz - 20 KHz	20 Hz - 20 KHz
Phase Response				
@ 1 W 20 Hz - 20 KHz	±15 deg	±15 deg	±15 deg	±15 deg
Total Harmonic Distortion				
20 Hz - 20 KHz	<0.05%	<0.05%	<0.05%	<0.05%
Intermodulation Distortion				
SMPTÉ	<0.05%	<0.05%	<0.05%	<0.05%
Damping Factor				
20 - 500 Hz @ 8 Ohms	>500	>500	>500	>500
Crosstalk				
20 Hz - 1 KHz	>80 dB	>80 dB	>80 dB	>80 dB
Voltage Gain	26 dB to 38 dB	26 dB to 38 dB	26 dB to 38 dB	26 dB to 38 dB
Sensitivity				
Rated Power(26/32/38 dB Gain)	3.5/1.7/0.9 V	4.8/2.4/1.2 V	4.1/2/1 V	5.6/2.8/1.4 V
Signal to Noise Ratio				
20 Hz - 20 KHz	112 dB	115 dB	113 dB	116 dB
Required AC Mains				
Operating Voltage (50 Hz - 60 Hz)	170V-265V AC	170V-265V AC	170V-265V AC	170V-265V AC
Power on Idling (@230V)	0.5 A	0.5 A	0.5 A	0.5 A
1/8 Rated Power (@230 min.Z)	11 A	10 A	14 A	13 A
Dimensions				
W x H x D (mm)	483 x 89 x 460	483 x 89 x 460	483 x 89 x 460	483 x 89 x 460
W x H x D (inches)	19 x 3.5 x 18.1	19 x 3.5 x 18.1	19 x 3.5 x 18.1	19 x 3.5 x 18.1
Weight	12 Kg / 26.5 lbs	12 Kg / 26.5 lbs	12 Kg / 26.5 lbs	12 Kg / 26.5 lbs
Protections	Soft-start, Turn-on Turn-off transients, Over-heating, DC, RF, Short-circuit, Open or mismatched loads, ICL™, PMS™ and SSP™. DSP available.			



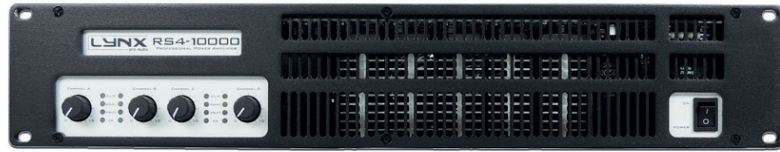
The cost-effective RS Series amplifiers are designed for professionals who demand quality, reliability and value.

RS amplifiers represent the best compromise between economy and performances, taking advantage of latest improvements in electronic assembly.

	RS2-1000	RS2-1500	RS2-2000	RS2-3600
Output Power				
@ 2 Ohms	2 x 500 W	2 x 750 W	2 x 1000 W	2 x 1800 W
@ 4 Ohms	2 x 400 W	2 x 700 W	2 x 1000 W	2 x 1750 W
@ 8 Ohms	2 x 240 W	2 x 450 W	2 x 650 W	2 x 950 W
Bridge @ 4 Ohms	1000 W	1500 W	2000 W	3600 W
Bridge @ 8 Ohms	800 W	1400 W	2000 W	3500 W
Frequency Response				
Power Bandwidth ± 0.25 dB	20 Hz - 20 KHz	20 Hz - 20 KHz	20 Hz - 20 KHz	20 Hz - 20 KHz
Phase Response				
@ 1 W 20 Hz - 20 KHz	±15 deg	±15 deg	±15 deg	±15 deg
Total Harmonic Distortion				
20 Hz - 20 KHz	<0.05%	<0.05%	<0.05%	<0.05%
Intermodulation Distortion				
SMPTE	<0.05%	<0.05%	<0.05%	<0.05%
Damping Factor				
20 - 500 Hz @ 8 Ohms	>500	>500	>500	>500
Crosstalk				
20 Hz - 1 KHz	>75 dB	>75 dB	>75 dB	>75 dB
Voltage Gain	35 dB	35 dB	35 dB	35 dB
Sensitivity				
Rated Power(26/32/38 dB Gain)	0.8 V	1.1 V	1.3 V	1.6 V
Signal to Noise Ratio				
20 Hz - 20 KHz	101 dBA	103 dBA	104 dBA	105 dBA
Required AC Mains				
Operating Voltage (50 Hz - 60 Hz)	170V-265V AC	170V-265V AC	170V-265V AC	170V-265V AC
Power on Idling (@230V)	0.5 A	0.5 A	0.5 A	0.5 A
1/8 Rated Power (@4 Ohm)	3.5 A	4 A	5 A	10 A
Dimensions				
W x H x D (mm)	483 x 88.9 x 254	483 x 88.9 x 254	483 x 88.9 x 254	483 x 88.9 x 254
W x H x D (inches)	19 x 3.5 x 10	19 x 3.5 x 10	19 x 3.5 x 10	19 x 3.5 x 10
Weight	5 Kg / 11 lbs	5 Kg / 11 lbs	5 Kg / 11 lbs	5 Kg / 11 lbs
Protections	Soft-start, Turn-on Turn-off transients, Over-heating, DC, RF, Short-circuit, Open or mismatched loads, ICL™, PMST™ and SSP™			

RS4 Series

Technical Data



The cost-effective RS Series amplifiers are designed for professionals who demand quality, reliability and value.

RS amplifiers represent the best compromise between economy and performances, taking advantage of latest improvements in electronic assembly.

	RS4-2000	RS4-3000	RS4-4000	RS4-6000	RS4-10000
Output Power					
@ 2 Ohms	4 x 500 W	4 x 750 W	4 x 1000 W	4 x 1450 W	4 x 2500 W
@ 4 Ohms	4 x 400 W	4 x 700 W	4 x 1000 W	4 x 1500 W	4 x 2500 W
@ 8 Ohms	4 x 220 W	4 x 450 W	4 x 630 W	4 x 1100 W	4 x 1400 W
Bridge @ 4 Ohms	2 x 1000 W	2 x 1500 W	2 x 2000 W	2 x 2900 W	2 x 5000 W
Bridge @ 8 Ohms	2 x 800 W	2 x 1400 W	2 x 2000 W	2 x 3000 W	2 x 5000 W
70V rms / 100V peak	2 x 900 W	-	4 x 700 W	4 x 1500 W	-
100V rms / 140V peak	-	2 x 1400 W	-	4 x 800 W	-
Frequency Response					
Power Bandwidth ± 0.25 dB	20 Hz - 20 KHz	20 Hz - 20 KHz	20 Hz - 20 KHz	20 Hz - 20 KHz	20 Hz - 20 KHz
Phase Response					
@ 1 W 20 Hz - 20 KHz	±15 deg	±15 deg	±15 deg	±15 deg	±15 deg
Total Harmonic Distortion					
20 Hz - 20 KHz	<0.05%	<0.05%	<0.05%	<0.05%	<0.05%
Intermodulation Distortion SMPTE	<0.05%	<0.05%	<0.05%	<0.05%	<0.05%
Damping Factor					
20 - 500 Hz @ 8 Ohms	>500	>500	>500	>500	>500
Crosstalk					
20 Hz - 1 KHz	>75 dB	>75 dB	>75 dB	>75 dB	>75 dB
Voltage Gain	35 dB	35 dB	35 dB	26 - 40 dB	26 - 40 dB
Sensitivity					
Rated Power (26/32/38 dB Gain)	0.8 V	1.1 V	1.3 V	4.7 V - 0.9 V	5.6 V - 1.1 V
Signal to Noise Ratio					
20 Hz - 20 KHz	101 dBA	103 dBA	104 dBA	106 dB	107.5 dBA
Required AC Mains					
Operating Voltage (50 Hz - 60 Hz)	170V -265V AC / 90V -140V AC	170V -265V AC / 90V -140V AC	170V -265V AC / 90V -140V AC	170V -265V AC / 90V -140V AC	170V -265V AC / 90V -140V AC
Power on Idling (@230V)	0.5 A	0.5 A	0.5 A	0.5 A	0.5 A
1/8 Rated Power (@4 Ohm)	7 A	8 A	10 A	15 A	16 A
Dimensions W x H x D (mm)	483 x 88.9 x 254	483 x 88.9 x 254	483 x 88.9 x 254	483 x 89 x 320	483 x 88.9 x 274
W x H x D (inches)	19 x 3.5 x 10	19 x 3.5 x 10	19 x 3.5 x 10	19 x 3.5 x 12.6	19 x 3.5 x 10.8
Weight	6.5 Kg / 14.3 lbs	6.5 Kg / 14.3 lbs	6.5 Kg / 14.3 lbs	8.5 Kg / 18.7 lbs	8 Kg / 17.6 lbs
Protections	Soft-start, Turn-on Turn-off transients, Over-heating, DC, RF, Short-circuit, Open or mismatched loads, ICL™, PMS™ and SSP™				



The Subamp series (SBA) has been designed with the aim of offering a dedicated, powerful, reliable amp for users of big subwoofers. Their output performance (270V/70A) is more than needed so you can push your subs as far as their maximum limits allow.

These 2-channels devices are based on field proven Quanta Pulse™ Technology with an oversized dual high capacity regulated PFC power supply which delivers full performance independently of mains status. Other features include an oversized high efficiency audio power stage, forced front to back cooling through a component-free path with removable front panel dust filters, improved rugged mechanical design and an even weight distribution.

With the Subamp series you can guarantee maximum output performance for your subwoofers.

	SBA-12000	SBA-18000
Output Power @ 4 Ohms @ 8 Ohms	2 x 6000 W 2 x 3000 W	2 x 9000 W 2 x 4500 W
Frequency Response Power Bandwidth ± 0.25 dB	20 Hz - 20 KHz	20 Hz - 20 KHz
Phase Response @ 1 W 20 Hz - 20 KHz	±15 deg	±15 deg
Total Harmonic Distortion 20 Hz - 20 KHz	<0.05%	<0.05%
Intermodulation Distortion SMPTE	<0.05%	<0.05%
Damping Factor 20 - 500 Hz @ 8 Ohms	>500	>500
Crosstalk 20 Hz - 1 KHz	>80 dB	>80 dB
Voltage Gain	32 / 38 / 44 dB	32 / 38 / 44 dB
Sensitivity Rated Power(26/32/38 dB Gain)	3.9/1.9/1 V	4.7/2.4/1.2 V
Signal to Noise Ratio 20 Hz - 20 KHz	116 dB	118 dB
Required AC Mains Operating Voltage (50 Hz - 60 Hz) Power on Idling (@230V) 1/8 Rated Power (@4 Ohm)	90V-265V AC 0.5 A 14 A	170V-265V AC 0.5 A 16 A
Dimensions W x H x D (mm) W x H x D (inches)	483×88.9×460 19 x 3.5 x 18.1	483×88.9×460 19 x 3.5 x 18.1
Weight	12 Kg / 26.5 lbs	12 Kg / 26.5 lbs
Protections	Soft-start, Turn-on Turn-off transients, Over-heating, DC, RF, Short-circuit, Open or mismatched loads, ICL™, PMS™ and SSP™	



XT series is a new generation of amplifiers that offer a high voltage output, with a powerful 96 KHz and double-precision 64 bits DSP. These amplifiers are ideal for touring and install applications.

Based on a switching mode power supply with an innovative Class H 3 steps topology, these amplifiers work with high voltages and offer superb dynamics. They also include a completely new PMS™ system, with protection both on the power supply and the audio modules, working in real time to make sure all the variables are secure.

All these features make these amplifiers ideal for working with asymmetric loads and provide maximum power for each audio system. XT amplifiers are suitable for the most demanding applications offering the best reliability.

The XT amplifiers have a user interface with an extra-large 4.3" IPS touch panel, making it easier and faster to use. From this panel you can control and manage each parameter of the amplifier and choose among the system presets, users, EQ and created snapshots.

	XT-6K	XT-10K
Number of channels	4	4
Total output power	6000 W	10000 W
Output power @ 8 Ohms	4 x 1100 W 1 x 1200 W	4 x 1600 W 1 x 1800 W
@ 4 Ohms	4 x 1500 W 1 x 1900 W	4 x 2500 W 1 x 3000 W
@ 2 Ohms	4 x 1450 W 1 x 1450 W	4 x 2500 W 1 x 2500 W
@ 8 Ohms Bridged	2 x 3000W	2 x 5000 W
@ 4 Ohms Bridged	2 x 2900 W	2 x 5000 W
Hi-Z 100 V	4 x 800 W	4 x 2500 W
Hi-Z 70 V	4 x 1500 W	2 x 2500 W
Max output voltage	144 V peak	176 V peak
Max output current	38 A peak	50 A peak
Total Harmonic Distortion		<0.05%
Voltage Gain	26 dB to 44 dB (1 dB step)	
SNR	106 dB	107.5 dB
Required AC Mains		
Operating Voltage (50 Hz - 60 Hz)	170V – 265V AC / 90V – 140V AC	170V – 265V AC / 90V – 140V AC
1/8 Rated Power (@230V, 4 Ohms)	15 A	16 A
Dimensions		
W x H x D (mm)	483x89x320	483x89x320
W x H x D (inches)	19 x 3.5 x 12.5	19 x 3.5 x 12.5
Weight	8.5 Kg / 18.7 lbs	8.5 Kg / 18.7 lbs
Protections	Soft-start, Turn-on Turn-off transients, Over-heating, DC, RF, Short-circuit, Open or mismatched loads, ICL™, PMS™ and SSP™	

Software

Prediction, control, DSP updates, management system...all our softwares are designed in-house and are a fundamental part of the Lynx Pro Audio technology. They are designed by and for sound technicians, with a very intuitive interface easy to use.

Masters of DSP technology and one of the few companies in the world that develops its own digital processing systems. This allows us to control all internal processing, from gain to crossover, dynamics, etc.

Online Control System (OCS)



Control and monitoring software for multiple devices (loudspeakers, amplifiers and processors). Allows control via Ethernet / USB for Lynx Pro Audio systems with integrated DSP.

It controls the powered cabinets in real time and obtain detailed information of cabinet behavior.

ARK Software



The ARK software works via USB or Ethernet (cable or wireless) and is the interface to configure all the parameters of the range of processors ARK-70 and ARK-20 series.

The ARK software has been completely designed at the Lynx Pro Audio laboratory by our own engineers. It allows you to configure every one of the parameters in the processor, being in "Real Time" or "Offline", storing them in the processor via the USB interface or ETHERNET.

Cabinet Updater



Connect the cabinet by USB to your PC. The Cabinet Updater software will automatically detects your cabinet hardware and updates the presets to the latest and optimum configuration available.

Rainbow 3D



Rainbow 3D is a new acoustic simulation software in a 3D and dynamic environment. With a sophisticated design, Rainbow 3D stands out for its speed, being able to do a simulation in a few seconds. It has algorithms for beam steering and optimizing the listening area.

Thanks to this software you will be able to "virtually" determine the acoustical response of one or various cabinets at the same time.

Online Control System (OCS)

OCS is our control software, **working in real time for all our digital processing systems**. It is a user interface enabling the set-up of all digital devices in an installation.

With OCS you can configure / monitor all the parameters of a self-powered Lynx Pro Audio system (input levels, cabinet angles, module temperature, compression levels....), all parameters available in our processors and all settings for our HPX amplifiers, **from the input sensitivity to the digital process for each channel independently**. You can change the preset, gain, mute and polarity, activate the weather compensation and the SOLO mode.

OCS enables configuration from one single software system for all devices connected to an Ethernet network and incorporates direct communication with Smart(R) measurement system. **Through our Smart Link we can connect to any of Smart(R) session connected to the local network**. This allows us to see, in real time, the captured measurement directly in our process window.



Control and monitoring software for multiple devices (loudspeakers, amplifiers and processors). Allows control via Ethernet / USB for Lynx Pro Audio systems with integrated DSP.

• Who is it for?

Users of Self powered DSP incorporated Lynx Pro Audio Cabinets where the user has requested the cabinets to be supplied with the Ethernet Module kit.

• What is it for?

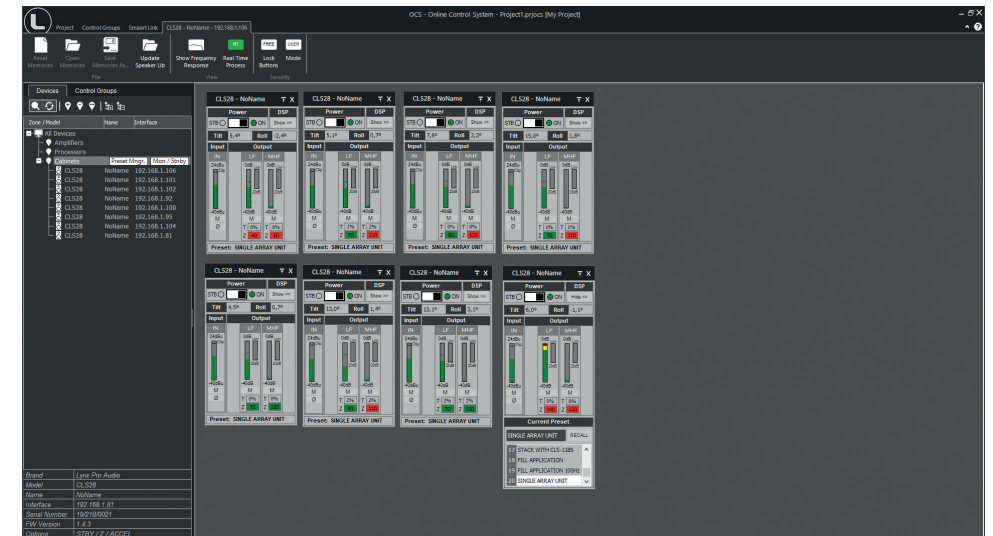
Obtain detailed information of cabinet behaviour and monitor the cabinet/s in real time through the users PC so you can control online a single cabinet or a complete cabinet system from the OCS window. You can apply a Parametric EQ with 6 filters totally configurable, insert a delay up to 90 ms, change the preset, gain, mute, polarity and phase of every cabinet connected. You can also activate the air absorption compensation and select the «SOLO» mode.

• How does it work?

Via Ethernet (cable or wireless). Once installed, the OCS software automatically detects all the cabinets connected to the network and displays them in the OCS window on the users PC.

• What does it show?

As well as displaying the cabinet model and IP address the OCS will be monitoring in real time and the user will be able to view RMS levels, compression and output levels per way, delay, EQ, power module temperature, air absorption compensation and cabinet angulation.

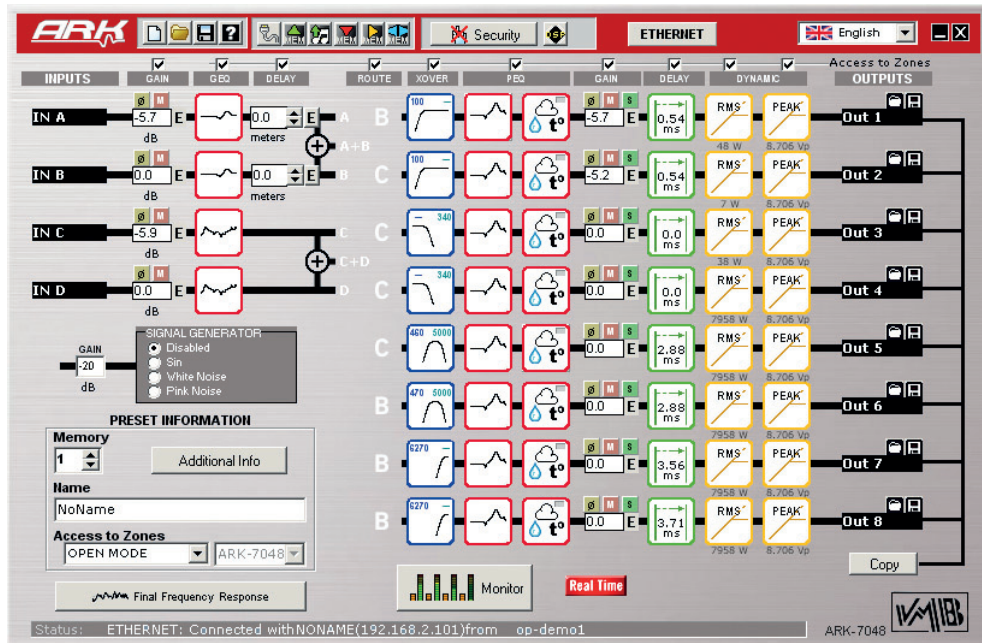


ARK Software

The ARK software works via USB or Ethernet (cable or wireless) and is the interface to configure all the parameters of the range of processors ARK-70 and ARK-20 series.

The ARK software has been completely designed at the Lynx Pro Audio laboratory by our own engineers. It allows you to configure every one of the parameters in the processor, being in "Real Time" or "Offline", storing them in the processor via the USB interface or ETHERNET.

Upon entering in the ARK software, the main screen appears, which represents exactly the internal structure of processing. Here we can see the path that runs the audio signal from the inputs to the outputs in a very easy visual way, showing the different blocks and order of the signal flow. From this main screen you can directly access all settings.



Cabinet Updater

It updates the presets of your powered cabinets. Just connect the cabinet by USB to your PC.

This software will automatically detect your cabinet hardware and update the presets to the latest and optimum configuration available.



Rainbow 3D Acoustical Prediction Software

Lynx Pro Audio's R&D department is working on **Rainbow 3D**, a new acoustic simulation software with dynamic 3D features. With a sophisticated design, Rainbow 3D stands out for its speed, being able to provide a simulation in just a few seconds. It also provides algorithms for beam steering and optimizing the listening area.

Being a technology that has been developed in-house by our own engineers, we are able to adapt to the needs of our clients, make improvements when necessary and develop new tools. Rainbow 3D is a project that is constantly growing and which delivers endless possibilities.

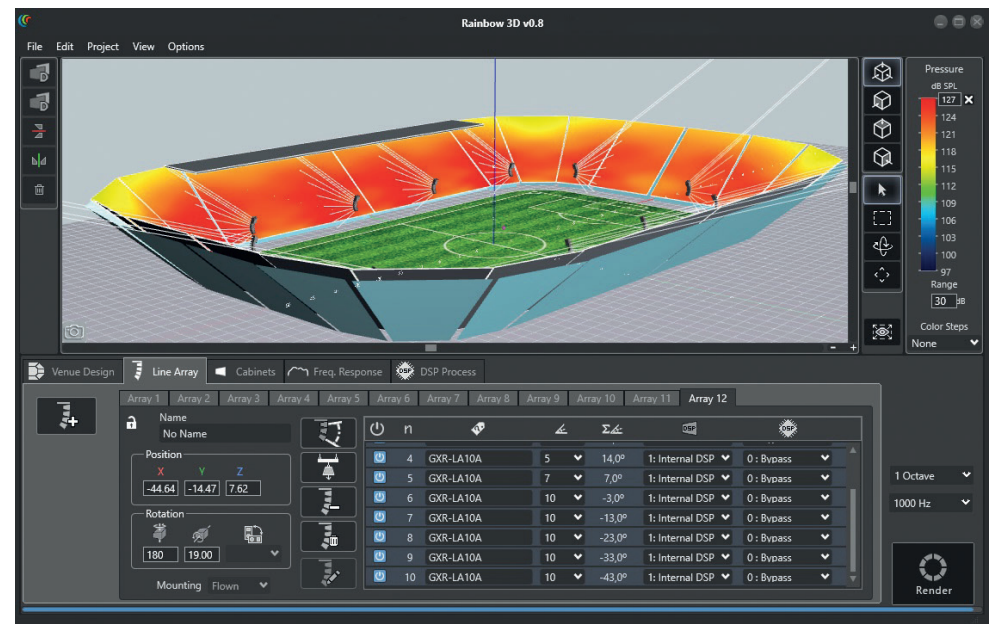
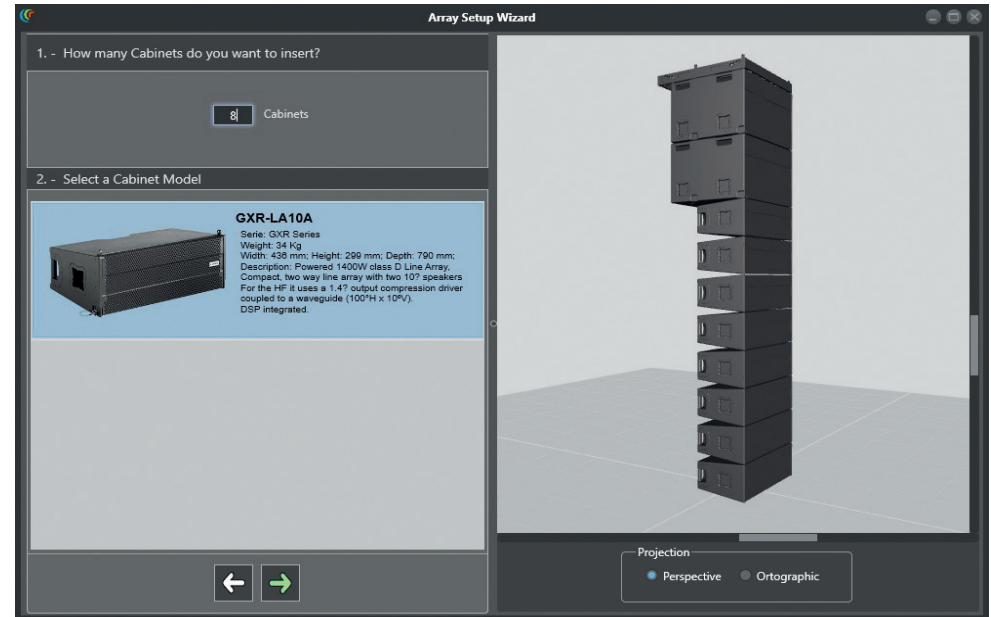


- **Designed from scratch by professionals**

Rainbow 3D has been programmed from scratch by Lynx Pro Audio engineers, using new programming procedures that achieve an effective simulation with really low calculation time.

The program can simulate all Lynx Pro Audio's acoustic enclosures located in a 3D space, including the classic side, top and front views. It can also **define multiple listening zones and includes an unlimited number of sound sources**, allowing simulation for all systems: subwoofers, arrays, columns and individual boxes.

You can also import blueprint images, textures and png format pictures.



• Multiple listening zones

The program can simulate all Lynx Pro Audio's acoustic enclosures located in a 3D space, including the classic side and top views. It can also **define multiple listening zones** and allows **offset positioning and symmetry**.

• Unlimited sound sources

Allows the acoustic simulation for an unlimited number of sound sources and audio systems. **You can place as many systems (subwoofers, line arrays, columns and individual boxes) as you desire.** Also, the line arrays can be placed in stack or flown configuration.

• Beam Steering

Rainbow 3D has the ability to add DSP processing to the simulation and uses algorithms to control the directivity (beam steering) in columns, **without the need to tilt them physically**, being able to divide the column into several beams that point to different zones.

• Accurate optimization thanks to FIR filters

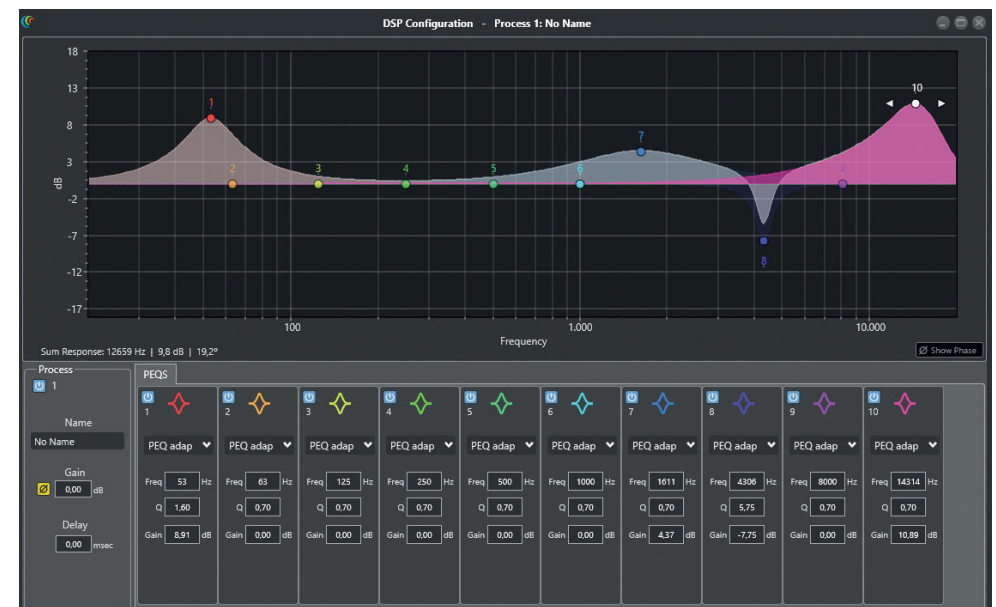
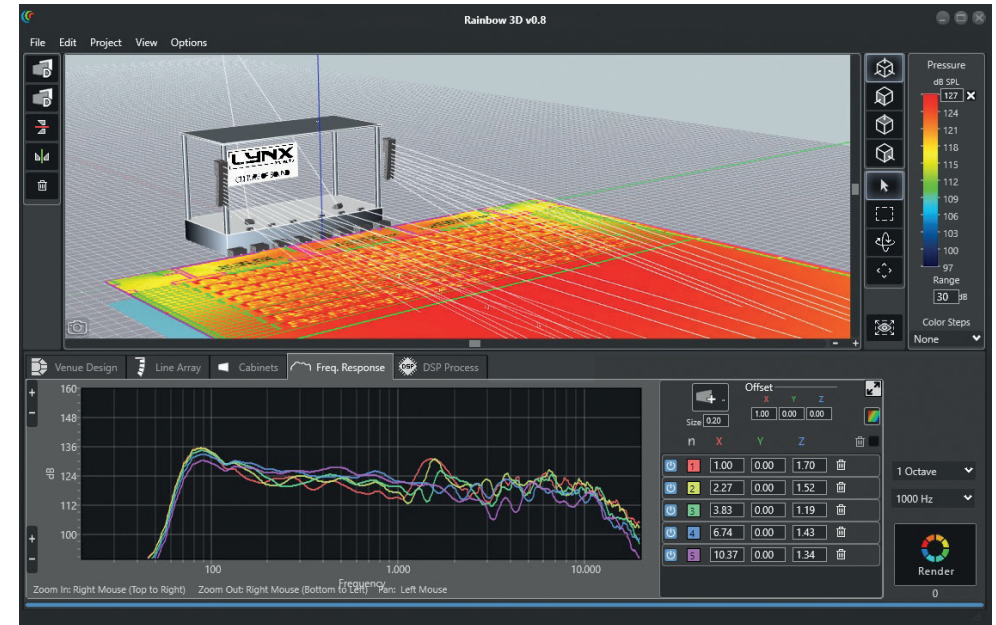
Optimized algorithms are used in the listening area to improve the sound coverage and the frequency response. **This feature can be executed in a matter of seconds.**

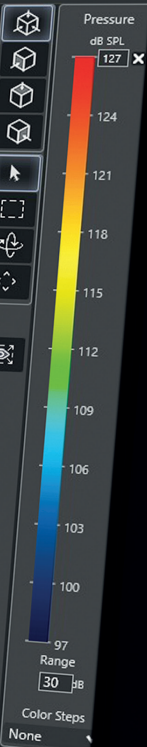
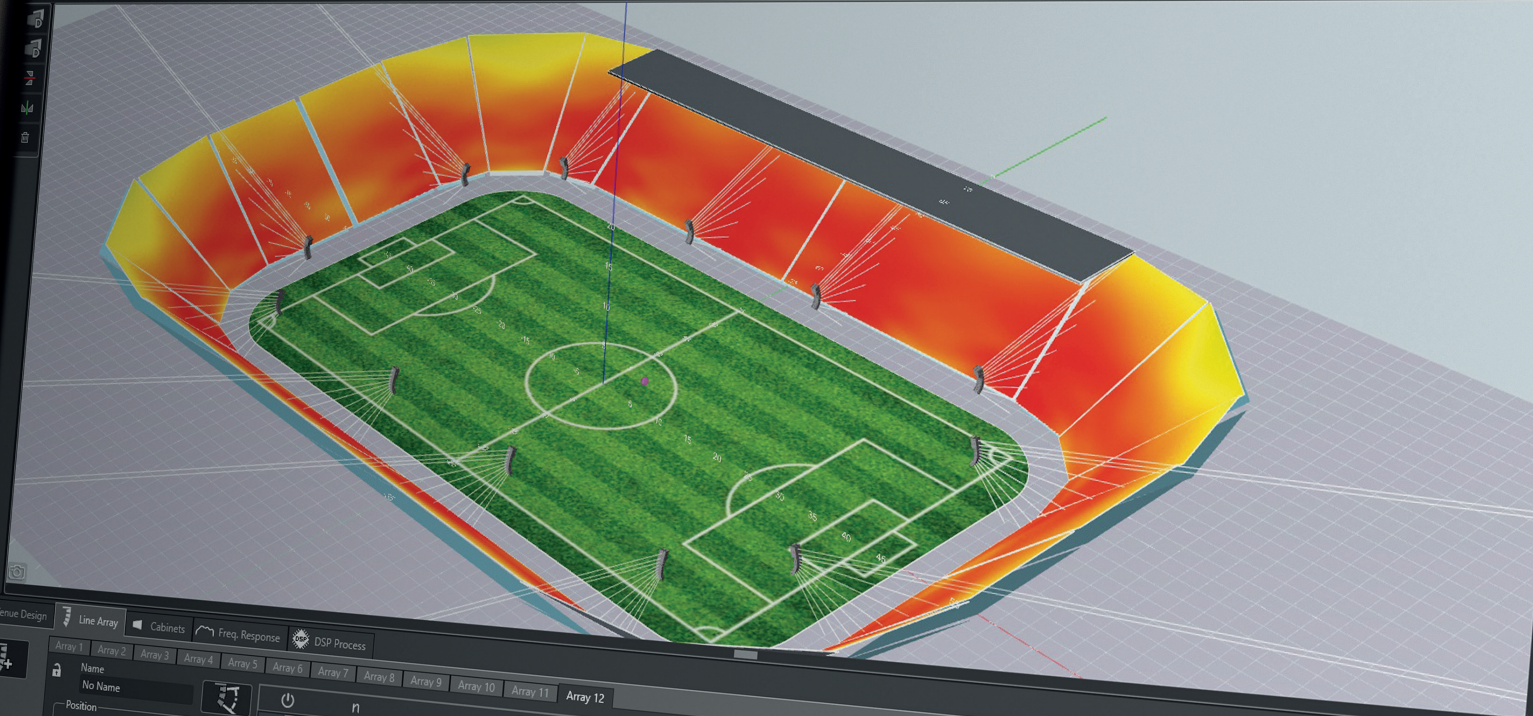
Additionally, the export of FIR coefficients can be performed with the optimization for later loading in the DSP via Ethernet or a USB device. In the near future direct communication with Lynx Pro Audio will be available.

• Multiple measures and tools

Likewise, the R&D department is developing multiple measurement and analysis tools for the calculated data. For example, the **sound pressure curves (SPL) in the listening areas** and the capture of virtual measurements that show the frequency response in the points of location indicated and added.

Among other tools you will find autoplay and a wizard to set up different subwoofer arrangements.





Venue Design

- Line Array
- Cabinets
- Freq. Response
- DSP Process

- Array 1
- Array 2
- Array 3
- Array 4
- Array 5
- Array 6
- Array 7
- Array 8
- Array 9
- Array 10
- Array 11
- Array 12

Name: No Name

Position: X: -44.64, Y: -14.47, Z: 7.62

Rotation: 180, 19.00

Mounting: Flown

n	Model	Gain	Angle	Process	Filter
4	GXR-LA10A			1: Internal DSP	
5	GXR-LA10A	5	14,0°	1: Internal DSP	0: Bypass
6	GXR-LA10A	7	7,0°	1: Internal DSP	0: Bypass
7	GXR-LA10A	10	-3,0°	1: Internal DSP	0: Bypass
8	GXR-LA10A	10	-13,0°	1: Internal DSP	0: Bypass
9	GXR-LA10A	10	-23,0°	1: Internal DSP	0: Bypass
10	GXR-LA10A	10	-33,0°	1: Internal DSP	0: Bypass
10	GXR-LA10A	10	-43,0°	1: Internal DSP	0: Bypass

1 Octave
1000 Hz

Render

Follow us on



or visit our website

www.lynxproaudio.com

Lynx Pro Audio S.L

Calle 1. Pol. Ind. Picassent
Picassent, Valencia
46220 SPAIN

Tel: +34 961 109 601
Mail: info@lynxproaudio.com
Web: www.lynxproaudio.com

