



HR SERIES **CATALOGUE**

Latest edition

Proudly designed, engineered and
manufactured in SPAIN

LYNX
pro-audio

CULTURE OF SOUND

OUR TECHNOLOGY

These are the technological features of our cabinets that you will find on each product card:



DIGITAL PROCESSING

Latest generation 24bit/96Khz digital processor which optimizes the system components.

It includes 2 channel processing electronics with functions for phase correction, driver protection, gain control, equalization, classic crossover and linear phase filtering.



FIR POWERED

In-house engineered FIR filter algorithms allow Lynx systems to deliver outstanding sound quality and phase compatibility within all the DSP powered product range whilst maintaining very low latency.



AES / EBU

For self-powered Lynx Pro Audio cabinets that have this option, enabling digital audio input signal via AES / EBU protocol, accepting signals up to 24 bits and 192 kHz whilst with the software being able to choose if you want to use the input L, R or L + R.



POWER FACTOR CORRECTION

PFC is a measure of how efficiently the load current is being converted into a more useful output current. With PFC the power supply regulates itself when AC mains change, so the amp power output will not change with mains swinging.

This system is also very environmentally friendly with a reduction of approximately 40% of current draw. It transforms the power consumed in to "useful power" producing less hum and distortion.



NEODYMIUM

Lynx Pro Audio cabinets that use neodymium magnet group components benefit from special characteristics such as improved driver performance and of course the saving in overall system weight.



ATMOSPHERIC

Air absorption compensation is an algorithm that compensates for the loss of pressure caused by weather conditions and the distance to the listener's ear from the sound system.

By introducing three parameters (temperature, relative humidity and distance) the algorithm calculates the losses and compensates for this loss so they are not apparent in the listening zone.



DIGITAL INCLINOMETER

Automatic function to calculate cabinet splay angles. The inclinometer data can be viewed and controlled from the cabinet LCD display either manually or automatically.

The inclinometer automatically communicates with the DSP and modifies the equalization algorithms. According to the splay angle of the inclinometer the DSP compensates for atmospheric loss.

The result is a more efficient performance and a flat response, even at long distances.



IMPORT DATA

This feature of our control software allows us to add the electro-acoustic response of the system we want to adjust to our processing chain, enabling us to see the total system response and not just the electrical one.



FLOAT POINT OPERATIONS IN DOUBLE PRECISION

The DSP processing works with double precision, achieving an internal resolution of 56 bits or 64 bits, one of the largest resolutions available on the market today.

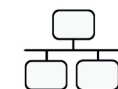
This enables the use of high precision filters with extremely low distortion delivering unbeatable sound clarity and quality.



AMPLIFICATION

The Class D amplifier is characterized by high efficiency (low loss of energy), which results in smaller heat sinks and much smaller total power consumed by reducing the weight and size of the amplifier.

Class D amplifiers achieve about 80% higher efficiency than other amplifiers, whose efficiency is approximately 45%. There are significant advantages, the lower dissipation produces less heat and saves circuit board space.



ETHERNET

This option enables you to connect various devices in a standard Ethernet network and control them remotely through our OCS 'Online Control Software'.



ONLINE CONTROL SYSTEM

OCS is a software to control each cabinet in real time (via Ethernet or pc). It obtains detailed information of the cabinet behaviour: RMS levels, Input clip, compression levels, power module temperature, air absorption compensation and cabinet angulation.



CABINET UPDATER

This software enables you to update your cabinets with the latest presets and firmware. Enclosures are connected via Internet to our servers and automatically detects any updates that might have been made for them. This ensures the end user always has all the improvements developed by our R & D department available for their system.



RAINBOW 3D

Based on polar response measurements, taken meticulously with a 360° sphere in a 3D environment.

The Rainbow 3D software calculates the response from multiple sound sources in a 3D space. In addition, the user can optimize the response using our FIR filtering technology.



HR Series

The HR Series has been designed to offer the utmost sound quality for installations. The range consists of 10 different two-way, full-range and 4 sub-bass options, all delivering high output whilst retaining exceptional clarity, efficiency and guaranteeing lower distortion whilst delivering superior reliability and sonic performance.

All full range models are either bi-amp or passive selectable. For greater flexibility the 12" and 15" full range cabinets are available in 4 different

options depending on the coverage pattern and power required for the installation and for sub-bass reinforcement two different dual 18" are also available.

After considerable testing only the best components have been selected for the HR series. Materials such as hexacone, neodymium, nomex are all employed in our LF/MF drivers to ensure superior performance. The high frequency drivers all use either mylar, titanium

or polyimide each with their own unique benefits and qualities whilst our aluminium horns offer improved compression driver cooling and very low distortion at high pressure levels.

All HR Series cabinets are finished in rugged, premium birch plywood, coated with water-based black paint and protected by front steel grilles all backed with a special dark grey triple layer, acoustical textile which allows greater air flow and reduces heat and humidity.

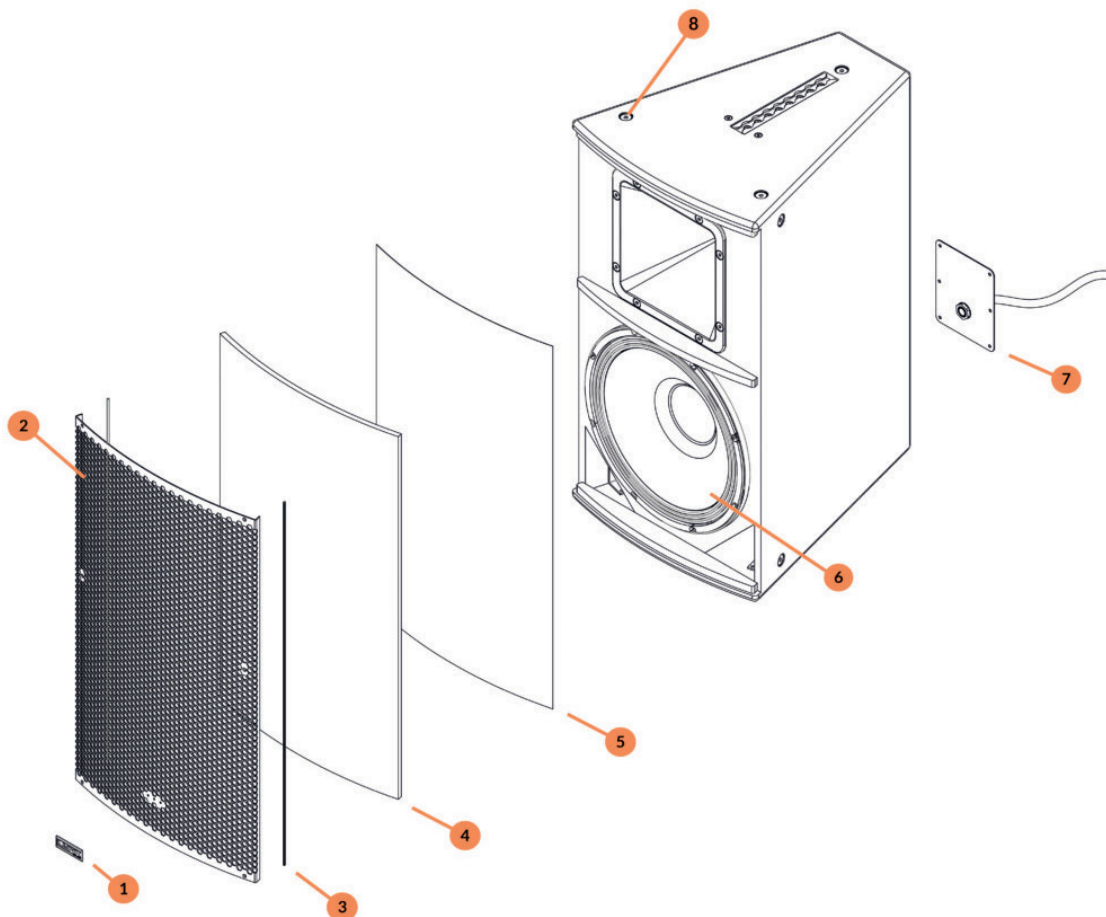
Marine Grade Option

Weather resistant

Our Marine Grade option speakers are designed to withstand harder weather conditions, where the cabinets are exposed to the elements.

The following cabinets are also available for Marine environments, such as cruise ships for example:

- HR-8
- HR-1564/7 & HR-1596/7
- HR-1264/7 & HR-1296/7
- HR-1564/5 & HR-1596/5
- HR-1564/5 & HR-1596/5
- HR-26
- HR-28
- HR-218/36
- HR-218/12
- HR-18/6



Features:

1. Anodized aluminium logo for durability outdoors.
2. Stainless steel 1 mm 316 L grill. Also available in aluminum with protective layer and micro textured paint.
3. Weatherstrip edging for extreme protection.
4. Acoustex filter: hydrophobic polyester sheet to prevent the penetration of water and external elements produced by extreme weather conditions.
5. 35 ppi Acoustic foam to protect against dust particles
6. Waterproof protected cone on both sides
7. Aluminum back plate with pressure gland for an extra tight connection and easy installation.
8. M10 stainless steel 316 L screws (A4).



- Ultra-compact
- Versatile sound reinforcement
- High performance
- 90° x 90° wide dispersion
- ARK processor optimised preset
- Multiple rigging / mounting options

Outdoor version available

Ultra compact, light and very versatile passive enclosure specially designed for all types of installation projects. Consists of a 6.5" transducer (impedance 16 ohm) and a 1" high frequency Mylar tweeter. It offers 119 dB SPL (400 W program).

It is an excellent solution for large installation projects or basic installations. It has a complete range of accessories to provide an easier installation. It is recommended to apply the high performance preset included in the ARK-20 processor.

This series also has the possibility to be manufactured in our **Marine Grade**, ideal for outdoor situations where the cabinets are exposed to the elements.

Applications: club & bar installations, sound reinforcement, theatres, houses of worship, multi media spaces, public address.



HR-6

Components	LF: 1 x 6.5" - 2" voice coil HF: 1 x Tweeter 1" - 1.25" aluminium voice coil, Mylar diaphragm
Frequency Range	62 Hz – 20 KHz (-10dB)
Frequency Response	88 Hz – 18 KHz (± 3dB)
Sensitivity	93 dB (1W@1m)
Max. SPL	116 dB – 122 dB Peak
Coverage	90° H x 90° V
Rated Power (AES)	200 W (400 W program, 800 W peak)
Crossover	Passive
Nominal Impedance	16 Ω
Connectors	2 x Neutrik Speakon NL4MP / 4 x Terminal Block 7.62 mm between pins
Finish	Polyurea coating
Material	15mm Premium birch plywood
Dimensions	300 x 236 x 220 mm (H x W x D)
Weight	7.5 Kg (17 lbs)



- Ultra-compact
- Versatile sound reinforcement
- High performance
- Dispersion 90° x 60° rotatable
- ARK processor optimised preset
- Multiple rigging / mounting options

Marine Grade option available

Passive ultra compact, lightweight and very versatile enclosure especially designed for all types of installation projects. It consists of a 8" transducer with Neodimium magnet and a 1" high frequency compression driver. It offers 125 dB SPL (600 W program).

It is an excellent solution for all types of fixed installations and has a complete range of accessories to provide an easier installation. It is recommended to apply the high performance preset included in the ARK-20 processor.

This series also has the possibility to be manufactured in our **Marine Grade**, ideal for outdoor situations where the cabinets are exposed to the elements.

Applications: club & bar installations, sound reinforcement, theatres, houses of worship, multi media spaces, public address.

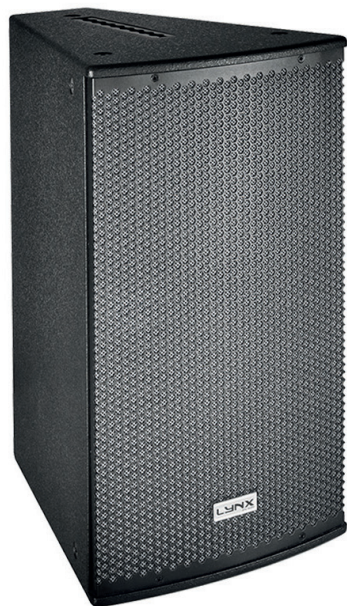


HR-8

Components	LF: 1 x 8" Neodimium – 2" alu voice coil kapton cone HF: 1" Exit compression Driver , 1.75" aluminium voice coil, Polyester diaphragm
Frequency Range	60 Hz – 20 KHz (-10dB)
Frequency Response	78 Hz – 18 KHz (± 3dB)
Sensitivity	97 dB (1W@1m)
Max. SPL	122 dB – 128 dB Peak
Coverage	90° H x 60° rotatable
Rated Power (AES)	300 W (600 W program, 1200 W peak)
Crossover	Passive
Nominal Impedance	8 Ω
Connectors	2 x Neutrik Speakon NL4MP / 4 x Terminal Block 7.62 mm between pins
Finish	Polyurea coating
Material	15mm Premium birch plywood
Dimensions	400 x 274 x 298 mm (H x W x D)
Weight	10 Kg (22 lbs)

HR-1564/7 & HR-1596/7

Technical Data



- Versatile Sound Reinforcement
- High performance
- Coverage 60° x 40° or 90° x 60°, rotatable horns
- Precise band pass directivity control
- ARK processor optimised preset
- Multiple rigging and mounting options

Marine Grade option available

High performance, ultra-compact, full range, two way bi-amp/passive cabinet.

It consists of a 15" transducer and a 1.4" high frequency compression driver. They offer 2 dispersion options. The model HR-1564/7 provides a narrow dispersion of 60° x 40° (rotatable) and the model HR-1596/7 offers a wide dispersion of 90° x 60° (rotatable). 129dB SPL (1400W program).

This series also has the possibility to be manufactured in our **Marine Grade**, ideal for outdoor situations where the cabinets are exposed to the elements.

Applications: club & bar installations, sound reinforcement, theatres, houses of worship, conferences, public address.

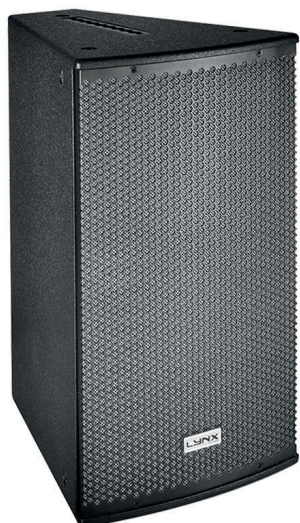


HR-1564/7 & HR-1596/7

Components	LF: 15". 3.5" aluminium voice coil, waterproof front side cone treatment, neodymium magnet HF: 1.4" Exit compression Driver, 2.5" aluminium voice coil, Titanium diaphragm
Frequency Range	58 Hz - 20 KHz (-10dB)
Frequency Response	64 Hz - 18 KHz (± 3dB)
Sensitivity	Passive Mode: 94 dB (1W@1m)
Max. SPL	Passive Mode: 123dB - 129dB Peak Bi-Amp LF: 126dB - 132dB Peak Bi-Amp HF: 127dB - 133dB Peak
Coverage	Constant directivity horn (Rotatable) 90° x 60° (HR-1596/7) 60° x 40° (HR-1564/7)
Rated Power (AES)	Passive: 700 W (1400 W prog, 2800 W peak) Bi- Amp LF: 700 W (1400 W prog, 2800 W peak) Bi-Amp HF: 80 W (160 W program, 320W peak)
Crossover	Bi-Amp / Passive (Selectable)
Nominal Impedance	8 Ω Passive / Biamp LF 8 Ω, HF 8 Ω
Connectors	2 x Neutrik Speakon NL4MP
Finish	Polyurea coating high grade resistant paint
Material	15mm Premium birch plywood
Dimensions	790 x 444 x 541 mm (H x W x D)
Weight	32 Kg (70.5 lbs)

HR-1264/7 & HR-1296/7

Technical Data



- Versatile Sound Reinforcement
- High performance
- Coverage 60° x 40° or 90° x 60°, rotatable horns
- Precise band pass directivity control
- ARK processor optimised preset
- Multiple rigging and mounting options

Marine Grade option available

High performance, ultra-compact, full range, two way bi-amp/passive cabinet.

It consists of a 12" transducer and a 1.4" high frequency compression driver. They offer 2 dispersion options. The model HR-1264/7 provides a narrow dispersion of 60° x 40° (rotatable) and the model HR-1296/7 offers a wide dispersion of 90° x 60° (rotatable). 129dB SPL (1400W program).

This series also has the possibility to be manufactured in our **Marine Grade**, ideal for outdoor situations where the cabinets are exposed to the elements.

Applications: club & bar installations, sound reinforcement, theatres, houses of worship, conferences, public address.

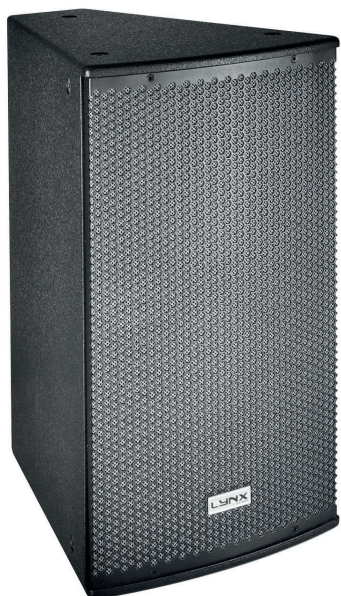


HR-1264/7 & HR-1296/7

Components	LF: 12", 3.5" Aluminium voice coil, waterproof front side cone treatment, neodymium magnet HF: 1.4" Exit compression Driver, 2.5" aluminium voice coil, Titanium diaphragm
Frequency Range	59 Hz - 20 KHz (-10dB)
Frequency Response	65 Hz - 18 KHz (± 3dB)
Sensitivity	Passive Mode: 94 dB (1W@1m)
Max. SPL	Passive Mode: 123dB - 129dB Peak Bi-Amp LF: 125dB - 131dB Peak Bi-Amp HF: 127dB - 133dB Peak
Coverage	Constant directivity horn (Rotatable) 90° x 60° (HR-1296/7) 60° x 40° (HR-1264/7)
Rated Power (AES)	Passive mode: 700 W (1400 W program, 2800 W peak) Bi- Amp LF: 700 W (1400 W program, 2800 W peak) Bi-Amp HF: 80 W (160 W program, 320W peak)
Crossover	Bi-Amp / Passive (Selectable)
Nominal Impedance	8 Ω passive / Biamp. LF 8 Ω HF 8 Ω
Connectors	2 x Neutrik Speakon NL4MP
Finish	Polyurea coating high grade resistant paint
Material	15mm Premium birch plywood
Dimensions	705 x 377 x 495 mm (H x W x D)
Weight	26 Kg (57 lbs)

HR-1564/5 & HR-1596/5

Technical Data



- Versatile Sound Reinforcement
- High performance
- Coverage 60° x 40° or 90° x 60°, rotatable horns
- Precise band pass directivity control
- ARK processor optimised preset
- Multiple rigging and mounting options

Marine Grade option available

High performance, ultra-compact, full range, two way bi-amp/passive cabinet.

It consists of a 15" transducer and a 1" high frequency compression driver. They offer 2 dispersion options. The model HR-1564/5 provides a narrow dispersion of 60° x 40° (rotatable) and the model HR-1596/5 offers a wide dispersion of 90° x 60° (rotatable). 129dB SPL (1000W program).

This series also has the possibility to be manufactured in our **Marine Grade**, ideal for outdoor situations where the cabinets are exposed to the elements.

Applications: club & bar installations, sound reinforcement, theatres, houses of worship, conferences, public address.

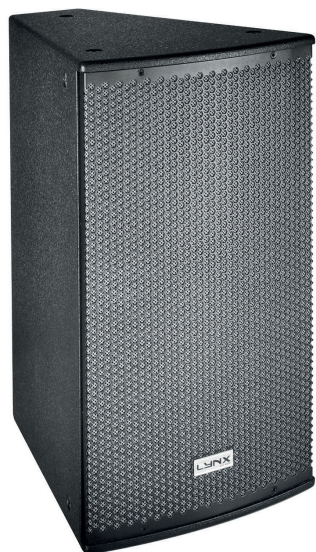


HR-1564/5 & HR-1596/5

Components	LF: 15", 2.5" voice coil, Malt Cross Cooling System HF: 1" Exit compression Driver, 1.75" aluminium voice coil
Frequency Range	58 Hz - 20 KHz (-10dB)
Frequency Response	63 Hz - 18 KHz (± 3dB)
Sensitivity	Passive Mode: 96 dB (1W@1m)
Max. SPL	Passive Mode: 123dB - 129dB Peak Bi-Amp LF: 125dB - 131dB Peak Bi-Amp HF: 126dB - 132dB Peak
Coverage	Constant directivity horn (Rotatable) 90° x 60° (HR-1596/5) 60° x 40° (HR-1564/5)
Rated Power (AES)	Passive: 500 W (1000 W prog, 2000 W peak) Bi- Amp LF: 500 W (1000 W prog, 2000 W peak) Bi-Amp HF: 60 W (120 W program, 240W peak)
Crossover	Bi-Amp / Passive (Selectable)
Nominal Impedance	8 Ω Passive / Biamp LF 8 Ω, HF 8 Ω
Connectors	2 x Neutrik Speakon NL4MP
Finish	Polyurea coating high grade resistant paint
Material	15mm Premium birch plywood
Dimensions	790 x 444 x 541 mm (H x W x D)
Weight	30 Kg (66 lbs)

HR-1264/5 & HR-1296/5

Technical Data



- Versatile Sound Reinforcement
- High performance
- Coverage 60° x 40° or 90° x 60°, rotatable horns
- Precise band pass directivity control
- ARK processor optimised preset
- Multiple rigging and mounting options

Marine Grade option available

High performance, ultra-compact, full range, two way bi-amp/passive cabinet.

It consists of a 12" transducer and a 1" high frequency compression driver. They offer 2 dispersion options. The model HR-1264/5 provides a narrow dispersion of 60° x 40° (rotatable) and the model HR-1296/5 offers a wide dispersion of 90° x 60° (rotatable). 127dB SPL (1000W program).

This series also has the possibility to be manufactured in our **Marine Grade**, ideal for outdoor situations where the cabinets are exposed to the elements.

Applications: club & bar installations, sound reinforcement, theatres, houses of worship, conferences, public address..



HR-1264/5 & HR-1296/5

Components	LF: 12", 2.5" voice coil, Malt Cross Cooling System HF: 1" Exit compression Driver, 1.75" aluminium voice coil
Frequency Range	60 Hz - 20 KHz (-10dB)
Frequency Response	65 Hz - 18 KHz (± 3dB)
Sensitivity	Passive Mode: 94 dB (1W@1m)
Max. SPL	Passive Mode: 121dB - 127dB Peak Bi-Amp LF: 124dB - 130dB Peak Bi-Amp HF: 126dB - 132dB Peak
Coverage	Constant directivity horn (Rotatable) 90° x 60° (HR-1296/5) 60° x 40° (HR-1264/5)
Rated Power (AES)	Passive mode: 500 W (1000 W program, 2000 W peak) Bi- Amp LF: 500 W (1000 W program, 2000 W peak) Bi-Amp HF: 60 W (120 W program, 240W peak)
Crossover	Bi-Amp / Passive (Selectable)
Nominal Impedance	8 Ω passive / Biamp. LF 8 Ω HF 8 Ω
Connectors	2 x Neutrik Speakon NL4MP
Finish	Polyurea coating high grade resistant paint
Material	15mm Premium birch plywood
Dimensions	705 x 377 x 495 mm (H x W x D)
Weight	25 Kg (55 lbs)



- Ultra-compact light weight
- Versatile sound reinforcement
- High performance
- 90° x 60° wide dispersion (rotatable)
- ARK processor optimised preset
- Multiple rigging / mounting options

Marine Grade option available

High performance, ultra-compact, full range, two way bi-amp/passive cabinet.

It consists of two 8" hexacone transducers and a 1" high frequency compression driver. It offers a wide dispersion of 90° x 60° and 126dB SPL (1000W program).

Made with premium birch plywood and finished in polyurea coating.

This series also has the possibility to be manufactured in our **Marine Grade**, ideal for outdoor situations where the cabinets are exposed to the elements.

Applications: club & bar installations, sound reinforcement, theatres, houses of worship, conferences, public address.



HR-28

Components	LF: 2 x 8", 2" aluminium voice coil, hexacone cone HF: 1" Exit compression Driver, 1.75" aluminium voice coil, Polyester diaphragm
Frequency Range	54 Hz - 20 KHz (-10dB)
Frequency Response	60 Hz - 18 KHz (± 3dB)
Sensitivity	Passive Mode: 93 dB (1W@1m)
Max. SPL	Passive Mode: 120dB - 126dB Peak Bi-Amp LF: 120dB - 126dB Peak Bi-Amp HF: 125dB - 131dB Peak
Coverage	90° x 60° (Rotatable)
Rated Power (AES)	Passive: 500 W (1000 W prog, 2000 W peak) Bi- Amp LF: 500 W (1000 W prog, 2000 W peak) Bi-Amp HF: 70 W (140 W program, 280W peak)
Crossover	Bi-Amp / Passive (Selectable)
Nominal Impedance	4 Ω passive / Biamp. LF 4 Ω HF 4 Ω
Connectors	2 x Neutrik Speakon NL4MP
Finish	Polyurea coating high grade resistant paint
Material	15mm Premium birch plywood
Dimensions	665 x 279 x 298 mm (H x W x D)
Weight	17 Kg (37 lbs)



- Ultra-compact light weight
- Versatile sound reinforcement
- High performance
- 90° x 60° wide dispersion (rotatable)
- ARK processor optimised preset
- Multiple rigging / mounting options

Marine Grade option available

High performance, ultra-compact, full range, two way bi-amp/passive cabinet.

.It consists of two 6.5" transducers (at 8ohm impedance) and a 1" high frequency compression driver. It offers a wide dispersion of 90° x 60° and 122dB SPL (800W program).

Made with premium birch plywood and finished in polyurea coating.

This series also has the possibility to be manufactured in our **Marine Grade**, ideal for outdoor situations where the cabinets are exposed to the elements.

Applications: club & bar installations, sound reinforcement, theatres, houses of worship, conferences, public address.



HR-26

Components	LF: 2 x 6.5", 2" voice coil HF: 1" Exit compression Driver , 1.75" aluminium voice coil, PM-4 polymer diaphragm
Frequency Range	72 Hz - 20 KHz (-10dB)
Frequency Response	78 Hz - 18KHz (± 3dB)
Sensitivity	Passive mode: 90 dB (1W@1m)
Max. SPL	Passive mode: 117 dB - 122 dB peak Bi-Amp LF: 119 dB - 125 dB peak Bi-Amp HF: 125 dB - 131 dB peak
Coverage	80° H x 60° V Constant directivity horn
Rated Power (AES)	Passive mode: 400 W (800 W program, 1600 W peak) Bi-Amp LF: 400 W (800 W program, 1600 W peak) B-Amp HF: 70 W (140 W program, 280 W peak)
Crossover	Bi-Amp / Passive (Selectable)
Nominal Impedance	8 Ω - also available in 4 Ω
Connectors	2 x Neutrik Speakon NL4MP
Finish	Polyurea coating high grade resistant paint
Material	15mm Premium birch plywood
Dimensions	249 x 568 x 252 mm (H x W x D)
Weight	15 Kg (33 lbs)

HR-218/36



- Incredible size to power ratio
- Versatile Sound reinforcement
- High performance 3600 W
- ARK processor optimised preset

Marine Grade option available



HR-218/36

Components	2 x 18", 4" tetracoil dual voice coil
Frequency Range	29 Hz - 200 Hz (-10dB)
Frequency Response	34 Hz - 200 Hz (± 3dB)
Sensitivity	103 dB (1W@1m) π
Max. SPL	139 dB / 145 dB Peak
Coverage	Omnidirectional
Rated Power (AES)	3600 W (7200 W program, 1400 W peak)
Crossover	Active
Nominal Impedance	4 Ω
Connectors	2 x Neutrik Speakon NL4MP
Finish	Polyurea coating high grade resistant paint
Material	18mm Premium birch plywood
Dimensions	585 x 1080 x 781 mm (H x W x D)
Weight	82 Kg (180 lbs)

HR-218/12



- Incredible size to power ratio
- Versatile Sound reinforcement
- High performance 1200 W
- ARK processor optimised preset

Marine Grade option available



HR-218/12

Components	2 x 18", 3" copper voice coil
Frequency Range	40 Hz - 200 Hz (-10dB)
Frequency Response	46 Hz - 200 Hz (± 3dB)
Sensitivity	105 dB (1W@1m) π
Max. SPL	136 dB - 142 dB Peak
Coverage	Omnidirectional
Rated Power (AES)	1200 W (2400 W program, 4800 W peak)
Crossover	Active
Nominal Impedance	4 Ω
Connectors	2 x Neutrik Speakon NL4MP
Finish	Polyurea coating high grade resistant paint
Material	18mm Premium birch plywood
Dimensions	585 x 1080 x 624 mm (H x W x D)
Weight	68 Kg (150 lbs)

HR-215S



- Ultra compact triple band-pass
- Very high performance 2000 W
- Versatile sound reinforcement
- ARK processor optimised preset



HR-215S

Components	LF 2 x 15" transducers
Frequency Range	30 Hz – 160 Hz (-10dB)
Frequency Response	35 Hz - 150 Hz (± 3dB)
Sensitivity	100 dB (1W@1m) π
Max. SPL	133 dB / 139 dB Peak
Coverage	Quasi Omnidirectional
Rated Power (AES)	2000 W (4000 W program, 8000 W peak)
Crossover	Active
Nominal Impedance	4 Ω
Connectors	2 x Neutrik Speakon NL4MP
Finish	Polyurea coating high grade resistant paint
Material	18mm Premium birch plywood
Dimensions	644 x 463 x 600 mm (H x W x D)
Weight	59 kg (130 lbs)

HR-18/6



- Incredible size to power ratio
- Versatile Sound reinforcement
- High performance 1200 W program
- ARK processor optimised preset

Marine Grade option available



HR-18/6

Components	1 x 18", 3" copper voice coil
Frequency Range	40 Hz - 200 Hz (-10dB)
Frequency Response	46 Hz - 200 Hz (± 3dB)
Sensitivity	101 dB (1W@1m) π
Max. SPL	129 dB - 135 dB Peak
Coverage	Omnidirectional
Rated Power (AES)	600 W (1200 W program, 2400 W peak)
Crossover	Active
Nominal Impedance	8 Ω
Connectors	2 x Neutrik Speakon NL4MP
Finish	Polyurea coating high grade resistant paint
Material	18mm Premium birch plywood
Dimensions	511 x 505 x 681 mm (H x W x D)
Weight	32 kg (70.5 lbs)



Oh My Club in Madrid, Spain

Situated in the financial district of Madrid with a 1.500m² room that evolves from a restaurant to a nightclub during the night. It's the new trendy spot among celebrities. Installed with HR-28, HR-1264/7 and HR-218/36 cabinets.



More info at www.lynxproaudio.com

Follow us on



or visit our website

www.lynxproaudio.com

Lynx Pro Audio S.L

Calle 1. Pol. Ind. Picassent
Picassent, Valencia
46220 SPAIN

Tel: +34 961 109 601
Mail: info@lynxproaudio.com
Web: www.lynxproaudio.com

