

Ultra-compact, passive column speaker. Consists of 6 x 3" (0.75" voice coil) neodymium transducers. 15° +/- 5° vertical coverage. 119dB SPL. Suitable for outdoors.



Key features

- Compact & versatile
- Powered from the sub unit
- DSP presets for wide applications
- Weather proof components
- Easy to use, easy to install
- Portable
- Available in black or white

Applications

- PA system
- Clubs & theatres
- Houses of worship
- Solo artists, band, DJ
- Public address
- Commercial complex

General description & specifications

The Ionic-50/OD is a passive column speaker part of the Ionic series. The Ionic cabinets are compact, modular and powerful and the complete series include two sub units and two column models.

The Ionic-50/OD uses 6 x 3" (0.75" voice coil) neodymium transducers offering a coverage of 15° +/- 5° V x 100° H and 119dB SPL.

The Ionic-50/OD is the ideal column speaker for outdoor installations. The cabinets receive the following treatment so that they can be installed in outside locations: micro perforated

aluminium grill with special polyester protection against water, tropicalized speaker treatment with special latex covering and double cabinet sealing.

Weight has been left as low as possible providing easy set ups in fixed installation as well as easy transport for portable applications.

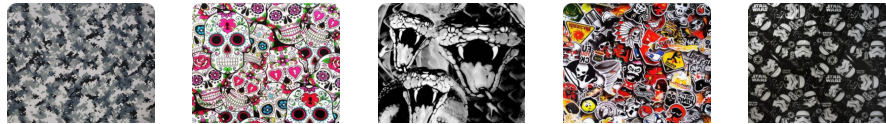
The Ionic-50/OD is powered from the subwoofer units which include a Digital Signal Processor offering different presets to cover a wide range of sound applications.

Technical Data

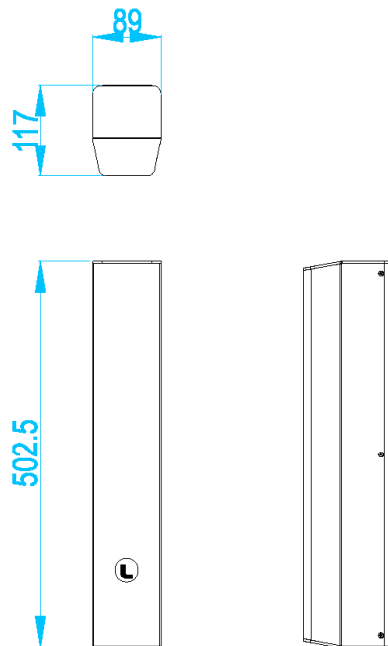
Components	6 x 3" speaker with 0.75" voice coil
Frequency range	150 Hz - 20 KHz (-10dB)
Frequency response	180 Hz - 18 KHz (± 3dB)
Sensitivity	97 dB (1W@1m)
Max SPL	119 dB / 125 dB peak
Coverage	15° ± 5° V x 100° H
Power	150 W AES (300 W program, 600 W peak)
Nominal Impedance	32 Ω
Connectors	2 x NEUTRIK Speakon NL4
Finish	Epoxy paint / bespoke pattern
Material	1.5 mm stainless steel
Dimensions	502 x 89 x 117 mm (H x W x D)
Weight	7 Kg (15 lbs)

RAL colours and water-vinyl customization

Available in RAL colours by request. In addition, more customization options for the Ionic 100/OD and Ionic 50/OD cabinets are available. These are some patterns and designs in water-vinyl:



Dimensional Drawing



Accessories

	SV-22	Piece to connect 2 columns together – Straight
	SV-23	Piece to connect columns to wall or truss
	SV-POLE	35mm inclinable Pole adaptor
	SV-I2S	Sub adaptor for satellite
	SV-21	Column cabinets connection
	WB-120	Wall bracket for column installation – inclinable
	FC-IONIC	Flight case for 4 ionic-50/OD plus accessories